

CALIPER BOREHOLE VOLUME

Job No. 16857
 Company U.S. GEOLOGICAL SURVEY
 Well SDSE
 Field SOLANA BEACH
 County SAN DIEGO State CA

Location: GPS: N300 500.529' W1170 15.726'
 Sec. Twp. Rge.
 Other Services: ELOG GRILL3 DUAL INDUCTION SNC/VDL

Permanent Datum	G.L.	Elevation	Elevation
Log Measured From	G.L.	above perm. datum	K.B. D.F. G.L.
Drilling Measured From	G.L.		
Date	10/24/2012		
Run Number	ONE		
Depth Driller	1185'		
Depth Logger	1184'		
Bottom Logged Interval	1184'		
Top Log Interval	0'		
Casing Driller	N/A		
Casing Logger	N/A		
Bit Size	8.75" 0-600'	7.875" 600'-1185'	
Type Fluid in Hole	BENTONITE		
Density / Viscosity	N/A		
pH / Fluid Loss	N/A		
Source of Sample	PIT		
Rm @ Meas. Temp	1.6 @ 77F		
Rmf @ Meas. Temp	1.8 @ 77F		
Rmc @ Meas. Temp	N/A		
Source of Rmf / Rmc	MEASURE		
Rm @ BHT	N/A		
Time Circulation Stopped	17:15		
Time Logger on Bottom	19:50		
Max. Recorded Temperature	N/A		
Equipment Number	PS-4		
Location	L.A.		
Recorded By	ABREAU		
Witnessed By	A. KIOS		

<<< Fold Here >>>

All interpretations are opinions based on inferences from electrical or other measurements and we cannot and do not guarantee the accuracy or correctness of any interpretation, and we shall not, except in the case of gross or willful negligence on our part, be liable or responsible for any loss, costs, damages, or expenses incurred or sustained by anyone resulting from any interpretation made by any of our officers, agents or employees. These interpretations are also subject to our general terms and conditions set out in our current Price Schedule.

Comments

Calibration Report

Database File 16857.db
 Dataset Pathname CAL
 Dataset Creation Wed Oct 24 23:19:57 2012

Temperature Calibration Report

Serial Number: PS-4_Short
 Tool Model: Short_GPH
 Performed: Fri Oct 19 11:29:02 2012

	Reference		Reading
Low Reference:	4.00	degF	300.21 cps
High Reference:	7.00	degF	889.23 cps
Gain:	0.01		
Offset:	2.47		
Delta Spacing	1		

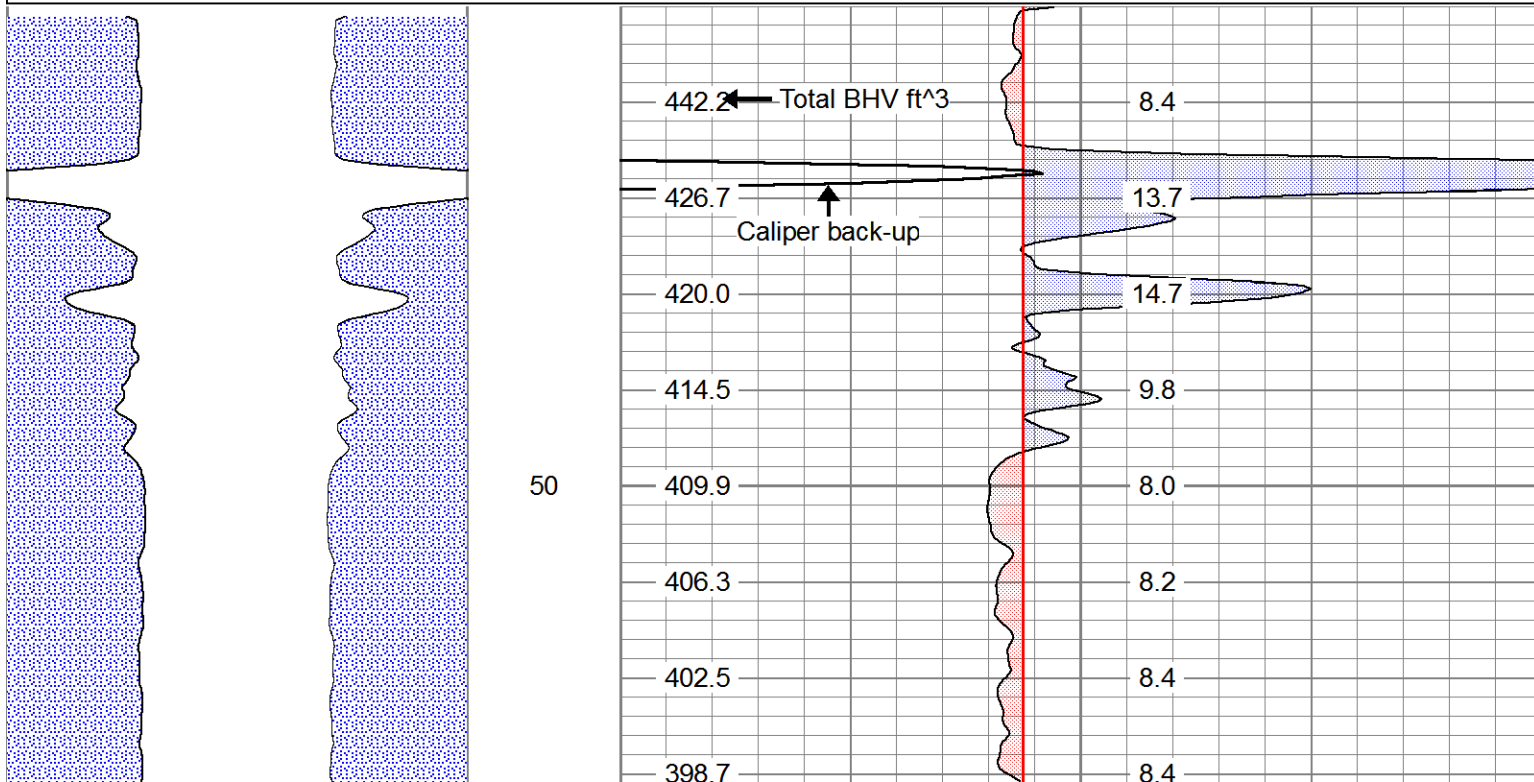
XY Caliper Calibration Report

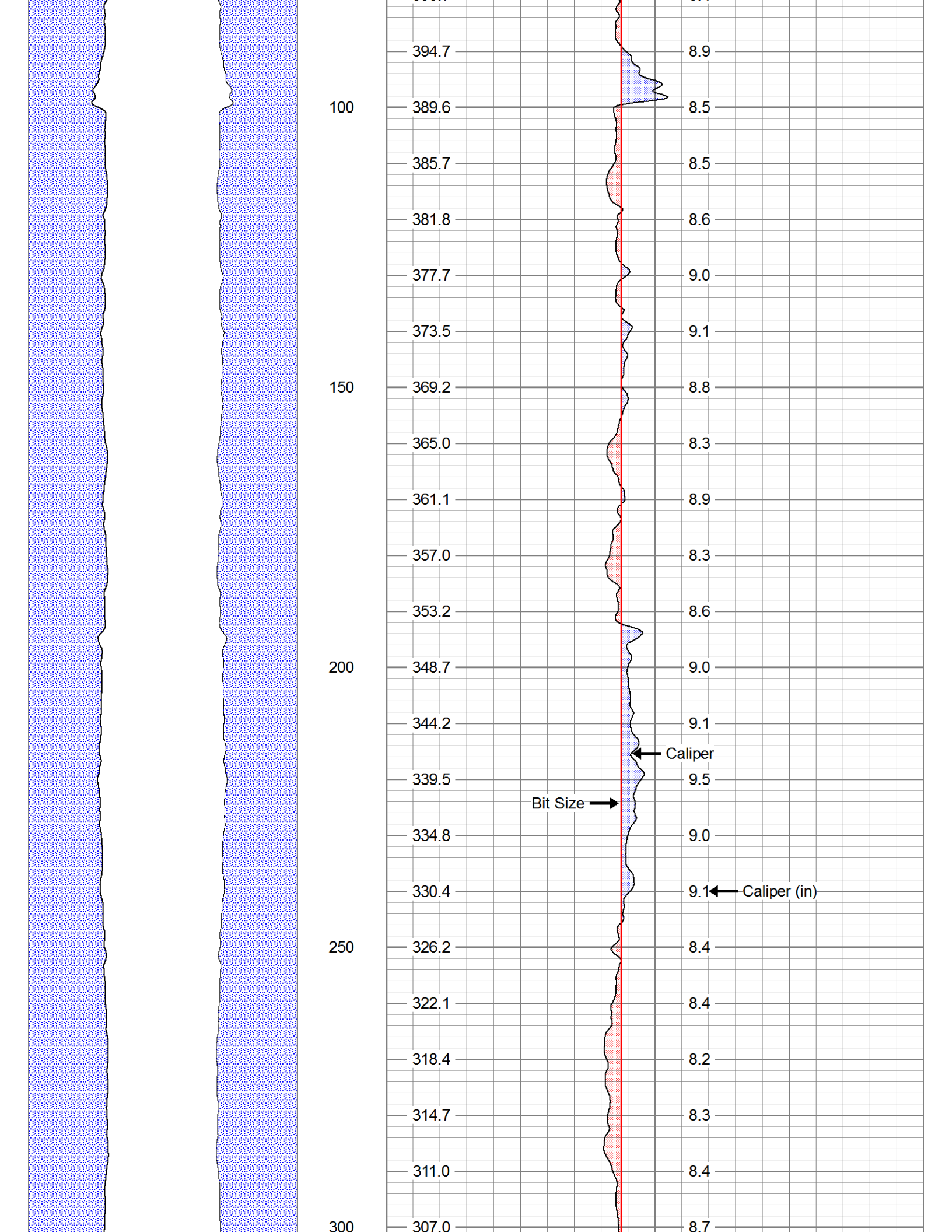
Serial Number/Model: Short-Comprobe
 Performed: Fri Oct 19 11:27:29 2012

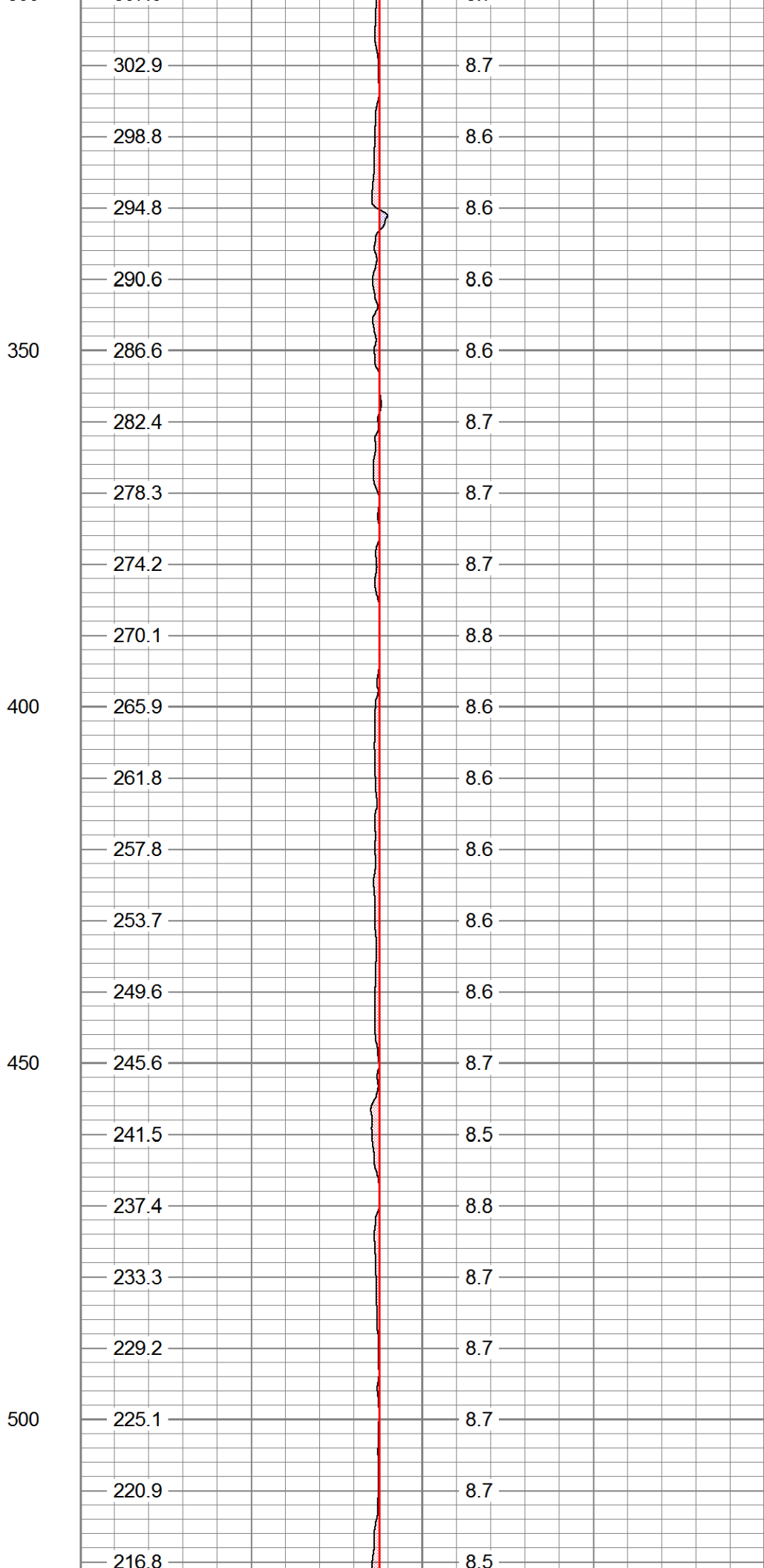
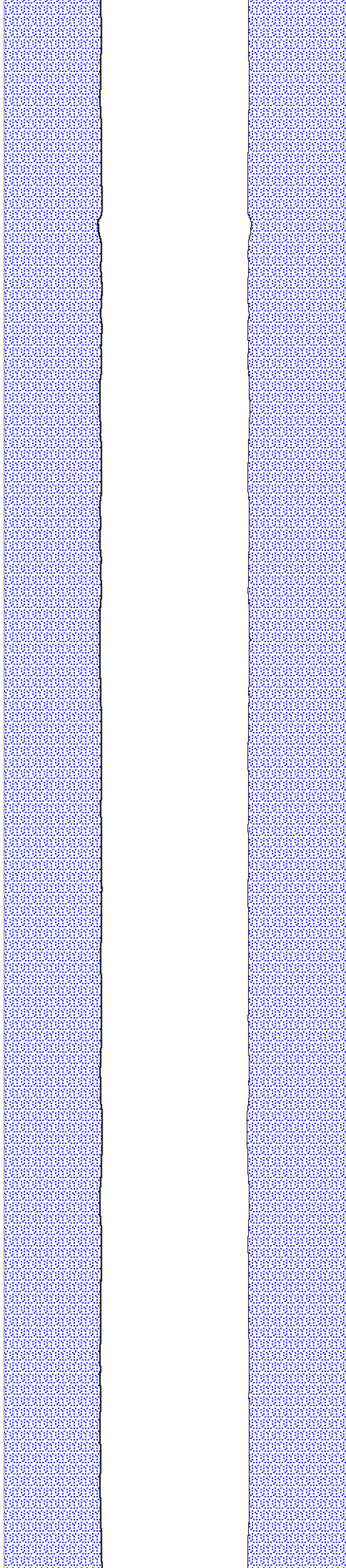
	Ring		X Caliper		Y Caliper
1:	6	in	91.321	cps	91.321 cps
2:	8	in	300.207	cps	300.207 cps
3:	10	in	511.705	cps	511.705 cps
4:	14	in	889.226	cps	889.226 cps
5:	18	in	1289.6	cps	1289.6 cps
6:	22	in	1688.87	cps	1688.87 cps

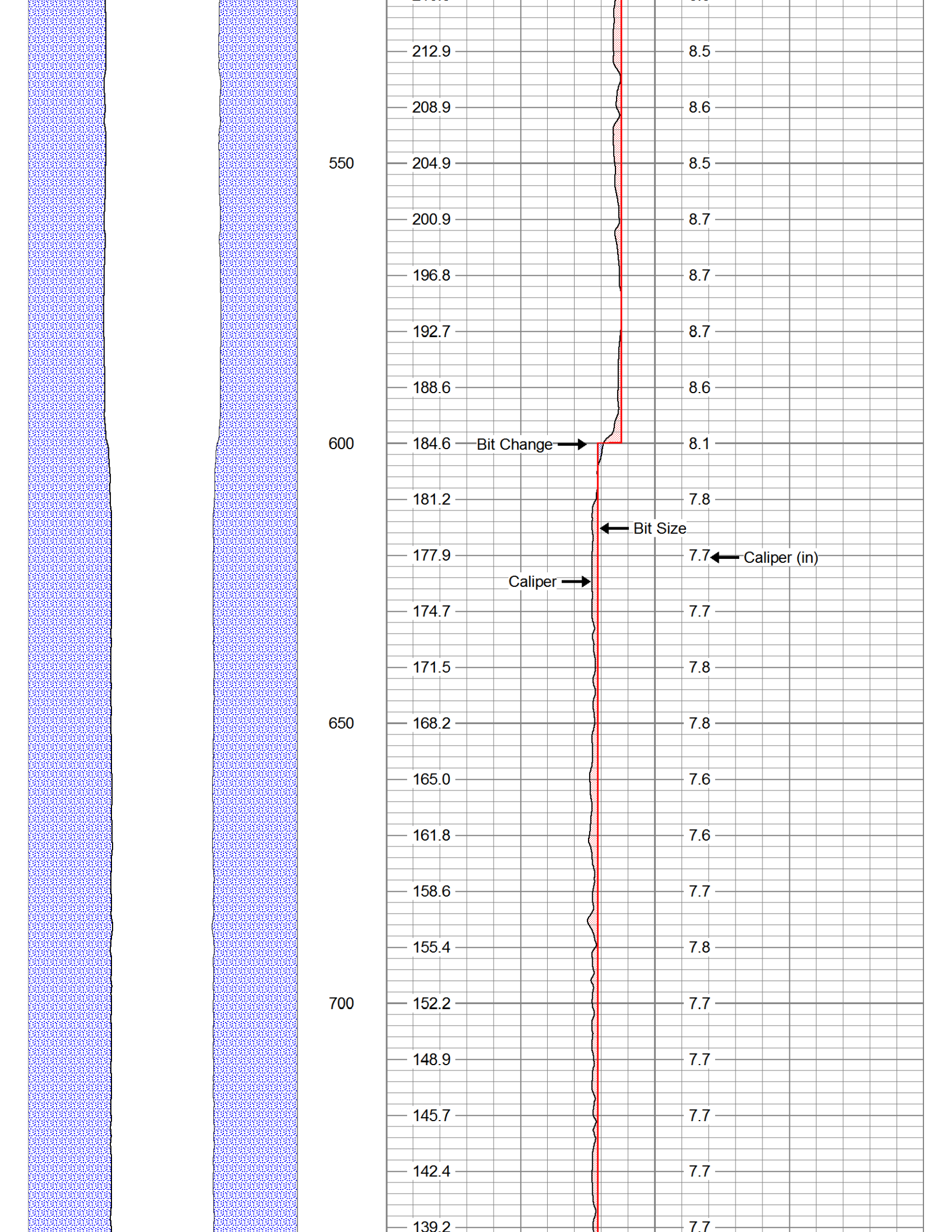
Database File 16857.db
 Dataset Pathname CAL
 Presentation Format xyc_gph
 Dataset Creation Wed Oct 24 23:19:57 2012
 Charted by Depth in Feet scaled 1:240

CSG SCHEDULE	0	Caliper (in)	20
Pipe(s) proportional to Hole Size	0	Bit Size (in)	20
	20	Caliper back-up (in)	40
total BHV ft ³ (ft3)		Caliper (in)	









550

600

650

700

212.9

208.9

204.9

200.9

196.8

192.7

188.6

184.6

181.2

177.9

174.7

171.5

168.2

165.0

161.8

158.6

155.4

152.2

148.9

145.7

142.4

139.2

8.5

8.6

8.5

8.7

8.7

8.7

8.6

8.1

7.8

7.7

7.7

7.8

7.8

7.6

7.6

7.7

7.8

7.7

7.7

7.7

7.7

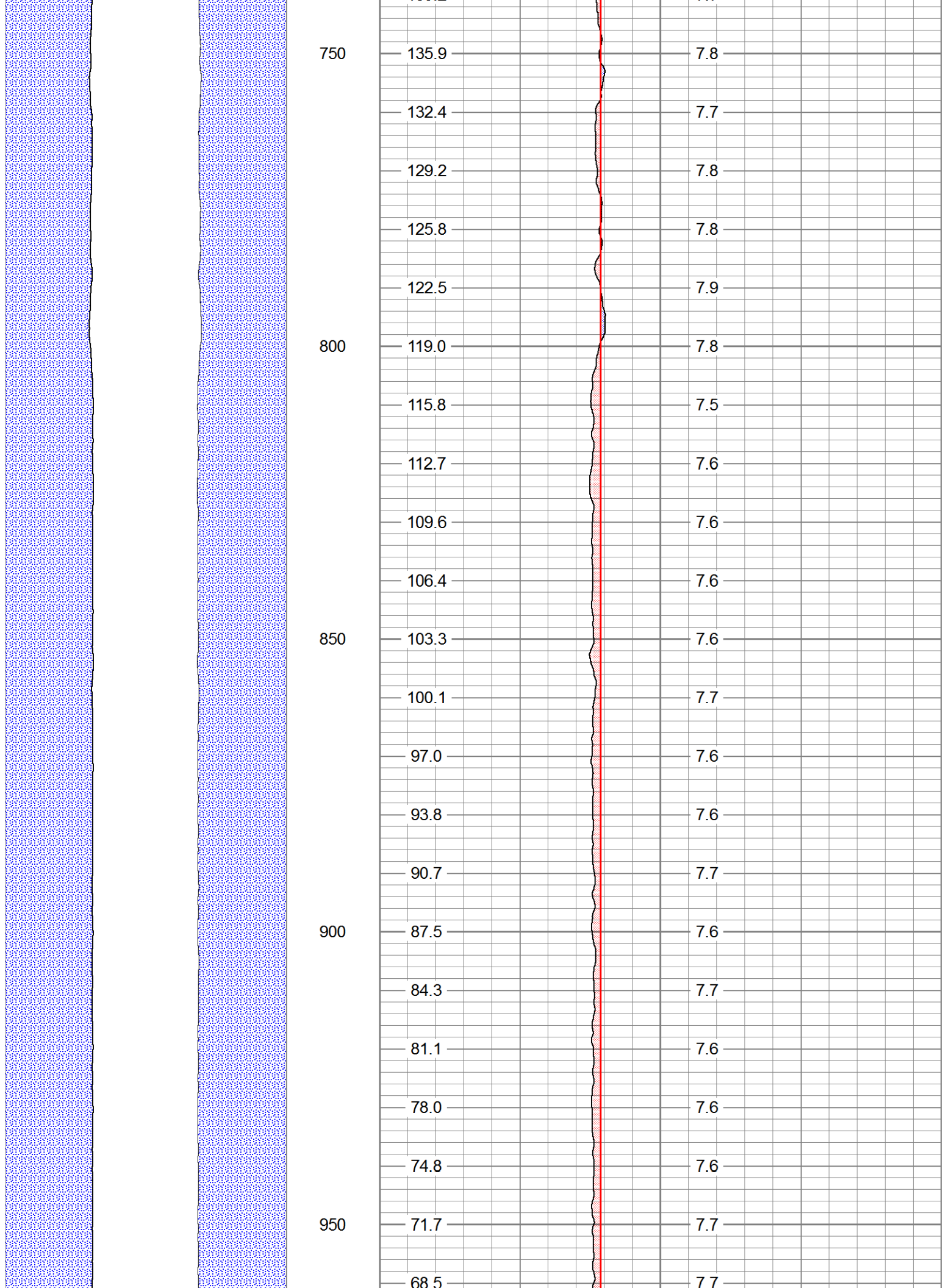
7.7

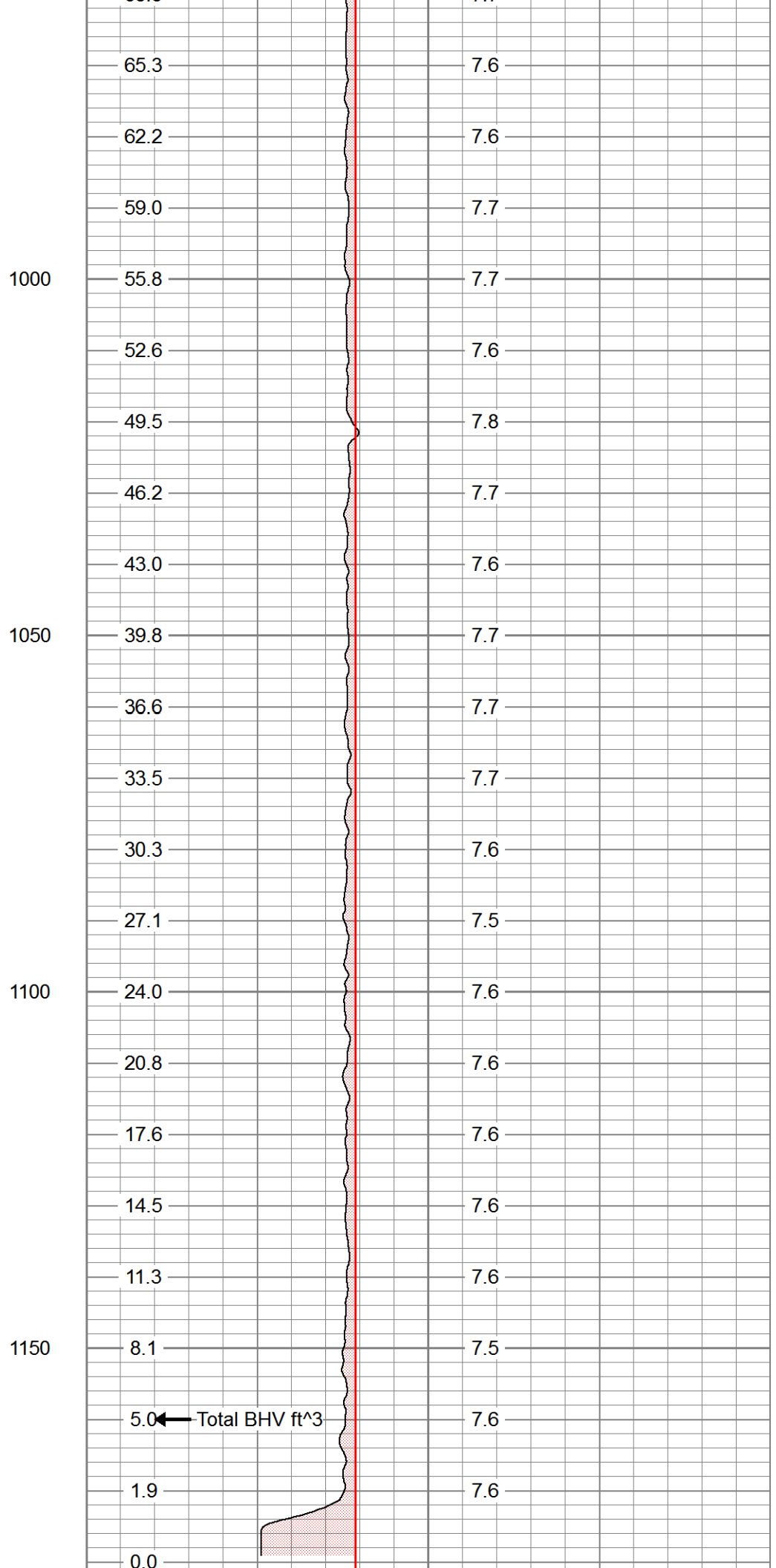
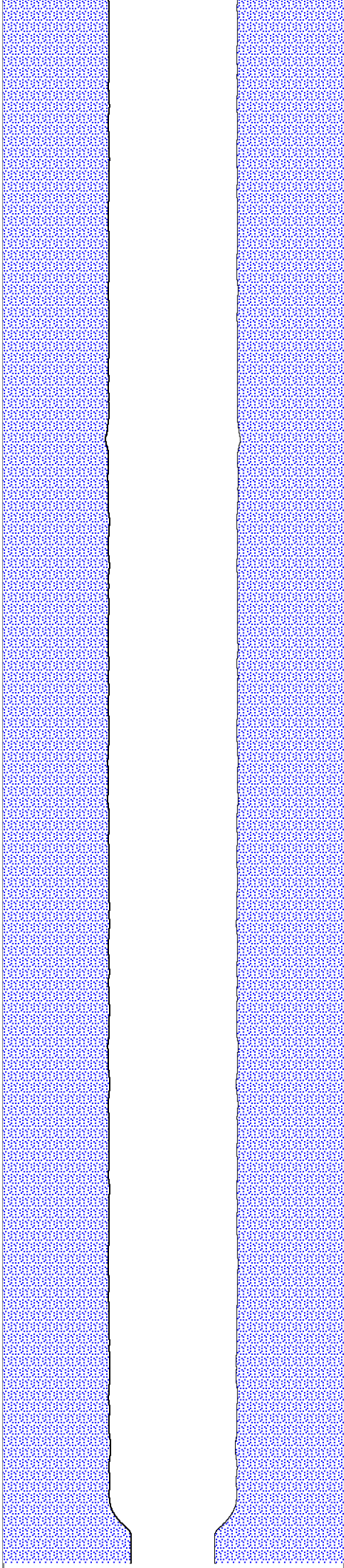
Bit Change →

← Bit Size

← Caliper (in)

Caliper →





CSG SCHEDULE Pipe(s) proportional to Hole Size	0	Caliper (in)	20
	0	Bit Size (in)	20
	20	Caliper back-up (in)	40
	total BHV ft^3 (ft3)	Caliper (in)	