

Job No. 16857
 Company U.S. GEOLOGICAL SURVEY
 Well SDSE
 Field SOLANA BEACH
 County SAN DIEGO State CA

Location:
 GPS: N300 500.529' W1170 15.726'
 Sec. Twp. Rge.
 Other Services:
 ELOG
 GRILL3
 CALIPER
 SNCVDL

Permanent Datum	G.L.	Elevation	25'	Elevation
Log Measured From	G.L.	above perm. datum		K.B. D.F. G.L.
Drilling Measured From	G.L.			
Date	10/24/2012			
Run Number	ONE			
Depth Driller	1185'			
Depth Logger	1184'			
Bottom Logged Interval	1184'			
Top Log Interval	0'			
Casing Driller	N/A			
Casing Logger	N/A			
Bit Size	8.75" 0-600'	7.875"	600'-1185'	
Type Fluid in Hole	BENTONITE			
Density / Viscosity	N/A			
pH / Fluid Loss	N/A			
Source of Sample	PIT			
Rm @ Meas. Temp	1.6 @ 77F			
Rmf @ Meas. Temp	1.8 @ 77F			
Rmc @ Meas. Temp	N/A			
Source of Rmf / Rmc	MEASURE			
Rm @ BHT	N/A			
Time Circulation Stopped	17:15			
Time Logger on Bottom	19:50			
Max. Recorded Temperature	N/A			
Equipment Number	PS-4			
Location	L.A.			
Recorded By	ABREAU			
Witnessed By	A. KJOS			

<<< Fold Here >>>

All interpretations are opinions based on inferences from electrical or other measurements and we cannot and do not guarantee the accuracy or correctness of any interpretation, and we shall not, except in the case of gross or willful negligence on our part, be liable or responsible for any loss, costs, damages, or expenses incurred or sustained by anyone resulting from any interpretation made by any of our officers, agents or employees. These interpretations are also subject to our general terms and conditions set out in our current Price Schedule.

Comments

Calibration Report

Database File 16857.db
 Dataset Pathname DIL
 Dataset Creation Wed Oct 24 22:31:27 2012

Serial-Model:
Surface Cal Performed:

0001-ALT

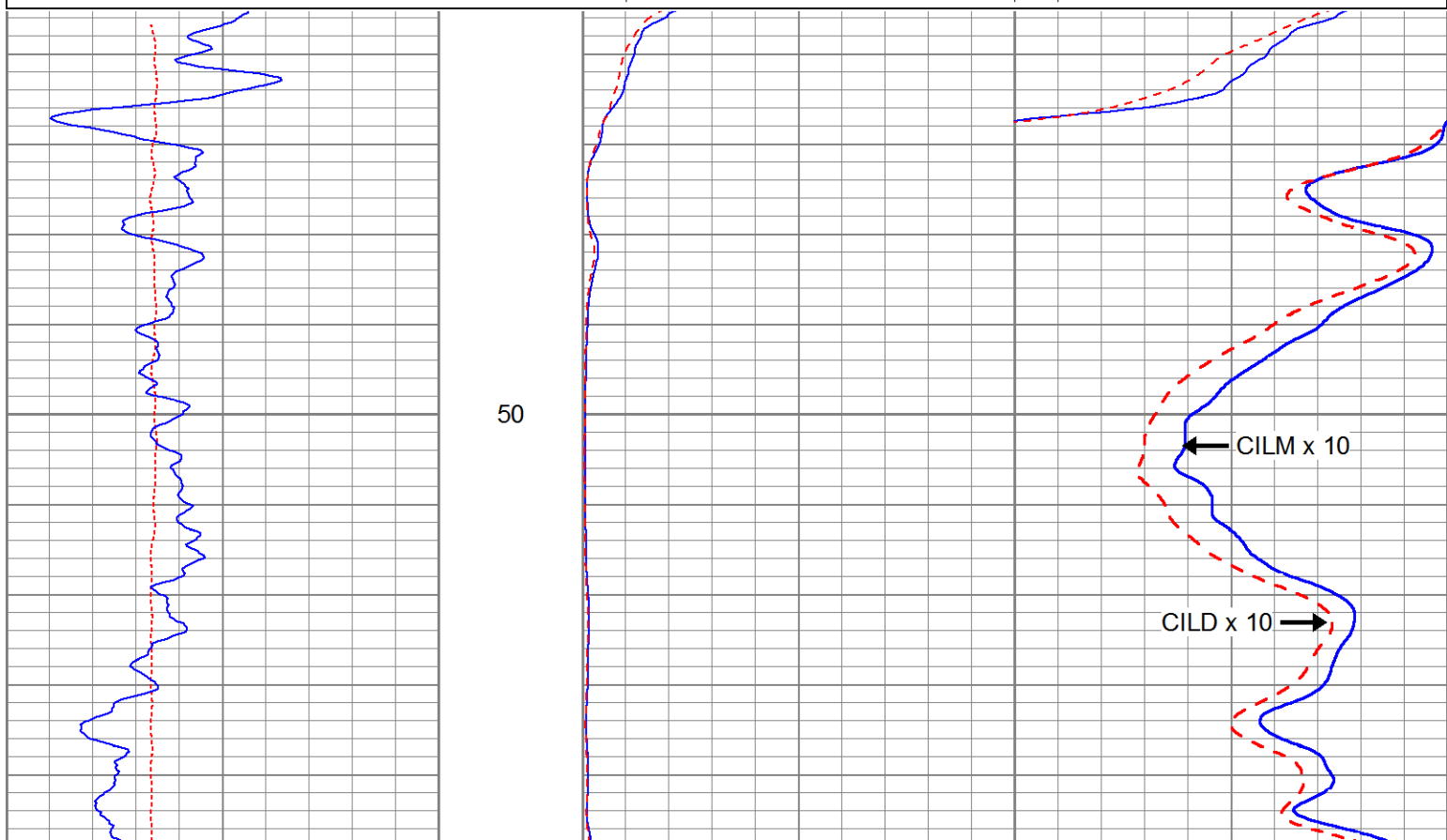
Loop:	Readings			References			Results	
	Air	Loop		Air	Loop		m	b
Deep	1405.700	3341.300	cps	0.000	612.000	mmho/m	0.316	-444.456
Medium	2031.390	14784.400	cps	0.000	1960.000	mmho/m	0.154	-312.201

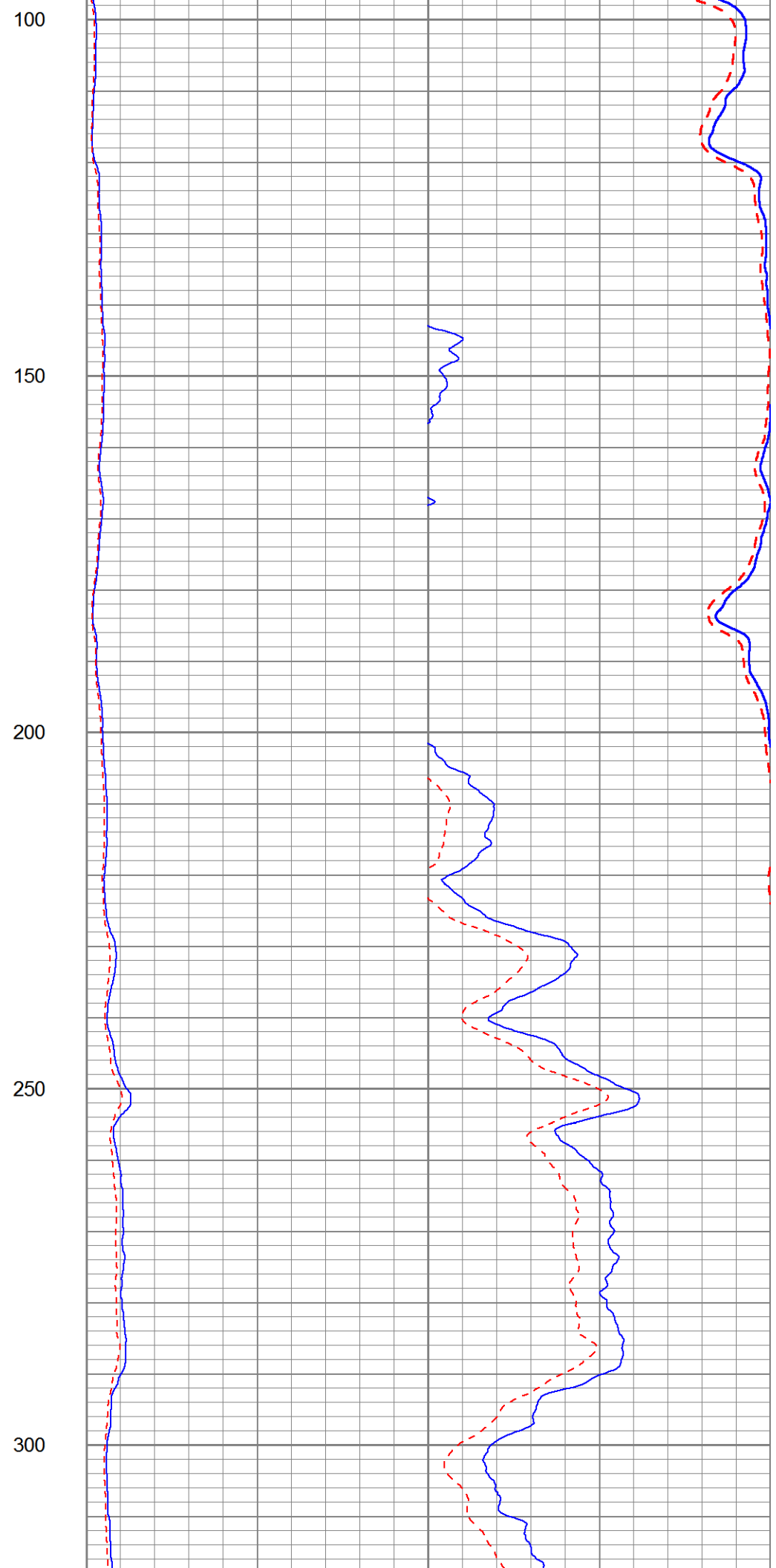
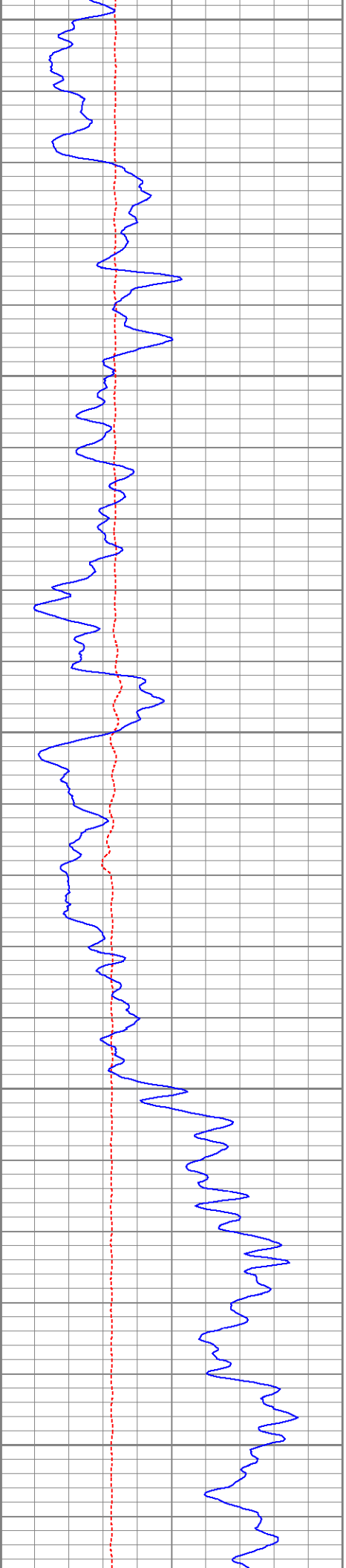
Gamma Ray Calibration Report

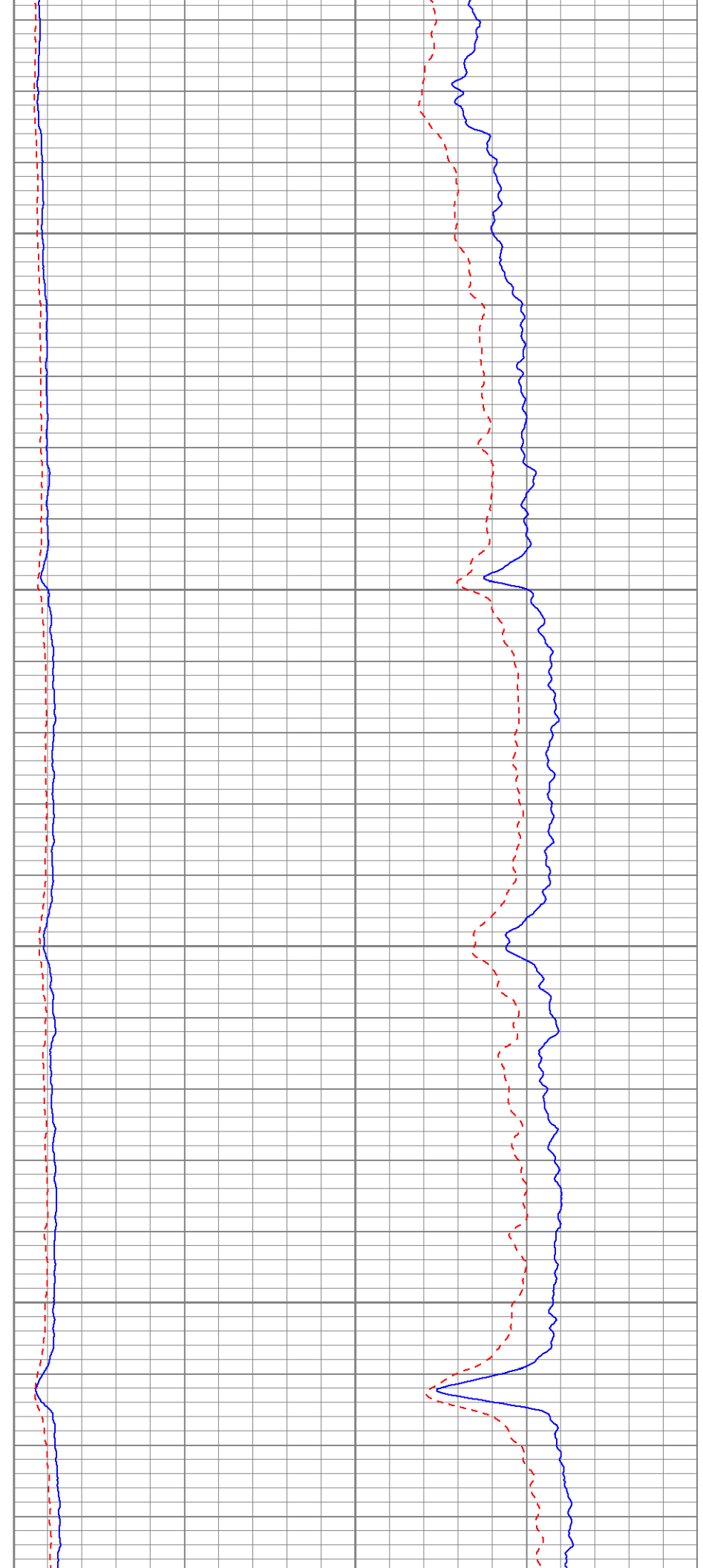
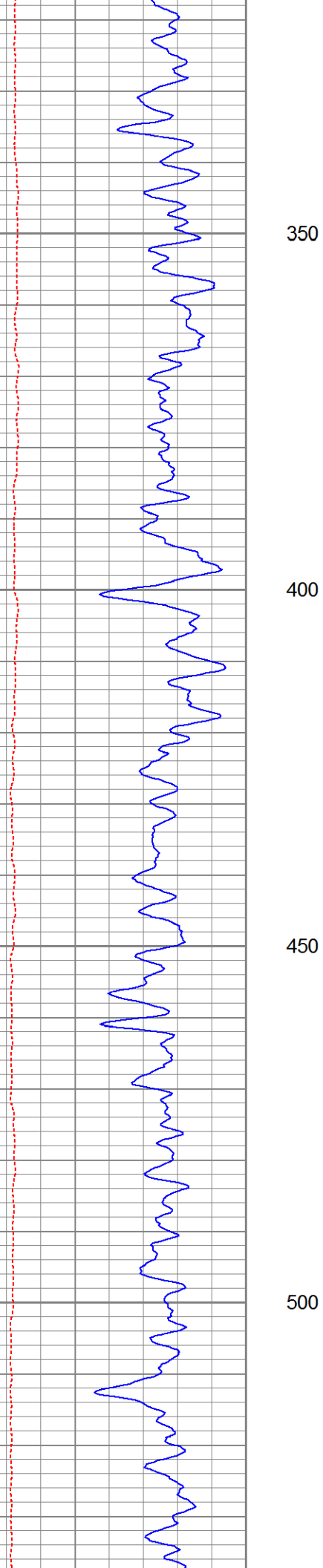
Serial Number:	PS_1	
Tool Model:	01	
Performed:	Fri Oct 19 12:30:23 2012	
Calibrator Value:	162.0	GAPI
Background Reading:	46.1	cps
Calibrator Reading:	180.8	cps
Sensitivity:	1.2020	GAPI/cps

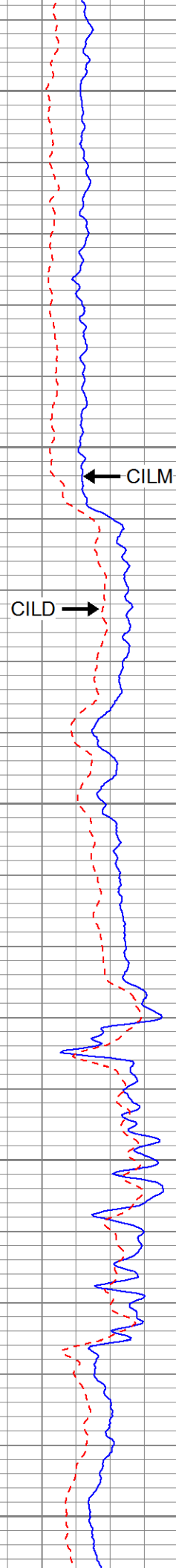
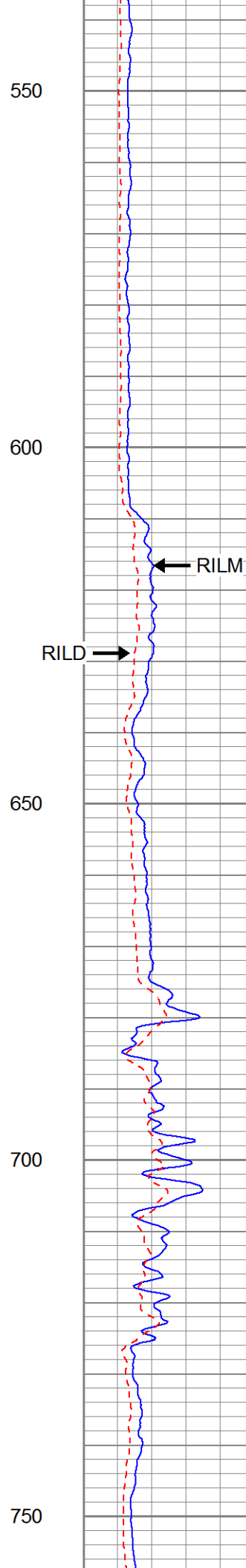
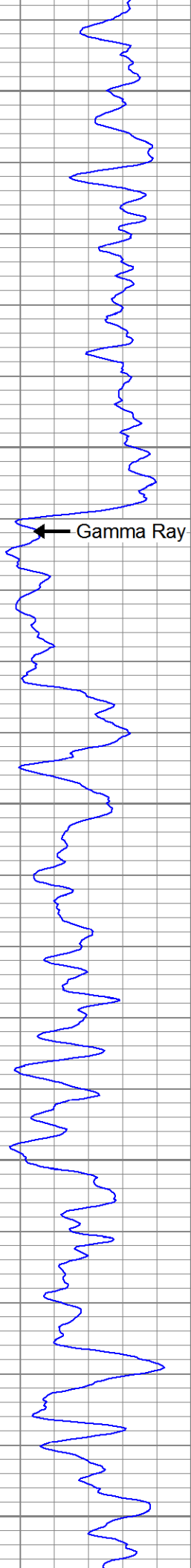
Database File	16857.db
Dataset Pathname	DIL
Presentation Format	elog
Dataset Creation	Wed Oct 24 22:31:27 2012
Charted by	Depth in Feet scaled 1:240

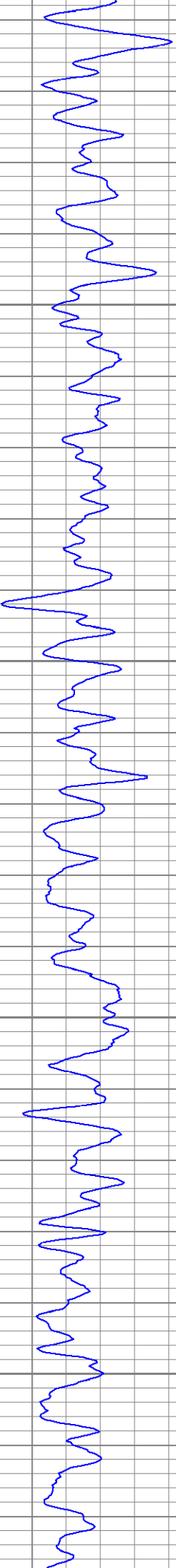
0	Line Speed (ft/min)	-100	0	RILM (Ohm-m)	50	400	CILM (mmho/m)	0
30	Gamma Ray (GAPI)	130	0	RILD (Ohm-m)	50	400	CILD (mmho/m)	0
			50	RILM x 10 (Ohm-m)	500	4000	CILM x 10 (mmho/m)	400
			50	RILD x 10 (Ohm-m)	500	4000	CILD x 10 (mmho/m)	400









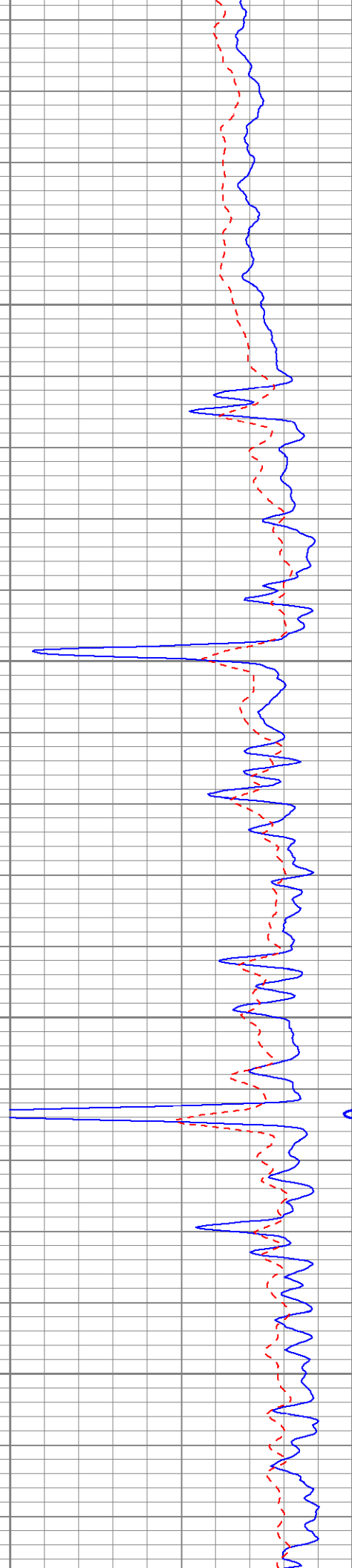
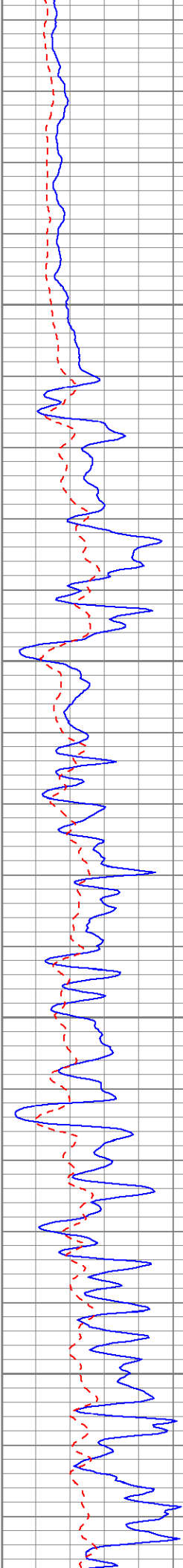


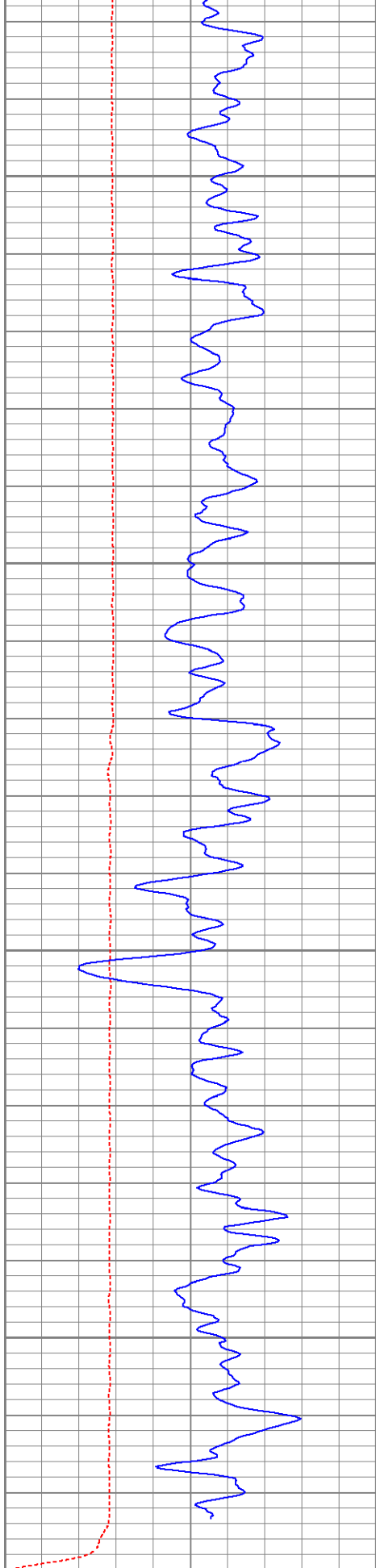
800

850

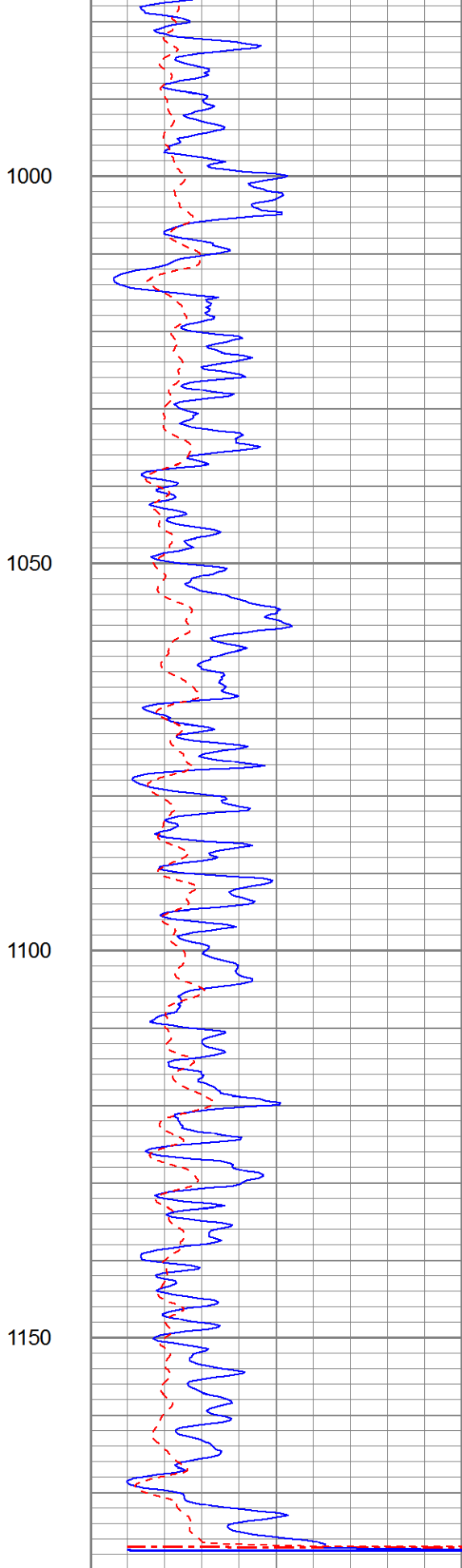
900

950

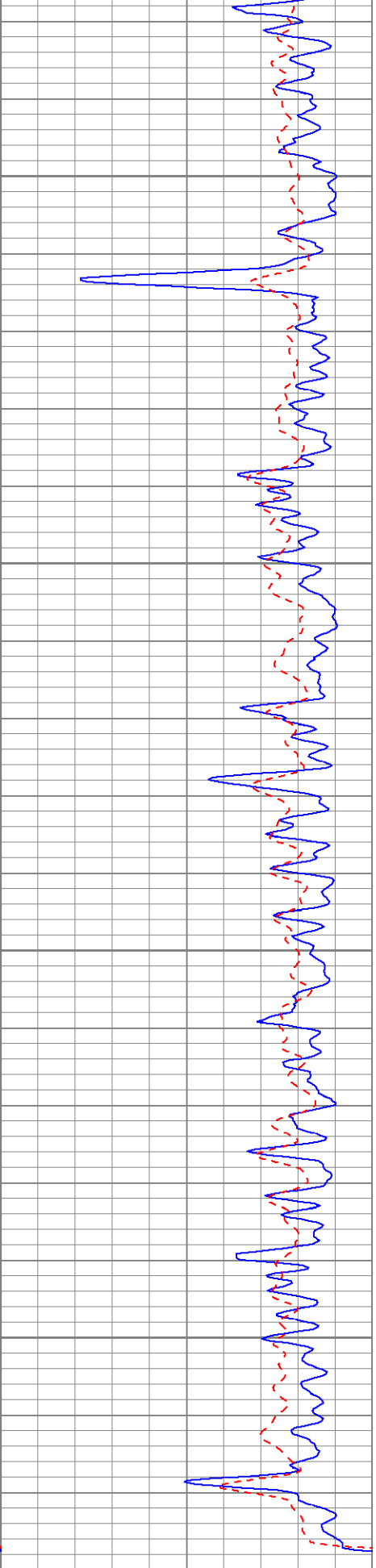




0	Line Speed (ft/min)	-100
30	Gamma Ray (GAPI)	130



0	RILM (Ohm-m)	50	400
0	RILD (Ohm-m)	50	400



0	CILM (mmho/m)	0
0	CILD (mmho/m)	0

50	RILM x 10 (Ohm-m)	500	4000	CILM x 10 (mmho/m)	400
50	RILD x 10 (Ohm-m)	500	4000	CILD x 10 (mmho/m)	400

DATE	DESCRIPTION	AMOUNT	BALANCE
1/1/20	OPENING BALANCE		100.00
1/5/20	SALES	50.00	150.00
1/10/20	PAYROLL	20.00	130.00
1/15/20	RENT	30.00	100.00
1/20/20	SALES	40.00	140.00
1/25/20	UTILITIES	15.00	125.00
1/30/20	SALES	35.00	160.00
2/1/20	CLOSING BALANCE		160.00