

| | |
|----------------------|---------------------|
| Job No. 13747 | Company U.S.G.S. |
| Well SDOT | |
| Field CHULA VISTA | |
| County SAN DIEGO | State CA |

Location:
2387 FAIVRE ST.
Sec. _____ Twp. _____ Rge. _____

Other Services:
GRILL3
E-LOG
CALIPER

| | | | |
|---------------------------|--------------|-------------------|------|
| Permanent Datum | G.L. | Elevation | K.B. |
| Log Measured From | ROTARY TABLE | above perm. datum | D.F. |
| Drilling Measured From | ROTARY TABLE | | G.L. |
| Date | 3-10-08 | | |
| Run Number | ONE | | |
| Depth Driller | 1610' | | |
| Depth Logger | 1617' | | |
| Bottom Logged Interval | 1614' | | |
| Top Log Interval | 80' | | |
| Casing Driller | 16" @ 100' | | |
| Casing Logger | 100' | | |
| Bit Size | SEE COMMENTS | | |
| Type Fluid in Hole | BENTONITE | | |
| Density / Viscosity | N/A | | |
| pH / Fluid Loss | N/A | | |
| Source of Sample | PIT | | |
| Rm @ Meas. Temp | 5.1 @ 77F | | |
| Rmf @ Meas. Temp | 5.6 @ 77F | | |
| Rmc @ Meas. Temp | N/A | | |
| Source of Rmf / Rmc | MEAS | | |
| Rm @ BHT | N/A | | |
| Time Circulation Stopped | N/A | | |
| Time Logger on Bottom | 12:30 PM | | |
| Max. Recorded Temperature | N/A | | |
| Equipment Number | PS-2 | | |
| Location | L.A. | | |
| Recorded By | LAPORTE | | |
| Witnessed By | O'LEARY | | |

<<< Fold Here >>>

All interpretations are opinions based on inferences from electrical or other measurements and we cannot and do not guarantee the accuracy or correctness of any interpretation, and we shall not, except in the case of gross or willful negligence on our part, be liable or responsible for any loss, costs, damages, or expenses incurred or sustained by anyone resulting from any interpretation made by any of our officers, agents or employees. These interpretations are also subject to our general terms and conditions set out in our current Price Schedule.

Comments

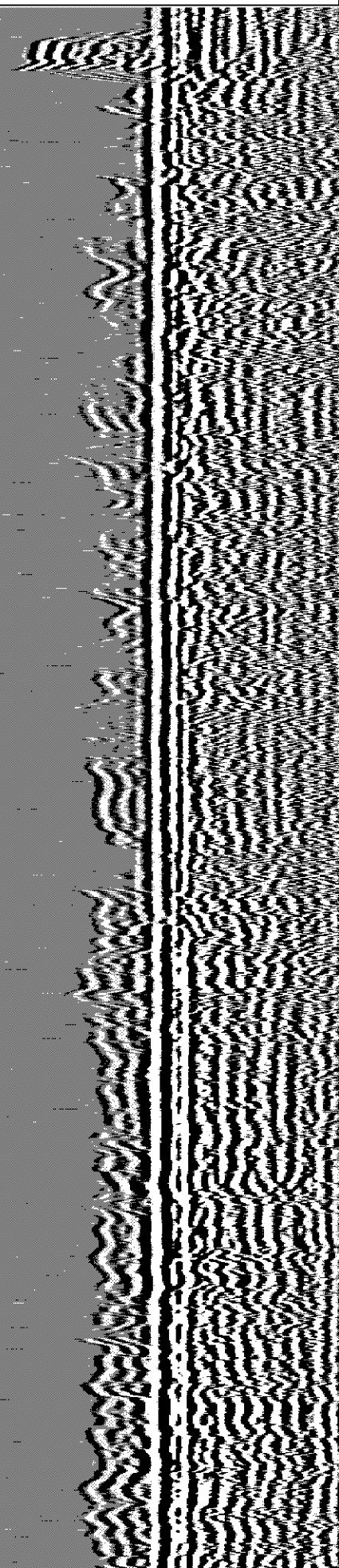
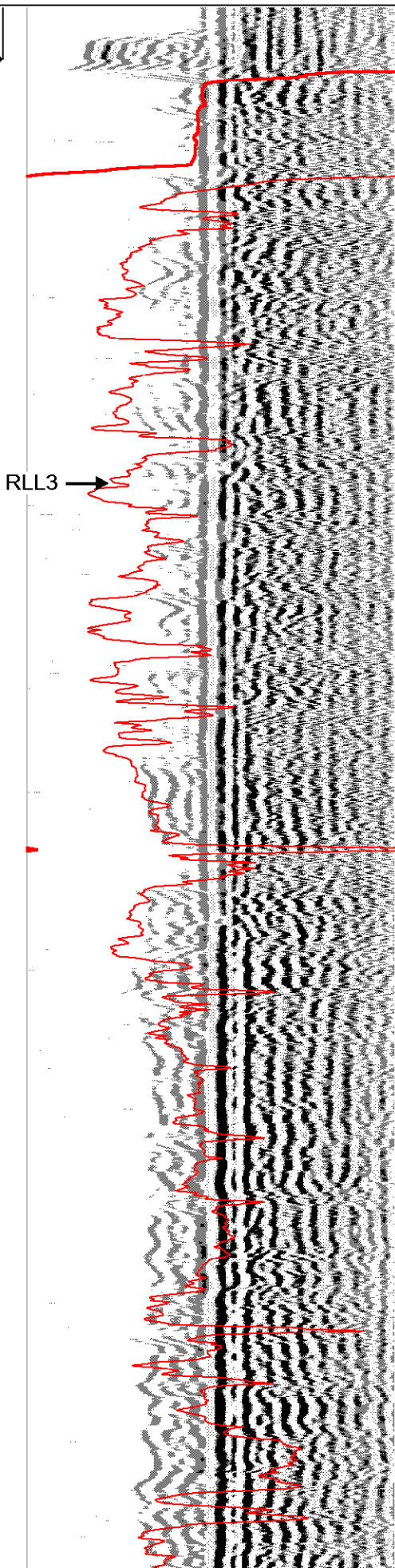
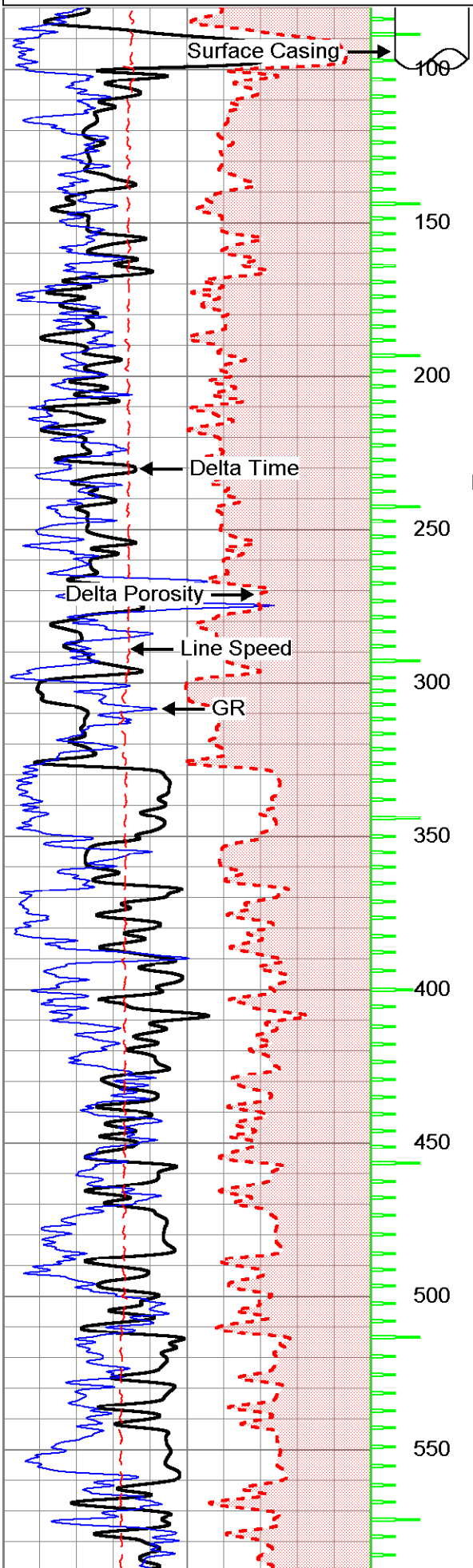
BIT SIZES:
100'-380'= 12.25"
380'-1000'= 9.875"
1000'-T.D.= 7.875"

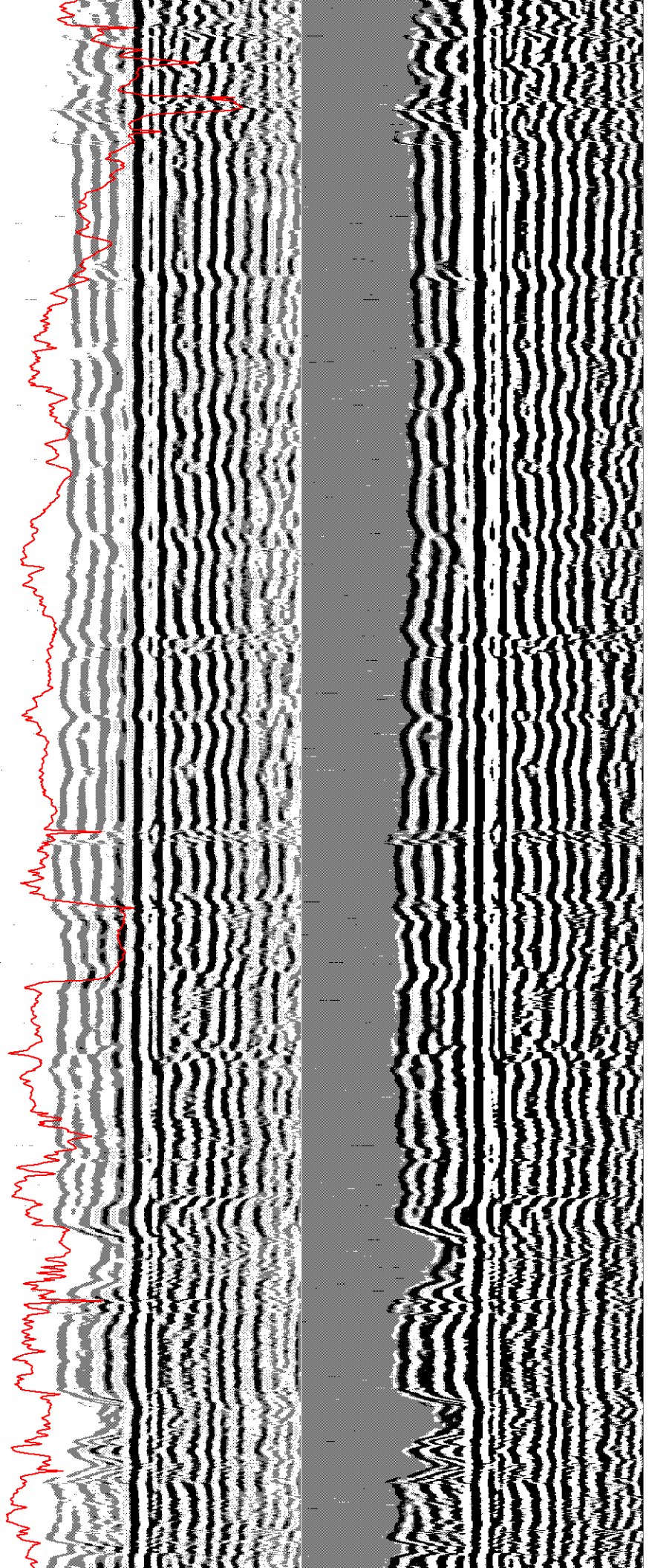
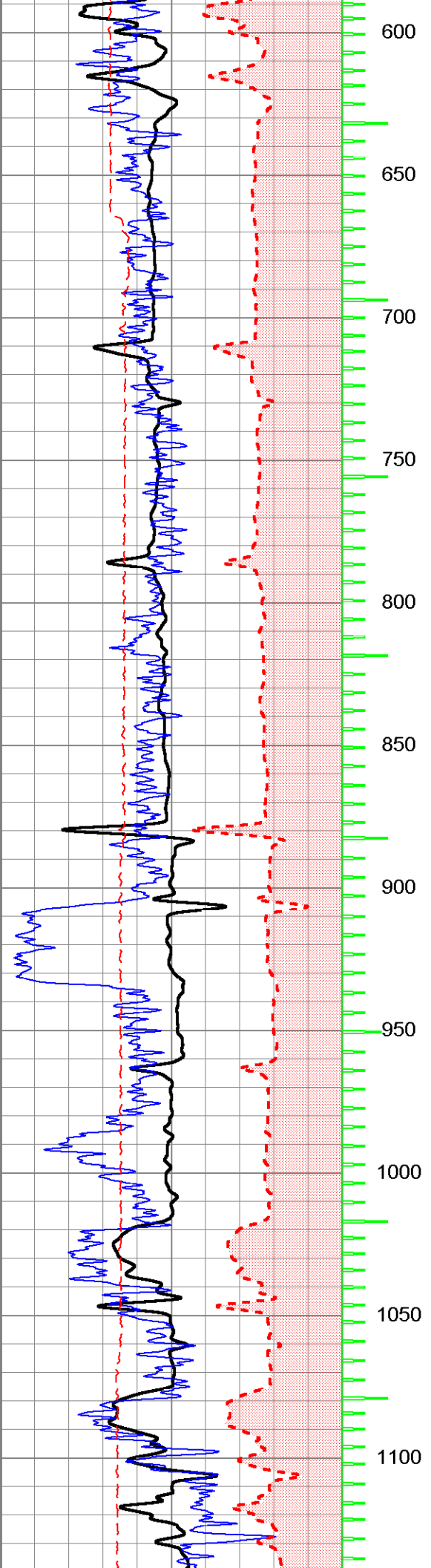
Database File: 13747.db
 Dataset Pathname: USGS/SDOT/run1/SNC
 Presentation Format: SLT
 Dataset Creation: Mon Mar 10 15:59:38 2008 by Log 6.0
 Charted by: Depth in Feet scaled 1:600

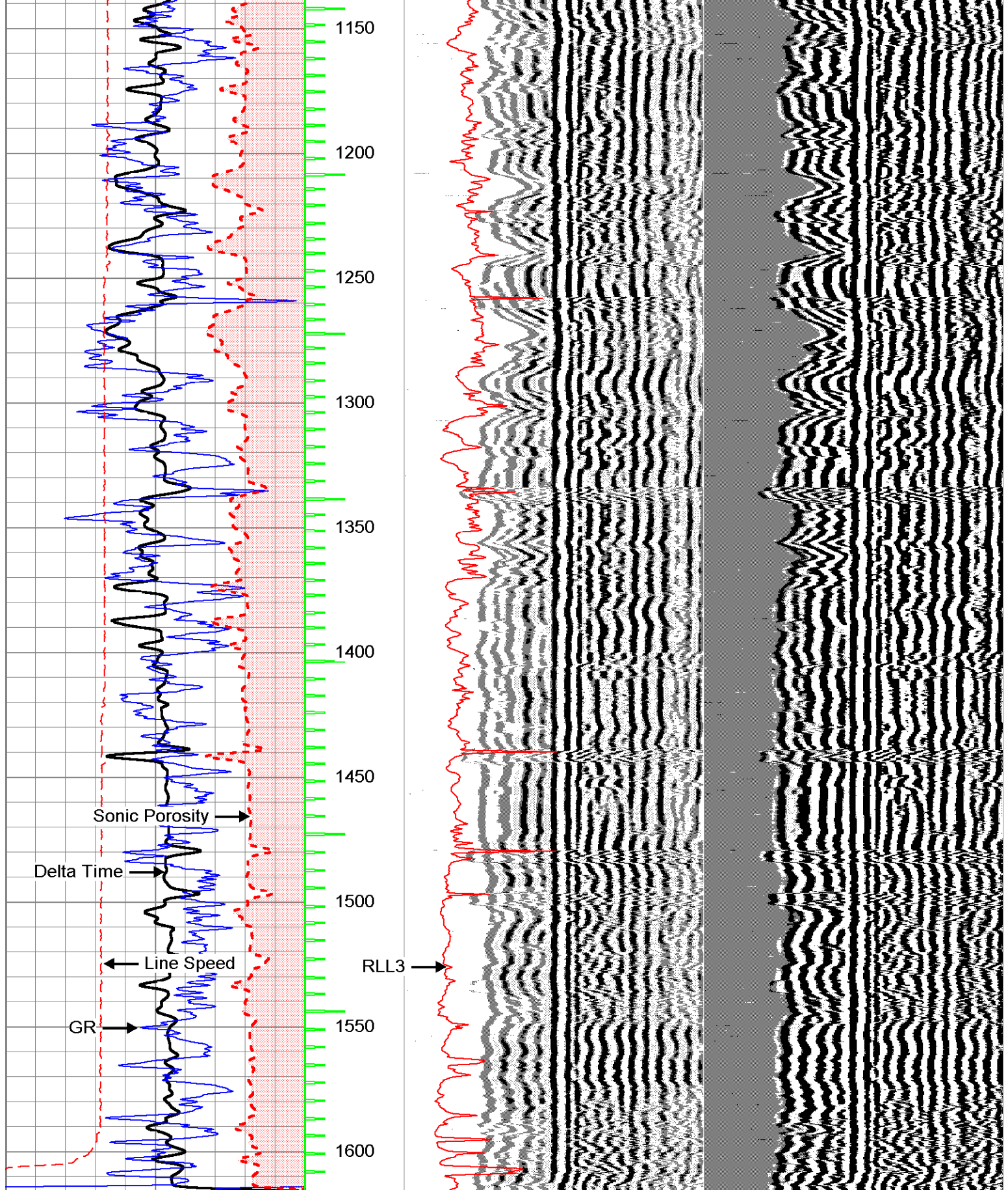
| | | | | | | | | | |
|-----|------------------|-----|------------|-----|-----------------------|------|-----|----------------------|------|
| 250 | DT (usec/ft) | 50 | ITT (msec) | 500 | Variable Density 5 ft | 1600 | 500 | Variable Density 5ft | 1600 |
| 30 | Gamma-Ray (GAPI) | 130 | | 0 | RI 13 (Ohm-m) | 50 | | | |

| | | |
|----|---------------------|-----|
| 60 | SPOR (pu) | 0 |
| 0 | Line Speed (ft/min) | 100 |

| | | |
|----|------------------|-----|
| 50 | RLL3 X10 (Ohm-m) | 500 |
|----|------------------|-----|







| | | | | | | | | | |
|-----|---------------------|-----|------------|-----|-----------------------|------|-----|----------------------|------|
| 250 | DT (usec/ft) | 50 | ITT (msec) | 500 | Variable Density 5 ft | 1600 | 500 | Variable Density 5ft | 1600 |
| 30 | Gamma-Ray (GAPI) | 130 | | 0 | RLL3 (Ohm-m) | 50 | | | |
| 60 | SPOR (pu) | 0 | | 50 | RLL3 X10 (Ohm-m) | 500 | | | |
| 0 | Line Speed (ft/min) | 100 | | | | | | | |