

Job No. 13747	Company U.S.G.S.
Well SDOT	
Field CHULA VISTA	
County SAN DIEGO	State CA

Location:  
2387 FAIVRE ST.  
Sec. \_\_\_\_\_ Twp. \_\_\_\_\_ Rge. \_\_\_\_\_

Other Services:  
E-LOG  
CALIPER  
SONIC/VDL

Permanent Datum	G.L.	Elevation	Elevation
Log Measured From	ROTARY TABLE	above perm. datum	K.B.
Drilling Measured From	ROTARY TABLE		D.F.
			G.L.
Date	3-10-08		
Run Number	ONE		
Depth Driller	1610'		
Depth Logger	1617'		
Bottom Logged Interval	1616'		
Top Log Interval	80'		
Casing Driller	16" @ 100'		
Casing Logger	100'		
Bit Size	SEE COMMENTS		
Type Fluid in Hole	BENTONITE		
Density / Viscosity	N/A		
pH / Fluid Loss	N/A		
Source of Sample	PIT		
Rm @ Meas. Temp	5.1 @ 77F		
Rmf @ Meas. Temp	5.6 @ 77F		
Rmc @ Meas. Temp	N/A		
Source of Rmf / Rmc	MEAS		
Rm @ BHT	N/A		
Time Circulation Stopped	N/A		
Time Logger on Bottom	12:30 PM		
Max. Recorded Temperature	N/A		
Equipment Number	PS-2		
Location	L.A.		
Recorded By	LAPORTE		
Witnessed By	O'LEARY		

<<< Fold Here >>>

All interpretations are opinions based on inferences from electrical or other measurements and we cannot and do not guarantee the accuracy or correctness of any interpretation, and we shall not, except in the case of gross or willful negligence on our part, be liable or responsible for any loss, costs, damages, or expenses incurred or sustained by anyone resulting from any interpretation made by any of our officers, agents or employees. These interpretations are also subject to our general terms and conditions set out in our current Price Schedule.

### Comments

BIT SIZES:  
100'-380' = 12.25"  
380'-1000' = 9.875"  
1000'-T.D. = 7.875"

### Gamma Ray Calibration Report

Serial Number: 13  
 Tool Model: GROH  
 Performed: Wed Mar 07 10:26:48 2007  
 Calibrator Value: 192 GAPI

Background Reading: 39.9944  
 Calibrator Reading: 227.211

Sensitivity: 1.3653 GAPI/

### Simplec Long Guard Calibration Report

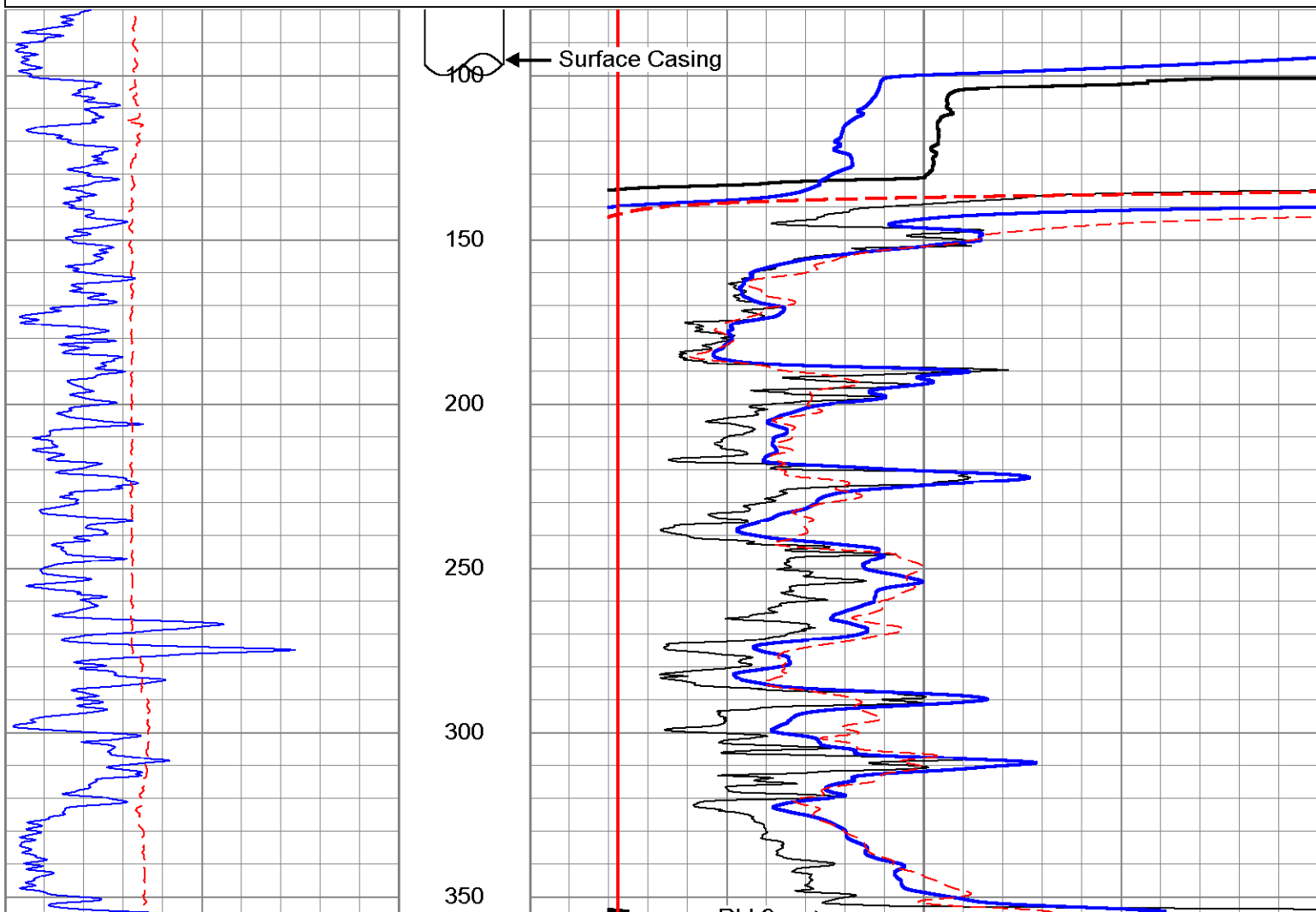
Serial Number: 294  
 Tool Model: M&W  
 Performed: Thu Feb 07 17:06:02 2008

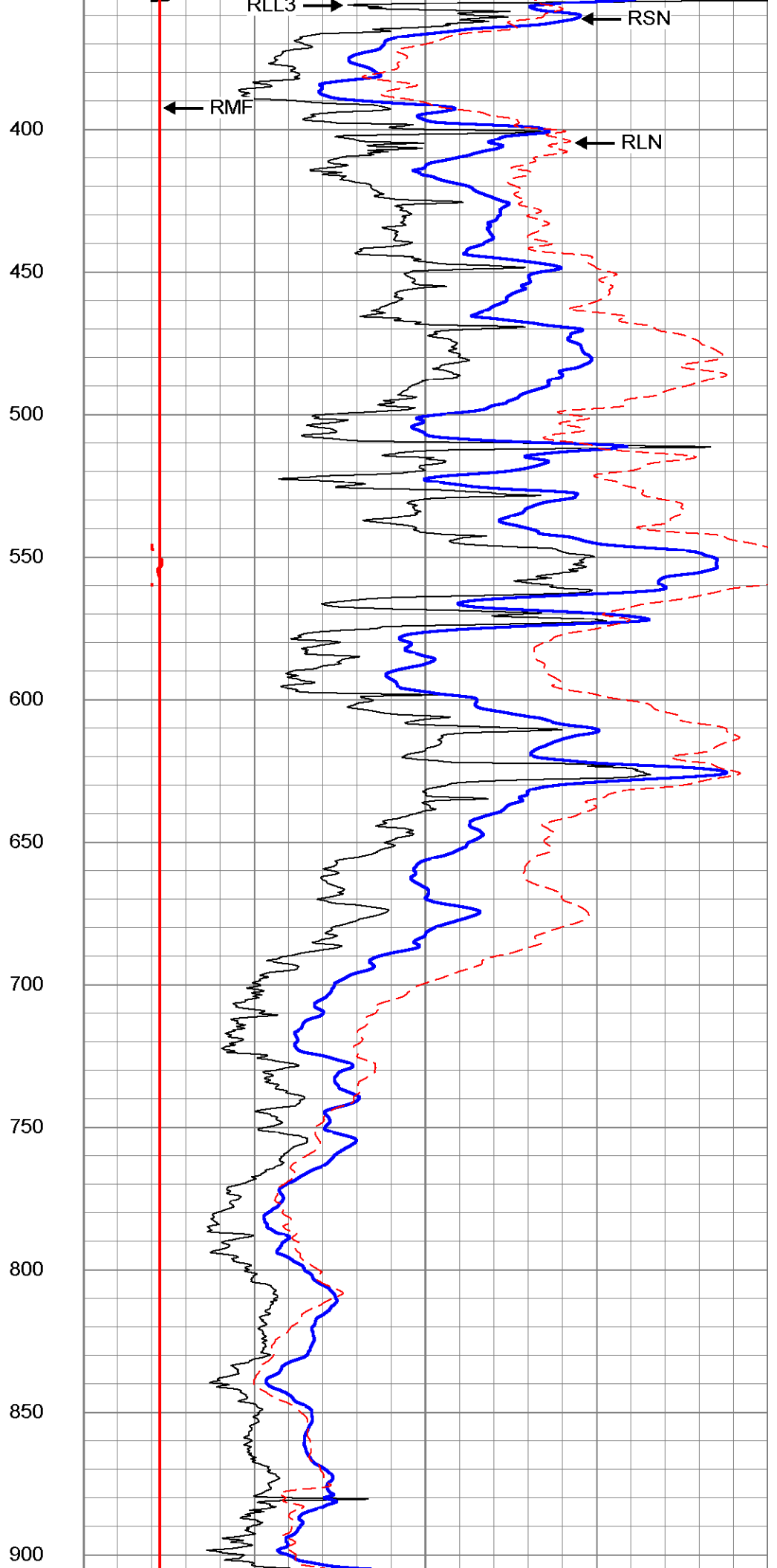
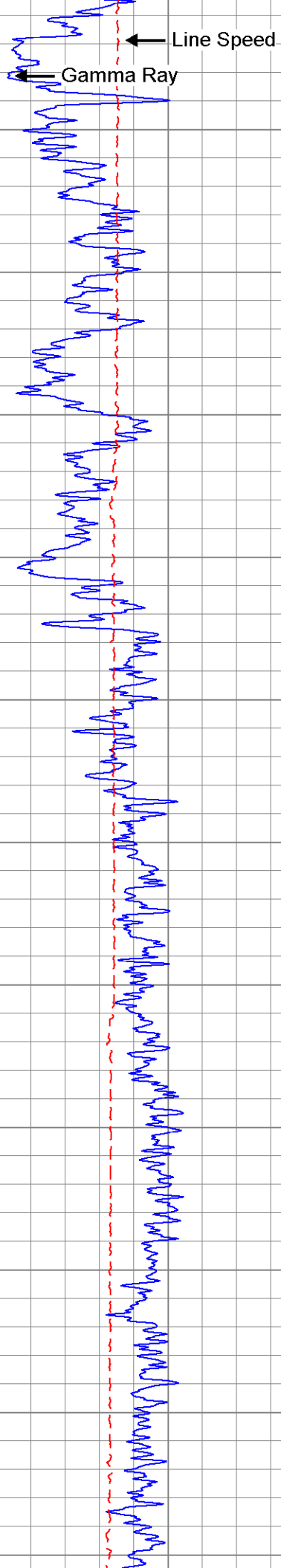
System Reading	Calibration Reference
0.476	2.500 Ohm-m
0.691	5.000
6.951	50.000
32.787	250.000
2788.790	500.000

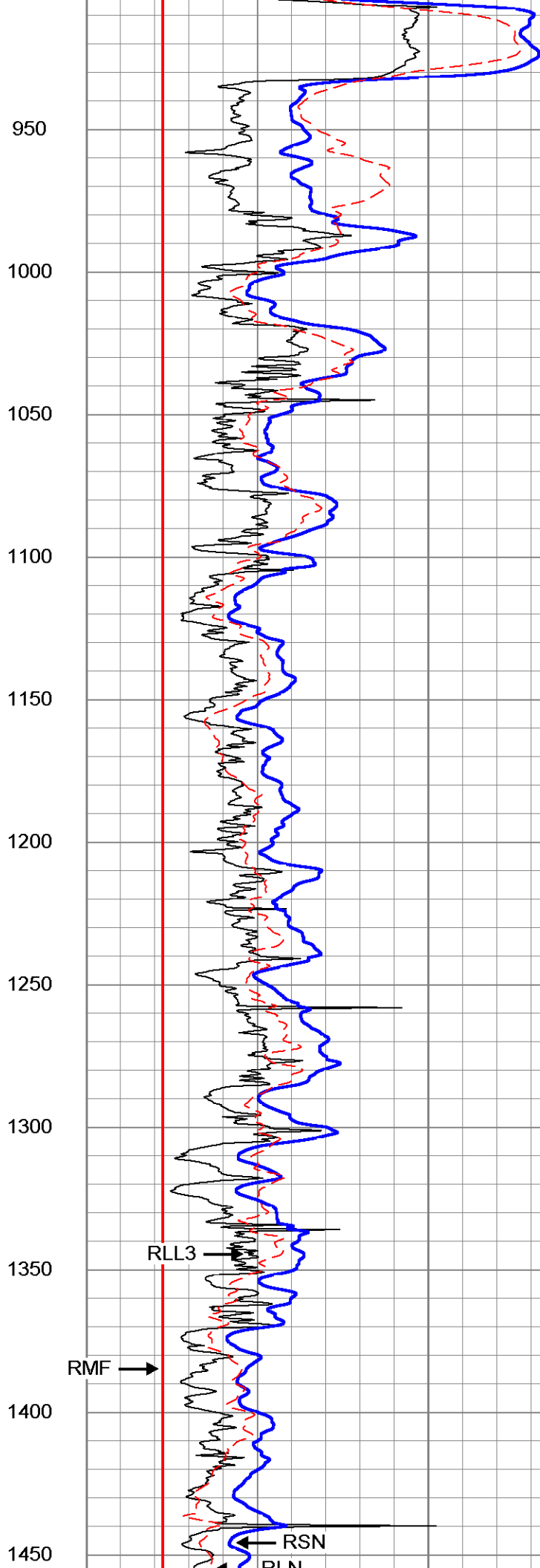
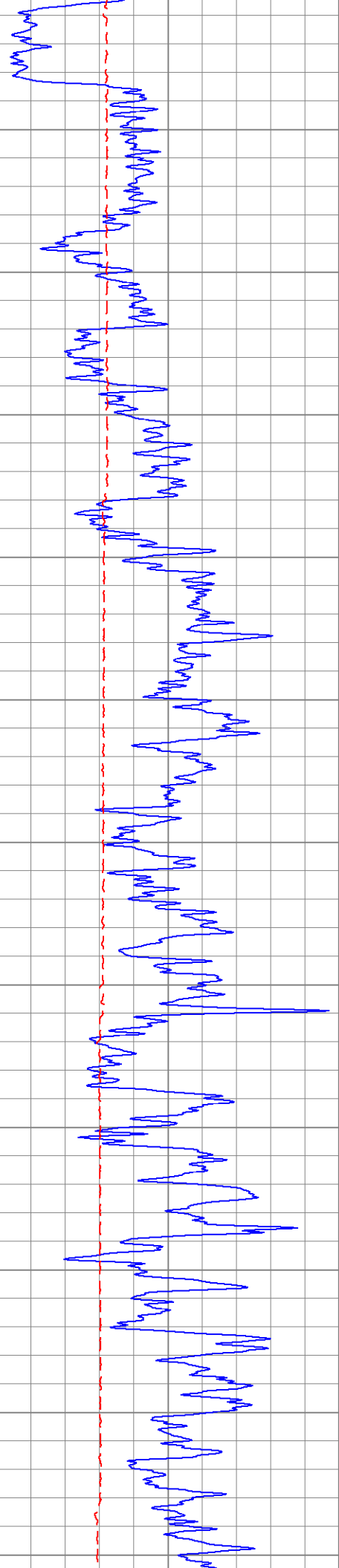
Database File: 13747.db  
 Dataset Pathname: USGS/SDOT/run1/LL3  
 Presentation Format: GUARD  
 Dataset Creation: Mon Mar 10 12:36:34 2008 by Log 6.0  
 Charted by: Depth in Feet scaled 1:600

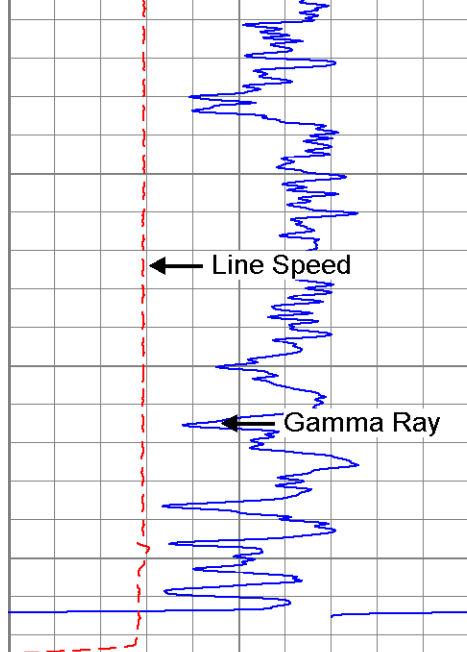
30	Gamma Ray (GAPI)	130
0	Line Speed (ft/min)	100

0	RLL3 (Ohm-m)	50
0	RSN (Ohm-m)	50
0	RLN (Ohm-m)	50
0	RMF (Ohm-m)	50
50	RLL3 X10 (Ohm-m)	500
50	RSN X10 (Ohm-m)	500
50	RLN X10 (Ohm-m)	500

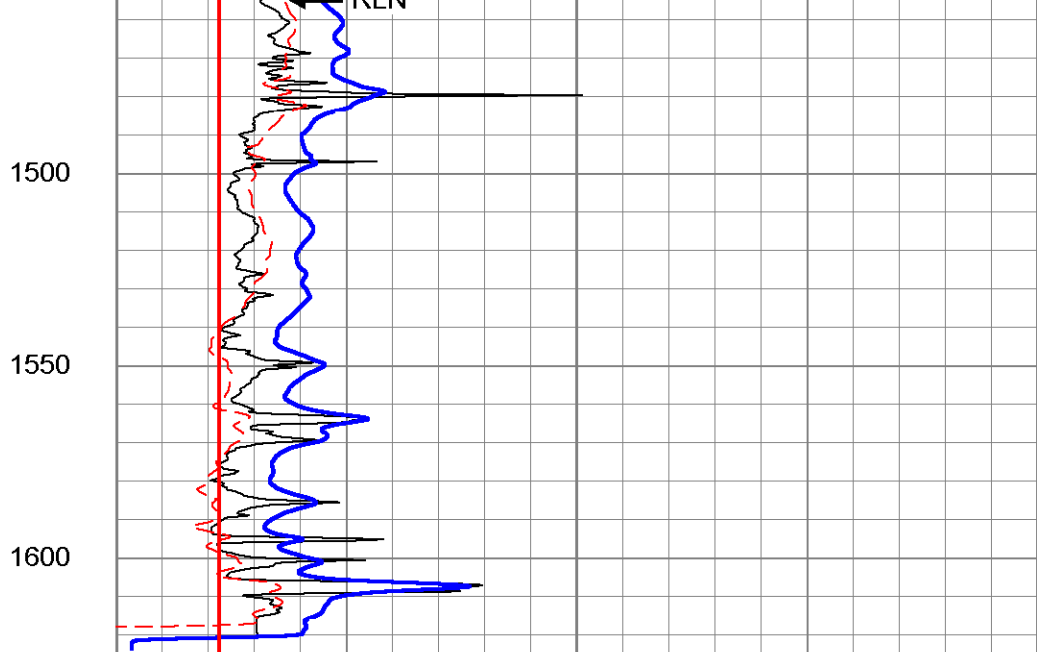








30	Gamma Ray (GAPI)	130
0	Line Speed (ft/min)	100



0	RLL3 (Ohm-m)	50
0	RSN (Ohm-m)	50
0	RLN (Ohm-m)	50
0	RMF (Ohm-m)	50
50	RLL3 X10 (Ohm-m)	500
50	RSN X10 (Ohm-m)	500
50	RLN X10 (Ohm-m)	500