

Job No. 13747	Company U.S.G.S.
Well SDOT	
Field CHULA VISTA	
County SAN DIEGO	State CA

Location:
2387 FAIVRE ST.
Sec. _____ Twp. _____ Rge. _____

Other Services:
GRILL3
CALIPER
SONIC/VDL

Permanent Datum	G.L.	Elevation	Elevation
Log Measured From	ROTARY TABLE	above perm. datum	K.B.
Drilling Measured From	ROTARY TABLE		D.F.
			G.L.
Date	3-10-08		
Run Number	ONE		
Depth Driller	1610'		
Depth Logger	1617'		
Bottom Logged Interval	1616'		
Top Log Interval	80'		
Casing Driller	16" @ 100'		
Casing Logger	100'		
Bit Size	SEE COMMENTS		
Type Fluid in Hole	BENTONITE		
Density / Viscosity	N/A		
pH / Fluid Loss	N/A		
Source of Sample	PIT		
Rm @ Meas. Temp	5.1 @ 77F		
Rmf @ Meas. Temp	5.6 @ 77F		
Rmc @ Meas. Temp	N/A		
Source of Rmf / Rmc	MEAS		
Rm @ BHT	N/A		
Time Circulation Stopped	N/A		
Time Logger on Bottom	12:30 PM		
Max. Recorded Temperature	N/A		
Equipment Number	PS-2		
Location	L.A.		
Recorded By	LAPORTE		
Witnessed By	O'LEARY		

<<< Fold Here >>>

All interpretations are opinions based on inferences from electrical or other measurements and we cannot and do not guarantee the accuracy or correctness of any interpretation, and we shall not, except in the case of gross or willful negligence on our part, be liable or responsible for any loss, costs, damages, or expenses incurred or sustained by anyone resulting from any interpretation made by any of our officers, agents or employees. These interpretations are also subject to our general terms and conditions set out in our current Price Schedule.

Comments

BIT SIZES:
100'-380'= 12.25"
380'-1000'= 9.875"
1000'-T.D.= 7.875"

ELOG Calibration Report

Serial:
Model:

D1
DTQ

Shop Calibration Performed:
Before Survey Verification Performed:
After Survey Verification Performed:

Thu Feb 07 16:41:10 2008
Thu Feb 07 16:27:48 2008
Wed Aug 08 11:59:21 2007

Shop Calibration

	Readings			References			Results	
	Zero	Cal		Zero	Cal		Gain	Offset
Short	9.254	100.643		10.200	102.200	Ohm-m	1.007	0.884
Long	10.285	99.536		10.200	102.200	Ohm-m	1.031	-17.567
IEE	122.500	4787.241	counts	0.134	5.239	A		
VSN	19.333	5358.371	counts	0.369	102.204	V		
VLN	202.361	1441.519	counts	3.860	27.495	V		

Before Survey Verification

	Readings			References			Results	
	Zero	Cal		Zero	Cal		Gain	Offset
Short	2.141	99.805		4.899	98.795	Ohm-m	0.961	2.840
Long	275.305	106.928		106.443	106.443	Ohm-m	1.502	-54.132
IEE	169.722	5002.222	counts	0.186	5.474	A		
VSN	4.083	5609.056	counts	0.078	106.986	V		
VLN	131.241	1502.343	counts	2.503	28.655	V		

After Survey Verification

	Readings			References			Results	
	Zero	Cal		Zero	Cal		Gain	Offset
Short	5.001	99.646		2.141	99.805	Ohm-m	1.032	-3.020
Long	331.859	109.647		106.928	106.928	Ohm-m	0.758	23.845
IEE	186.358	5012.295	counts	0.204	5.485	A		
VSN	10.472	5611.419	counts	0.200	107.031	V		
VLN	173.708	1543.657	counts	3.313	29.443	V		

After Survey Verification compared to Before Survey Calibration

	Zero			Cal		
	Before	After		Before	After	
Short	4.899	2.141	Ohm-m	98.795	99.805	Ohm-m
Long	359.298	275.305	Ohm-m	106.443	106.928	Ohm-m

Gamma Ray Calibration Report

Serial Number: D1
 Tool Model: ELOG
 Performed: Tue Nov 13 14:51:37 2007

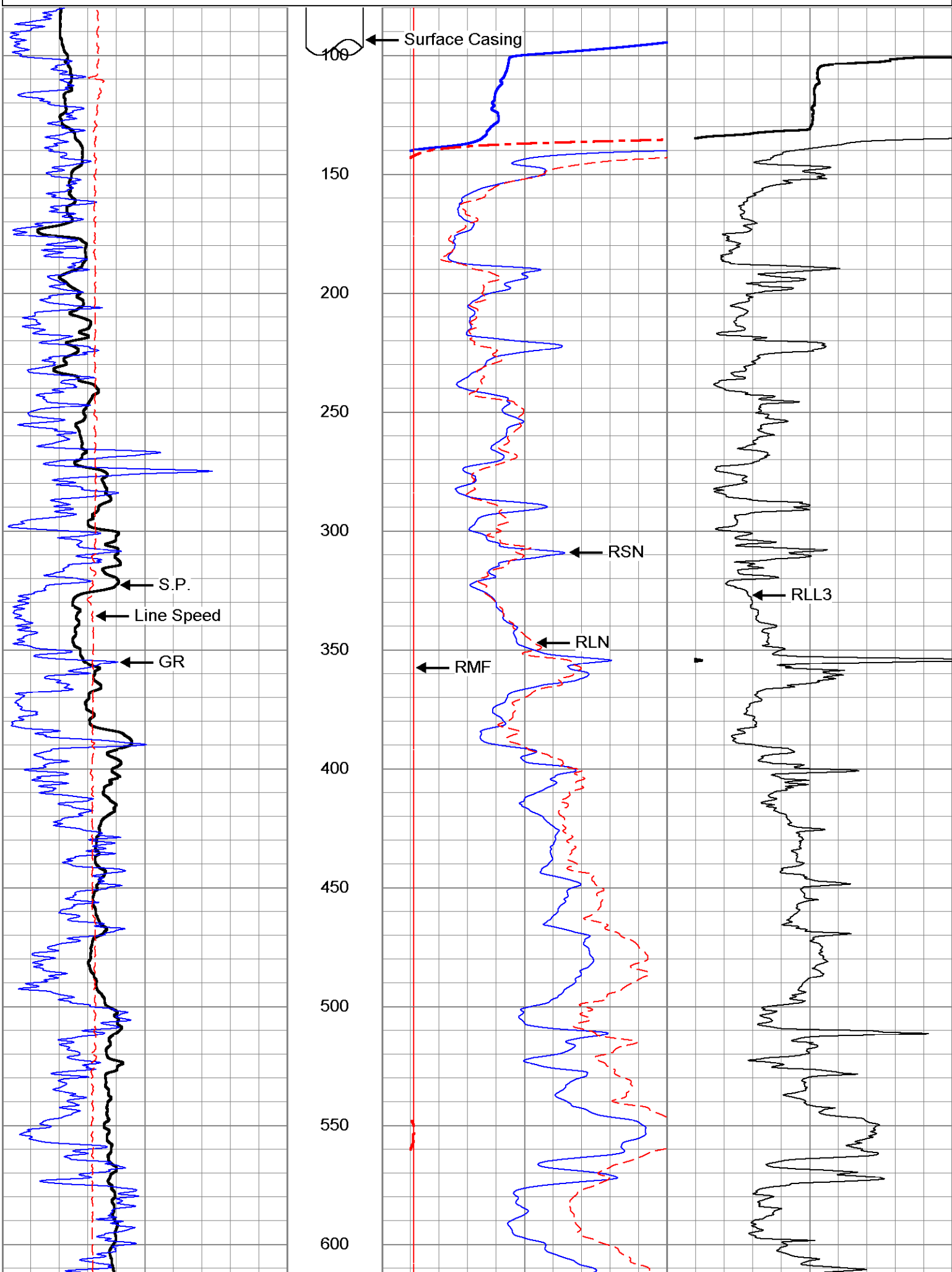
Calibrator Value: 162 GAPI

Background Reading: 167.616 cps
 Calibrator Reading: 723.89 cps

Sensitivity: 0.291222 GAPI/cps

Database File: 13747.db
 Dataset Pathname: USGS/SDOT/run1/Elog
 Presentation Format: ELOG2
 Dataset Creation: Mon Mar 10 11:29:23 2008 by Log 6.0
 Charted by: Depth in Feet scaled 1:600

-50	S.P. (mV)	50	0	RSN (Ohm-m)	50	0	RLL3 (Ohm-m)	50
30	Gamma Ray (GAPI)	130	0	RLN (Ohm-m)	50	50	RLL3 X10 (Ohm-m)	500
0	Line Speed (ft/min)	100	0	RMF (Ohm-m)	50			
			50	RSN X10 (Ohm-m)	500			



100

Surface Casing

150

200

250

300

350

RMF

RSN

RLN

RLL3

400

450

500

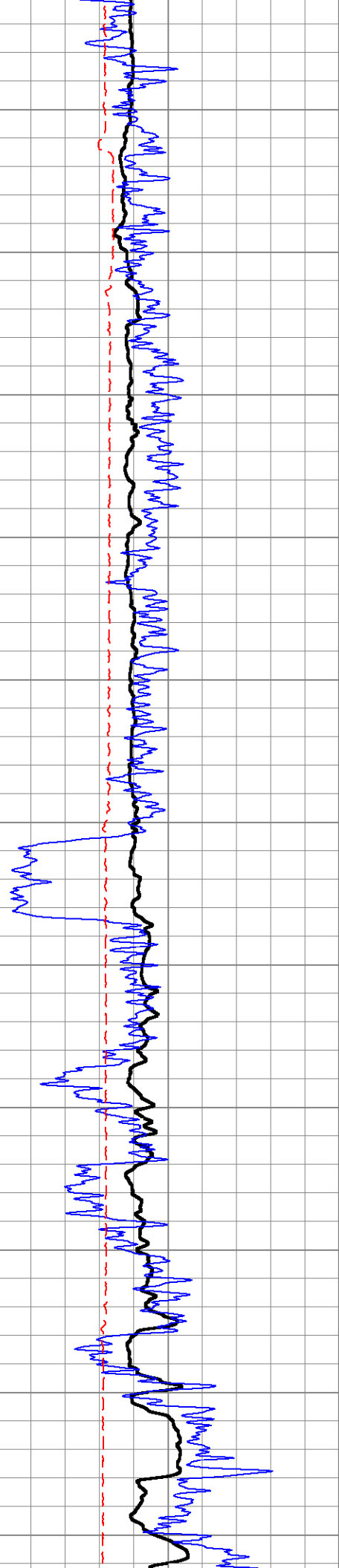
550

600

S.P.

Line Speed

GR



650

700

750

800

850

900

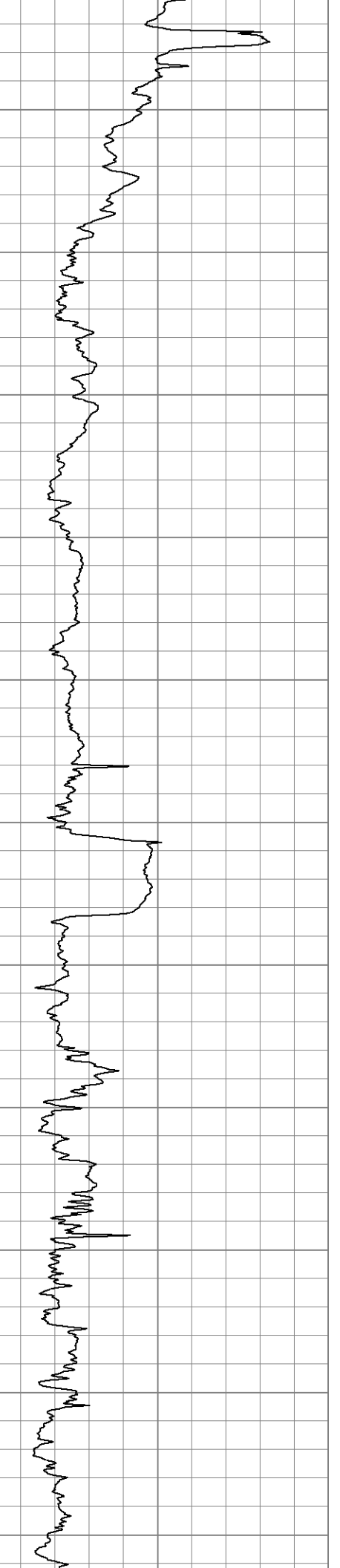
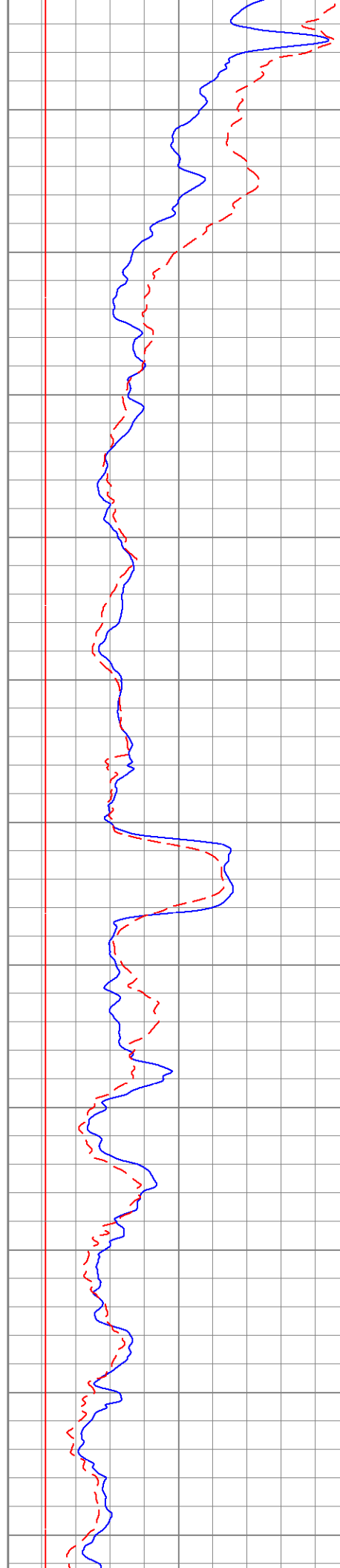
950

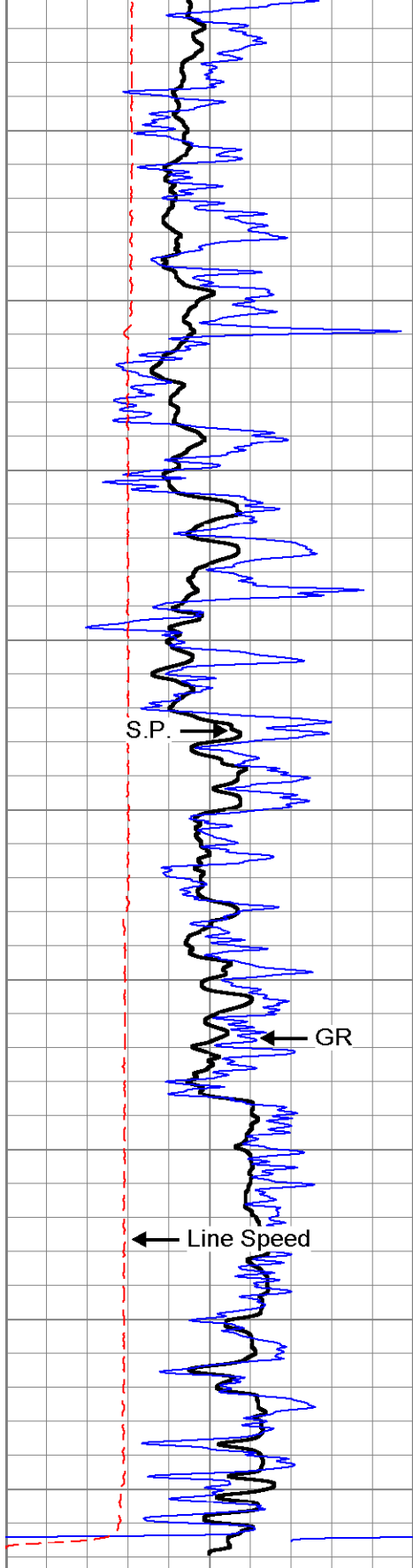
1000

1050

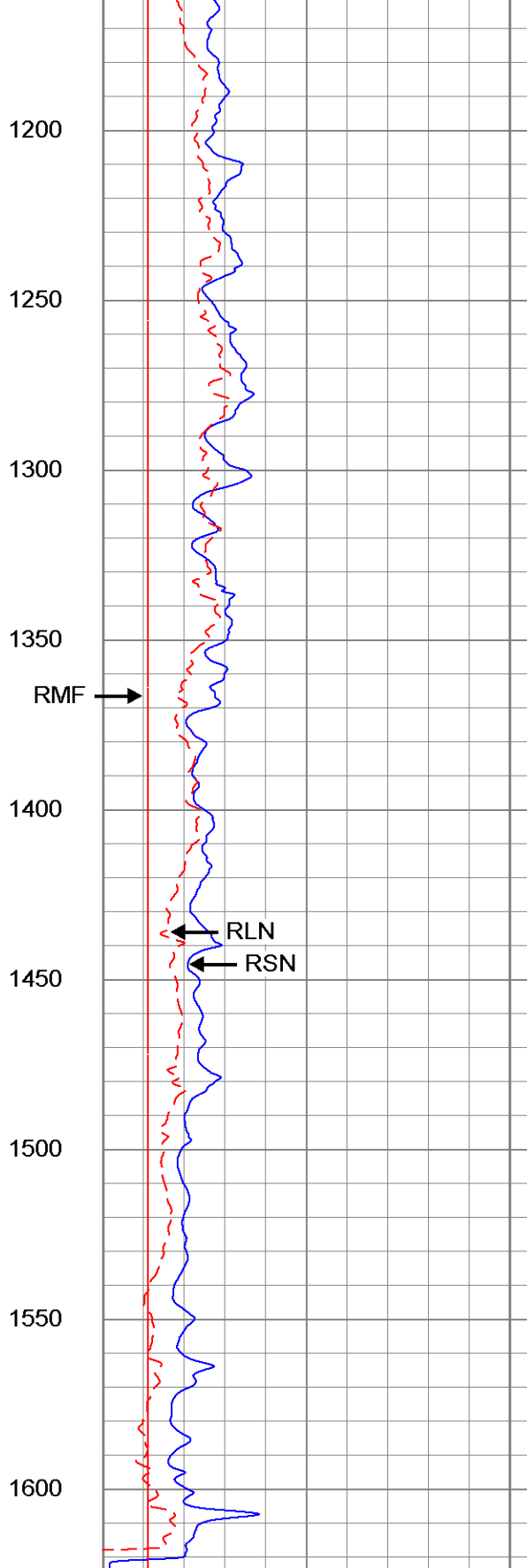
1100

1150



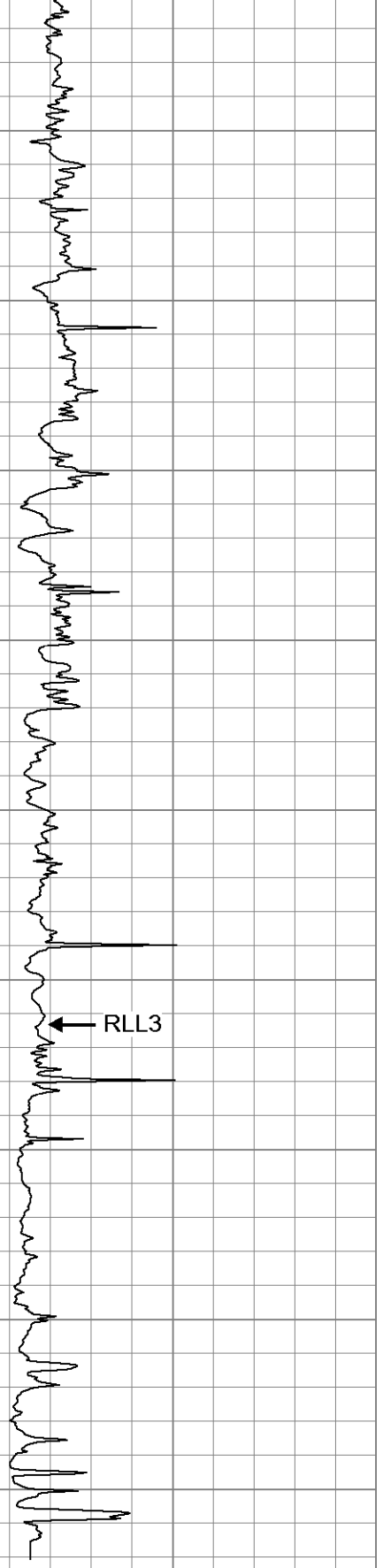


-50	S.P. (mV)	50
30	Gamma Ray (GAPI)	130
0	Line Speed (ft/min)	100



0	RSN (Ohm-m)	50
0	RLN (Ohm-m)	50
0	RMF (Ohm-m)	50

50	RSN X10 (Ohm-m)	500
50	RLN X10 (Ohm-m)	500



0	RLL3 (Ohm-m)	50
50	RLL3 X10 (Ohm-m)	500