

Job No. 12644	Company USGS	Well SDNB	Field SAN DIEGO	County SAN DIEGO	State CA
Location: SAN DIEGO NAVY BASE: GATE 32				Other Services: SONIC/DL CALPER	
Sec. _____ Twp. _____		Rge. _____		Elevation	

Permanent Datum	G.L.	Elevation	
Log Measured From	G.L.	0'	above perm. datum
Drilling Measured From	G.L.		
Date	7-7-06		
Run Number	ONE		
Depth Driller	1480'		
Depth Logger	1483'		
Bottom Logged Interval	1481'		
Top Log Interval	80'		
Casing Driller	12" @ 100'		
Casing Logger	100'		
Bit Size	11 5/8"	10 1/2"	8 3/4"
Type Fluid in Hole	BENTONITE		
Density / Viscosity	N/A		
pH / Fluid Loss	N/A		
Source of Sample	PIT		
Rm @ Meas. Temp	2.8 @ 77F		
Rmf @ Meas. Temp	3.1 @ 77F		
Rmc @ Meas. Temp	N/A		
Source of Rmf / Rmc	MEAS		
Rm @ BHT	N/A		
Time Circulation Stopped	2:00 PM		
Time Logger on Bottom	4:30 PM		
Max. Recorded Temperature	N/A		
Equipment Number	PS-1		
Location	L.A.		
Recorded By	LAPORTE		
Witnessed By	T. BROWN		

<<< Fold Here >>>

All interpretations are opinions based on inferences from electrical or other measurements and we cannot and do not guarantee the accuracy or correctness of any interpretation, and we shall not, except in the case of gross or willful negligence on our part, be liable or responsible for any loss, costs, damages, or expenses incurred or sustained by anyone resulting from any interpretation made by any of our officers, agents or employees. These interpretations are also subject to our general terms and conditions set out in our current Price Schedule.

Comments

11 5/8" Bit from 0-340'
 10 1/2" Bit from 340'-820'
 8 3/4" Bit from 820'-T.D.

ELOG Calibration Report

Serial: D1
 Model: DTQ

Shop Calibration Performed:
 Before Survey Verification Performed:
 After Survey Verification Performed:

Sun Jun 04 10:01:26 2006
 Tue Jul 19 10:47:18 2005
 Tue Jul 19 10:48:06 2005

Shop Calibration

	Readings			References			Results	
	Zero	Cal		Zero	Cal		Gain	Offset
Short	8.765	100.326		10.200	102.200	Ohm-m	1.005	1.393
Long	6.000	95.672		10.200	102.200	Ohm-m	1.026	-9.000
IEE	81.130	6430.787	counts	0.089	7.038	A		
VSN	150.685	7283.157	counts	2.874	138.917	V		
VLN	273.991	1862.491	counts	5.226	35.525	V		

Before Survey Verification

	Readings			References			Results	
	Zero	Cal		Zero	Cal		Gain	Offset
Short	233.523	100.068		240.513	100.075	Ohm-m	1.052	-5.229
Long	153.085	101.899		101.907	101.907	Ohm-m	1.103	-10.524
IEE	81.551	5503.704	counts	0.089	6.023	A		
VSN	213.963	6187.676	counts	4.081	118.022	V		
VLN	35.065	1575.222	counts	0.669	30.045	V		

After Survey Verification

	Readings			References			Results	
	Zero	Cal		Zero	Cal		Gain	Offset
Short	234.477	100.076		233.523	100.068	Ohm-m	0.993	0.697
Long	153.355	101.903		101.899	101.899	Ohm-m	0.995	0.522
IEE	81.213	5506.935	counts	0.089	6.027	A		
VSN	213.944	6191.757	counts	4.081	118.100	V		
VLN	34.981	1576.206	counts	0.667	30.064	V		

After Survey Verification compared to Before Survey Calibration

	Zero			Cal		
	Before	After		Before	After	
Short	240.513	233.523	Ohm-m	100.075	100.068	Ohm-m
Long	158.383	153.085	Ohm-m	101.907	101.899	Ohm-m

Gamma Ray Calibration Report

Serial Number: D1
 Tool Model: ELOG
 Performed: Tue Jul 19 10:53:15 2005

Calibrator Value: 162 GAPI

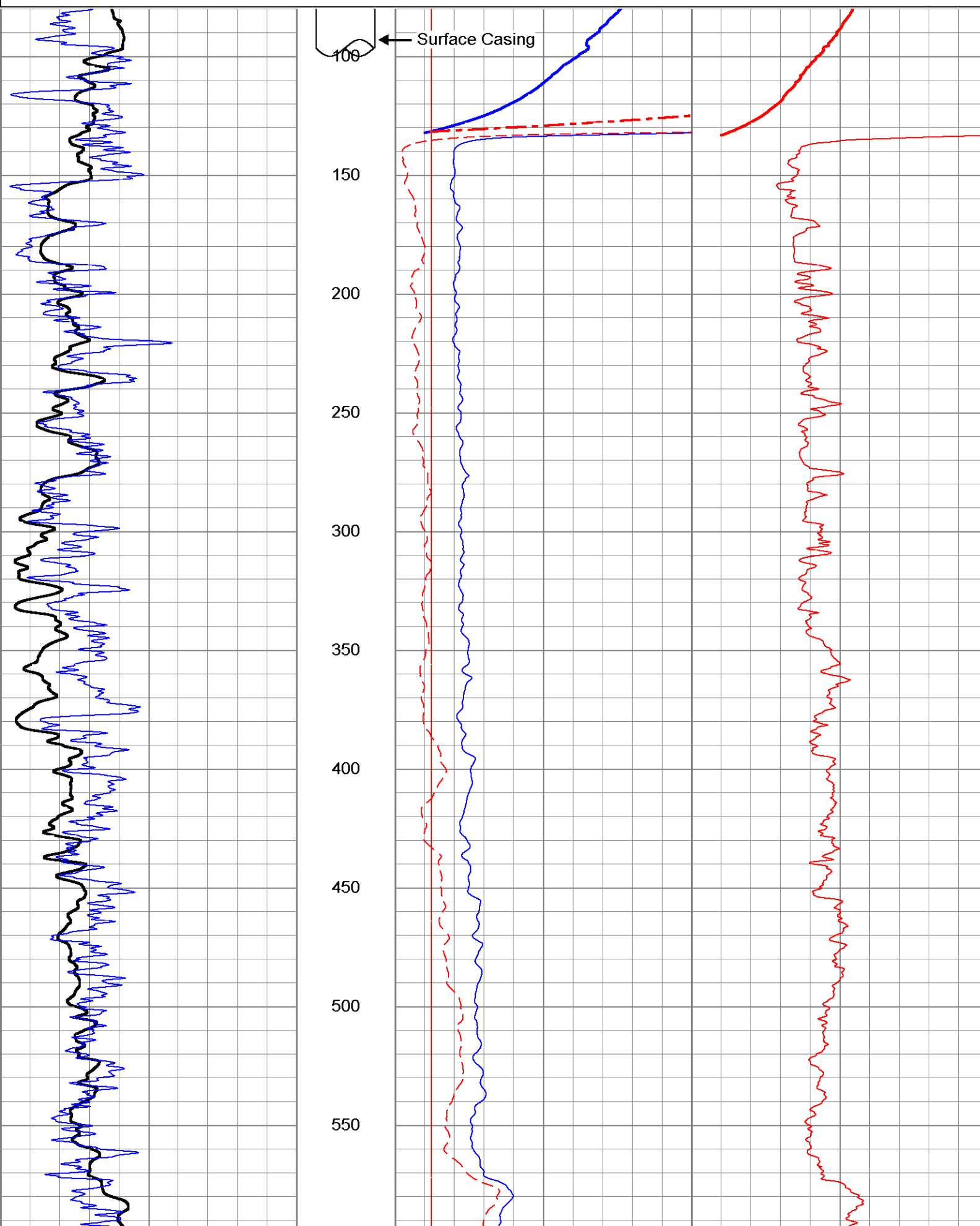
Background Reading: 172.547 cps
 Calibrator Reading: 717.938 cps

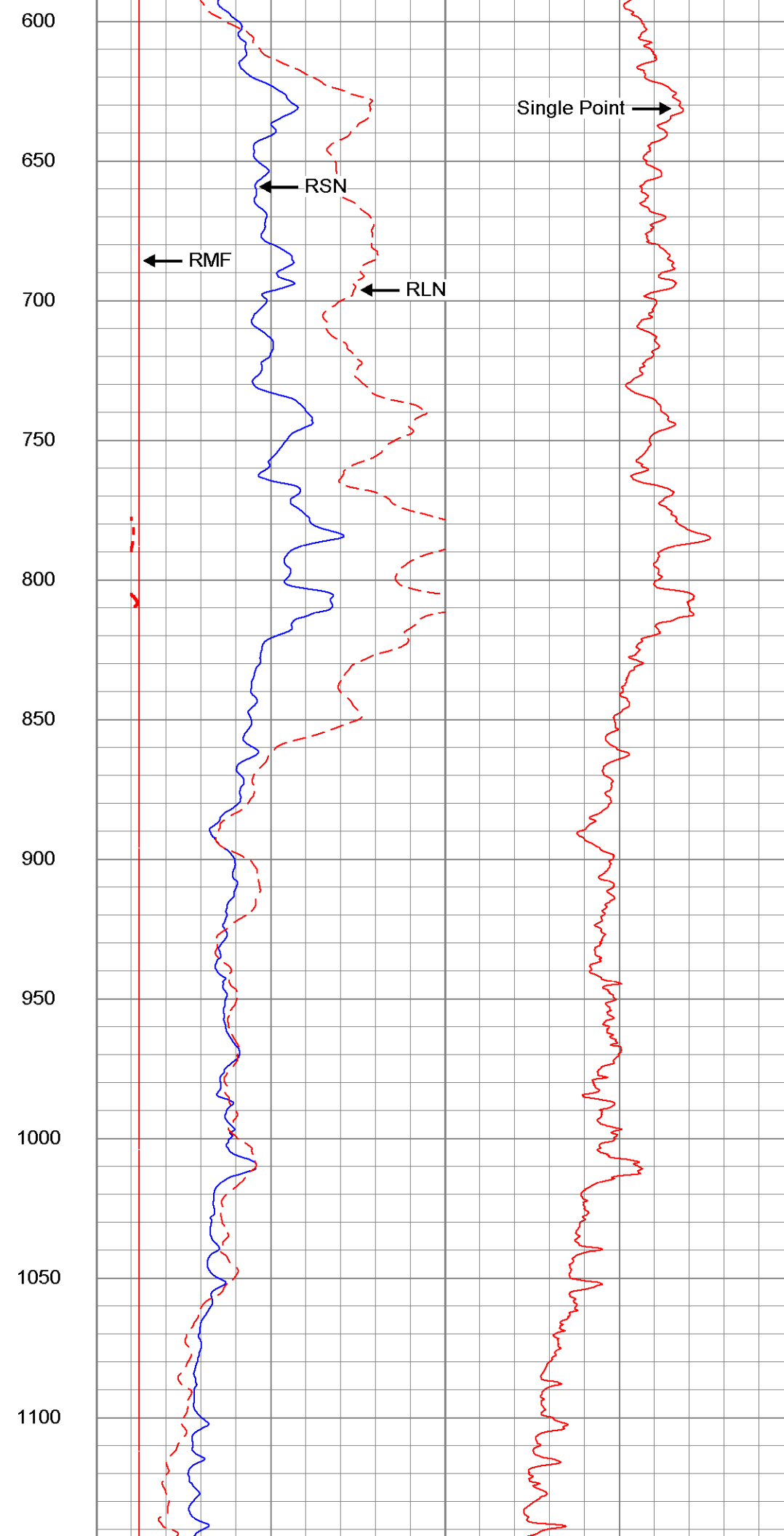
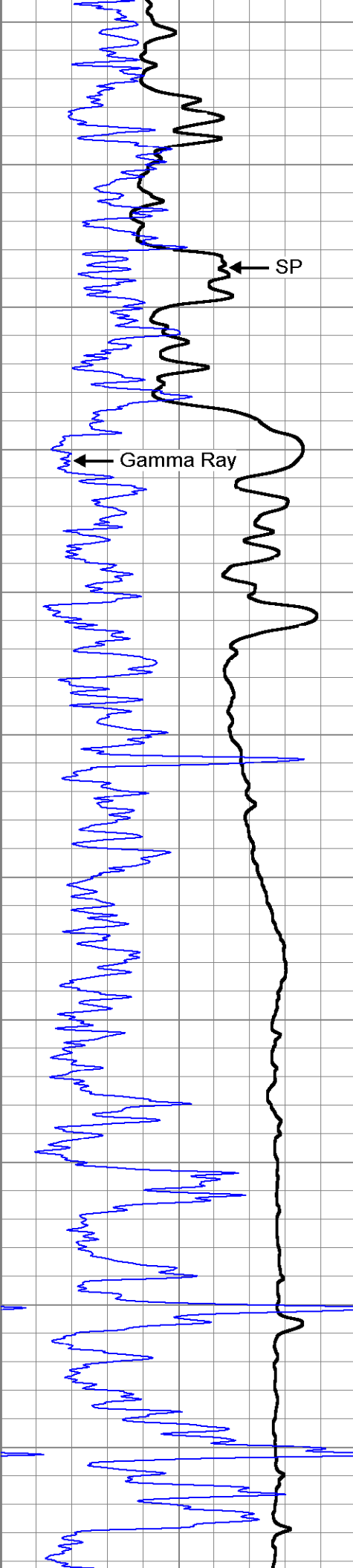
Sensitivity: 0.297034 GAPI/cps

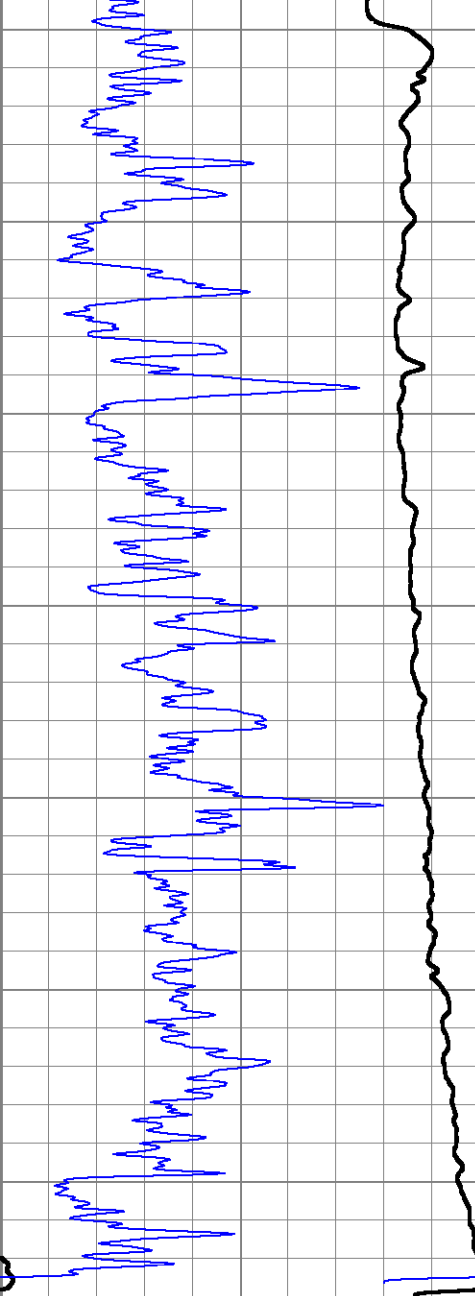
Database File: 12644.db
 Dataset Pathname: USGS/well/run1/Elog.1
 Presentation Format: ELOG
 Dataset Creation: Fri Jul 07 17:14:13 2006 by Calc Warrior Version 6.6
 Charted by: Depth in Feet scaled 1:600

-65	SP (mV)	10	0	RSN (Ohm-m)	25	0	Single Point (Ohm-m)	15
20	Gamma-Ray (GAPI)	120	0	RLN (Ohm-m)	25	15	SPR x 10 (Ohm-m)	150

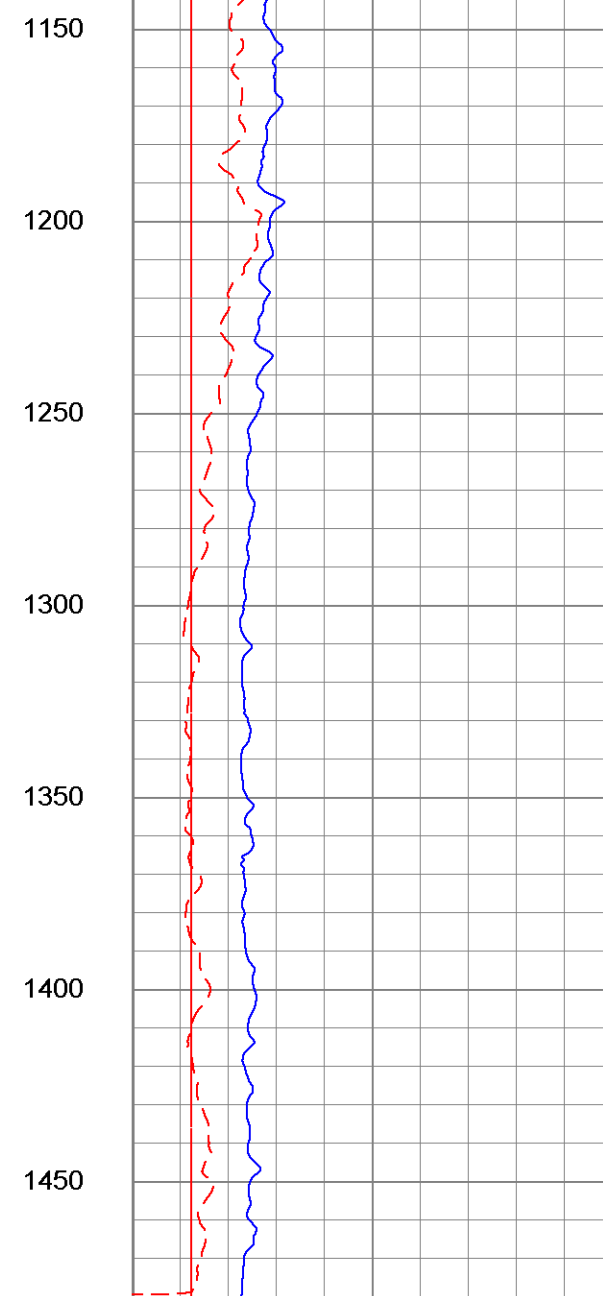
0	RMF (Ohm-m)	25
25	RSN x 10 (Ohm-m)	250
25	RLN x 10 (Ohm-m)	250



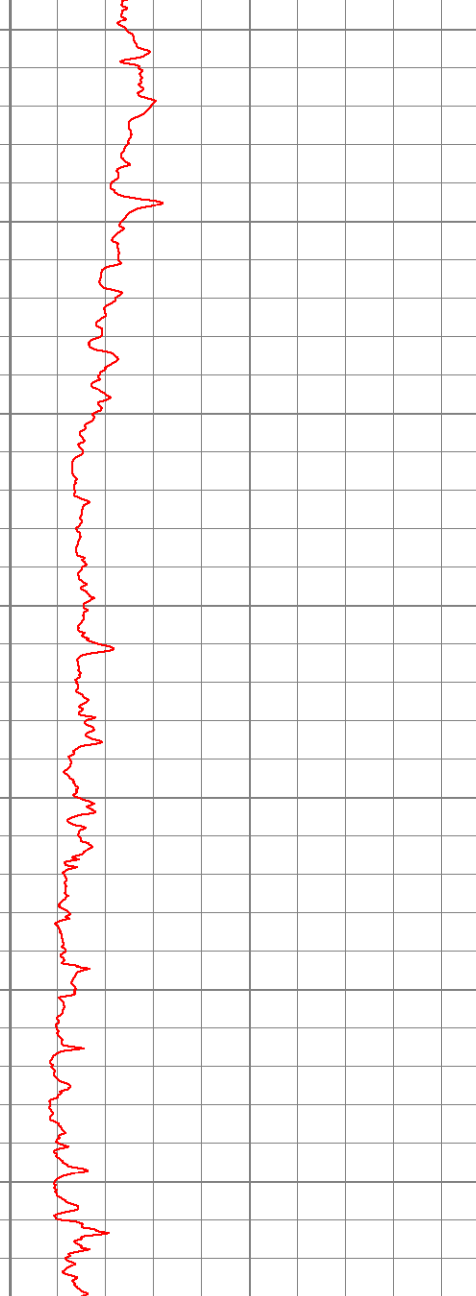




-65	SP (mV)	10
20	Gamma-Ray (GAPI)	120



0	RSN (Ohm-m)	25
0	RLN (Ohm-m)	25
0	RMF (Ohm-m)	25
25	RSN x 10 (Ohm-m)	250
25	RLN x 10 (Ohm-m)	250



0	Single Point (Ohm-m)	15
15	SPR x 10 (Ohm-m)	150