

Job No. 16808
 Company U.S. GEOLOGICAL SURVEY
 Well SDLH
 Field ESCONDIDO
 County SAN DIEGO State CA

Location: 13455 SAN PASQUAL AVE
 GPS: N 33o 03.333' W 117o 02.781'
 Sec. Twp. Rge. Other Services: GRILL3 SONICVDL CALIPER

Permanent Datum	G.L.		Elevation	
Log Measured From	G.L.	0'	above perm. datum	K.B. D.F. G.L.
Drilling Measured From	G.L.			
Date		10-03-2012		
Run Number		ONE		
Depth Driller		275'		
Depth Logger		275'		
Bottom Logged Interval		275'		
Top Log Interval		0'		
Casing Driller		N/A		
Casing Logger		N/A		
Bit Size		9.875" TO 125'	9.5" TO 130'	7.875" TO 275'
Type Fluid in Hole		BENTONITE		
Density / Viscosity		N/A		
pH / Fluid Loss		N/A		
Source of Sample		PIT		
Rm @ Meas. Temp		2.5 @ 91.4F		
Rmf @ Meas. Temp		3.4 @ 91.4F		
Rmc @ Meas. Temp		N/A		
Source of Rmf / Rmc		MEAS		
Rm @ BHT		N/A		
Time Circulation Stopped		1230		
Time Logger on Bottom		1430		
Max. Recorded Temperature		N/A		
Equipment Number		PS-5		
Location		LA		
Recorded By		SCHUMACHER		
Witnessed By		J. NAWIKAS		

<<< Fold Here >>>

All interpretations are opinions based on inferences from electrical or other measurements and we cannot and do not guarantee the accuracy or correctness of any interpretation, and we shall not, except in the case of gross or willful negligence on our part, be liable or responsible for any loss, costs, damages, or expenses incurred or sustained by anyone resulting from any interpretation made by any of our officers, agents or employees. These interpretations are also subject to our general terms and conditions set out in our current Price Schedule.

Comments

Database File 16808.db
 Dataset Pathname ELOG
 Dataset Creation Wed Oct 03 13:49:35 2012

Calibration Report

Serial: D1
 Model: DTQ
 Shop Calibration Performed: Fri Aug 31 10:06:38 2012
 Before Survey Verification Performed: Fri Aug 31 10:09:27 2012
 After Survey Verification Performed: Fri Aug 31 10:11:46 2012

Shop Calibration

	Readings			References			Results	
	Zero	Cal		Zero	Cal		Gain	Offset
Short	9.667	101.482		10.200	102.200	Ohm-m	1.002	0.514
Long	9.618	98.756		10.200	102.200	Ohm-m	1.032	-17.600
IEE	241.820	7561.640	counts	0.265	8.275	A		
VSN	94.920	8607.040	counts	1.810	164.169	V		
VLN	92.720	2183.960	counts	1.769	41.656	V		

Before Survey Verification

	Readings			References			Results	
	Zero	Cal		Zero	Cal		Gain	Offset
Short	28.684	101.321		34.937	101.312	Ohm-m	0.914	8.726
Long	153.931	102.826		102.828	102.828	Ohm-m	0.659	35.059
IEE	245.260	7584.340	counts	0.268	8.300	A		
VSN	79.040	8633.620	counts	1.508	164.676	V		
VLN	106.040	2190.460	counts	2.023	41.780	V		

After Survey Verification

	Readings			References			Results	
	Zero	Cal		Zero	Cal		Gain	Offset
Short	28.273	101.325		28.684	101.321	Ohm-m	0.994	0.572
Long	152.477	102.843		102.826	102.826	Ohm-m	1.030	-3.065
IEE	249.140	7584.080	counts	0.273	8.300	A		
VSN	79.140	8633.680	counts	1.509	164.677	V		
VLN	106.700	2190.760	counts	2.035	41.786	V		

After Survey Verification compared to Before Survey Calibration

	Zero			Cal		
	Before	After		Before	After	
Short	34.937	28.684	Ohm-m	101.312	101.321	Ohm-m
Long	136.510	153.931	Ohm-m	102.828	102.826	Ohm-m

Gamma Ray Calibration Report

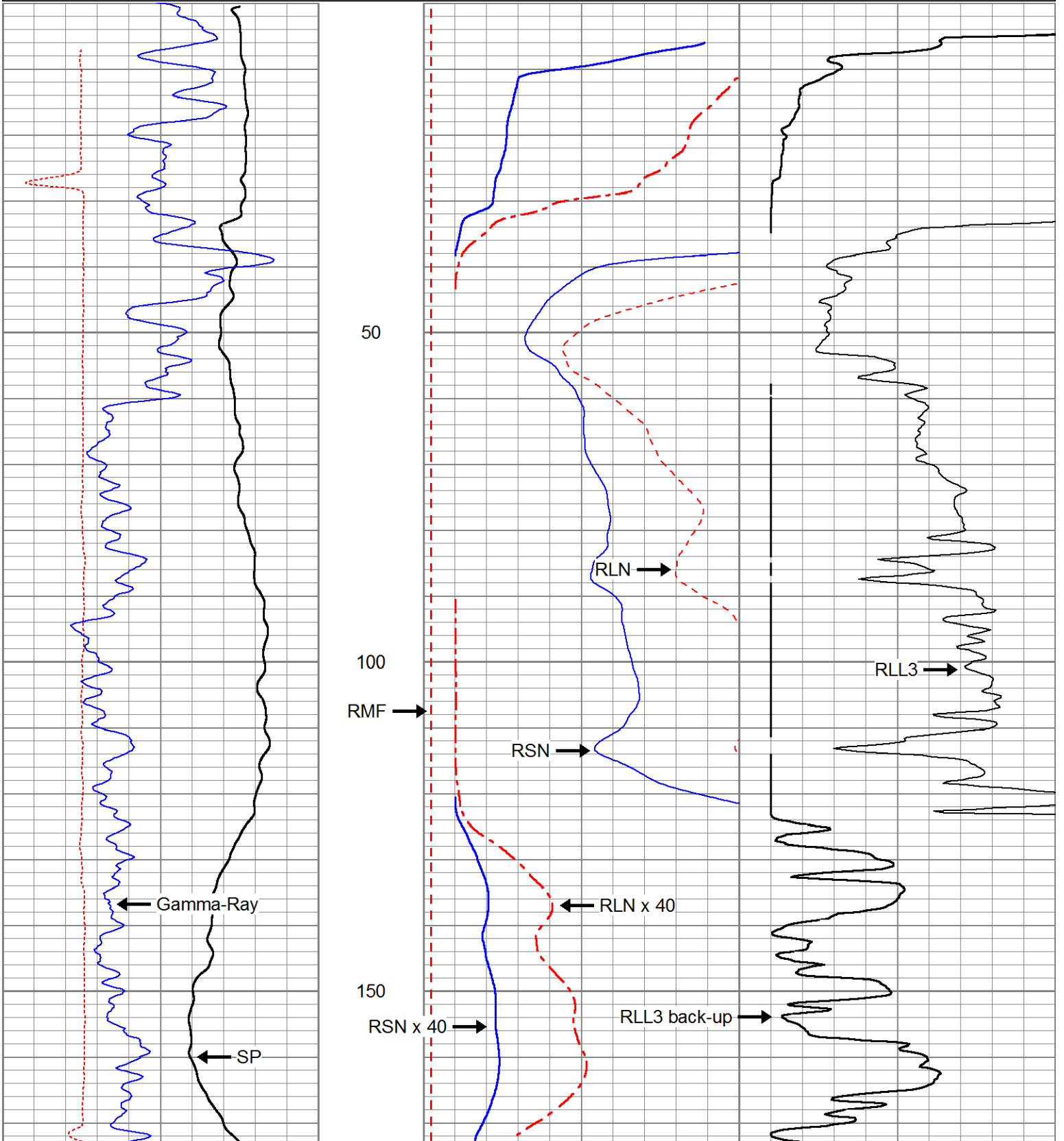
Serial Number: D4
 Tool Model: ELOG
 Performed: Sat Apr 09 12:21:07 2011
 Calibrator Value: 162.0 GAPI
 Background Reading: 212.4 cps
 Calibrator Reading: 707.5 cps
 Sensitivity: 0.3272 GAPI/cps

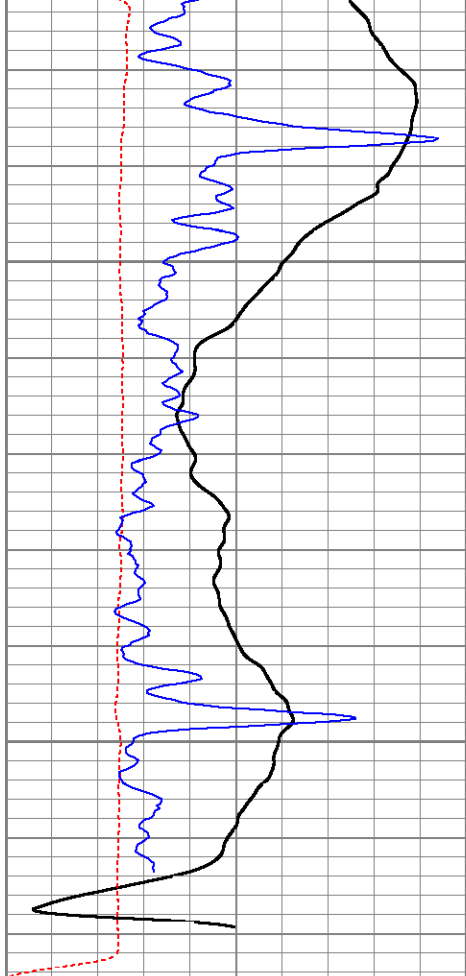
Database File 16808.db
 Dataset Pathname ELOG
 Presentation Format elog
 Dataset Creation Wed Oct 03 13:49:35 2012
 Charted by Depth in Feet scaled 1:240

-100	SP (mV)	100
0	Line Speed (ft/min)	-100
60	Gamma Ray (GAPI)	110

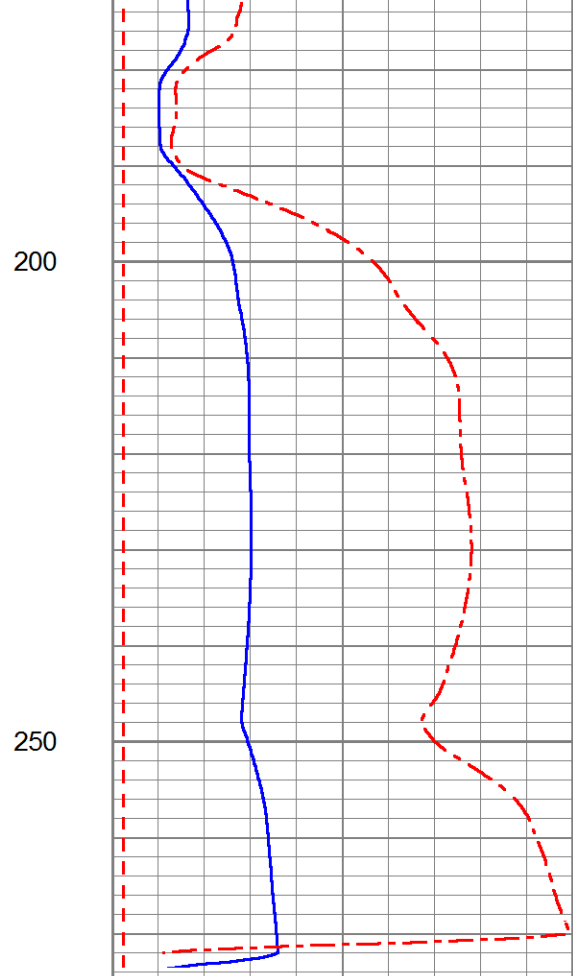
0	RSN (Ohm-m)	100
0	RLN (Ohm-m)	100
0	RMF (Ohm-m)	100
100	RSN x 40 (Ohm-m)	4000
100	RLN x 40 (Ohm-m)	4000

0	RLL3 (Ohm-m)	100
100	RLL3 back-up (Ohm-m)	20000

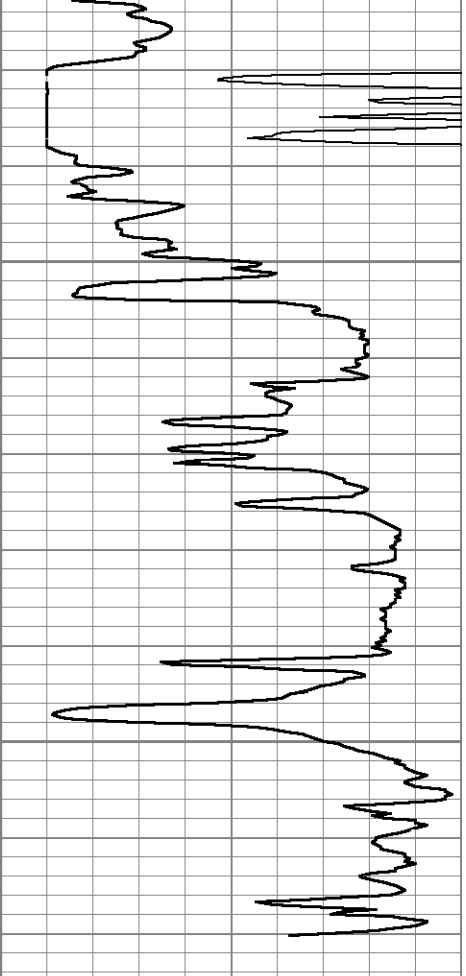




-100	SP (mV)	100
0	Line Speed (ft/min)	-100
60	Gamma Ray (GAPI)	110



0	RSN (Ohm-m)	100
0	RLN (Ohm-m)	100
0	RMF (Ohm-m)	100
100	RSN x 40 (Ohm-m)	4000
100	RLN x 40 (Ohm-m)	4000



0	RLL3 (Ohm-m)	100
100	RLL3 back-up (Ohm-m)	20000