

Job No. 16808
 Company U.S. GEOLOGICAL SURVEY
 Well SDLH
 Field ESCONDIDO
 County SAN DIEGO State CA

Location: 13455 SAN PASQUAL AVE
 GPS: N 33o 03.333' W 117o 02.781'
 Sec. Twp. Rge. Other Services: GRILL3 ELOG SONICVDL

| | | | |
|---------------------------|----------------|-------------------|----------------|
| Permanent Datum | G.L. | Elevation | Elevation |
| Log Measured From | G.L. | above perm. datum | K.B. D.F. G.L. |
| Drilling Measured From | G.L. | | |
| Date | 10-03-2012 | | |
| Run Number | ONE | | |
| Depth Driller | 275' | | |
| Depth Logger | 275' | | |
| Bottom Logged Interval | 271' | | |
| Top Log Interval | 0' | | |
| Casing Driller | N/A | | |
| Casing Logger | N/A | | |
| Bit Size | 9.875" TO 125' | 9.5" TO 130' | 7.875" TO 275' |
| Type Fluid in Hole | BENTONITE | | |
| Density / Viscosity | N/A | | |
| pH / Fluid Loss | N/A | | |
| Source of Sample | PIT | | |
| Rm @ Meas. Temp | 2.5 @ 91.4F | | |
| Rmf @ Meas. Temp | 3.4 @ 91.4F | | |
| Rmc @ Meas. Temp | N/A | | |
| Source of Rmf / Rmc | MEAS | | |
| Rm @ BHT | N/A | | |
| Time Circulation Stopped | 1230 | | |
| Time Logger on Bottom | 1430 | | |
| Max. Recorded Temperature | N/A | | |
| Equipment Number | PS-5 | | |
| Location | LA | | |
| Recorded By | SCHUMACHER | | |
| Witnessed By | J. NAWIKAS | | |

<<< Fold Here >>>

All interpretations are opinions based on inferences from electrical or other measurements and we cannot and do not guarantee the accuracy or correctness of any interpretation, and we shall not, except in the case of gross or willful negligence on our part, be liable or responsible for any loss, costs, damages, or expenses incurred or sustained by anyone resulting from any interpretation made by any of our officers, agents or employees. These interpretations are also subject to our general terms and conditions set out in our current Price Schedule.

Comments

Calibration Report

Database File 16808.db
 Dataset Pathname CAL/CAL.1
 Dataset Creation Wed Oct 03 16:13:31 2012

Temperature Calibration Report

Serial Number:
Tool Model:
Performed:

GRPH_SHORT
GRPH_CAL
Wed Oct 03 14:43:44 2012

| Point # | Reading | | Reference | |
|---------|---------|-----|-----------|------|
| 1 | 387.23 | cps | 2.00 | degF |
| 2 | 1015.80 | cps | 7.00 | degF |
| 3 | | cps | | degF |
| 4 | | cps | | degF |
| 5 | | cps | | degF |
| 6 | | cps | | degF |
| 7 | | cps | | degF |
| 8 | | cps | | degF |
| 9 | | cps | | degF |
| 10 | | cps | | degF |

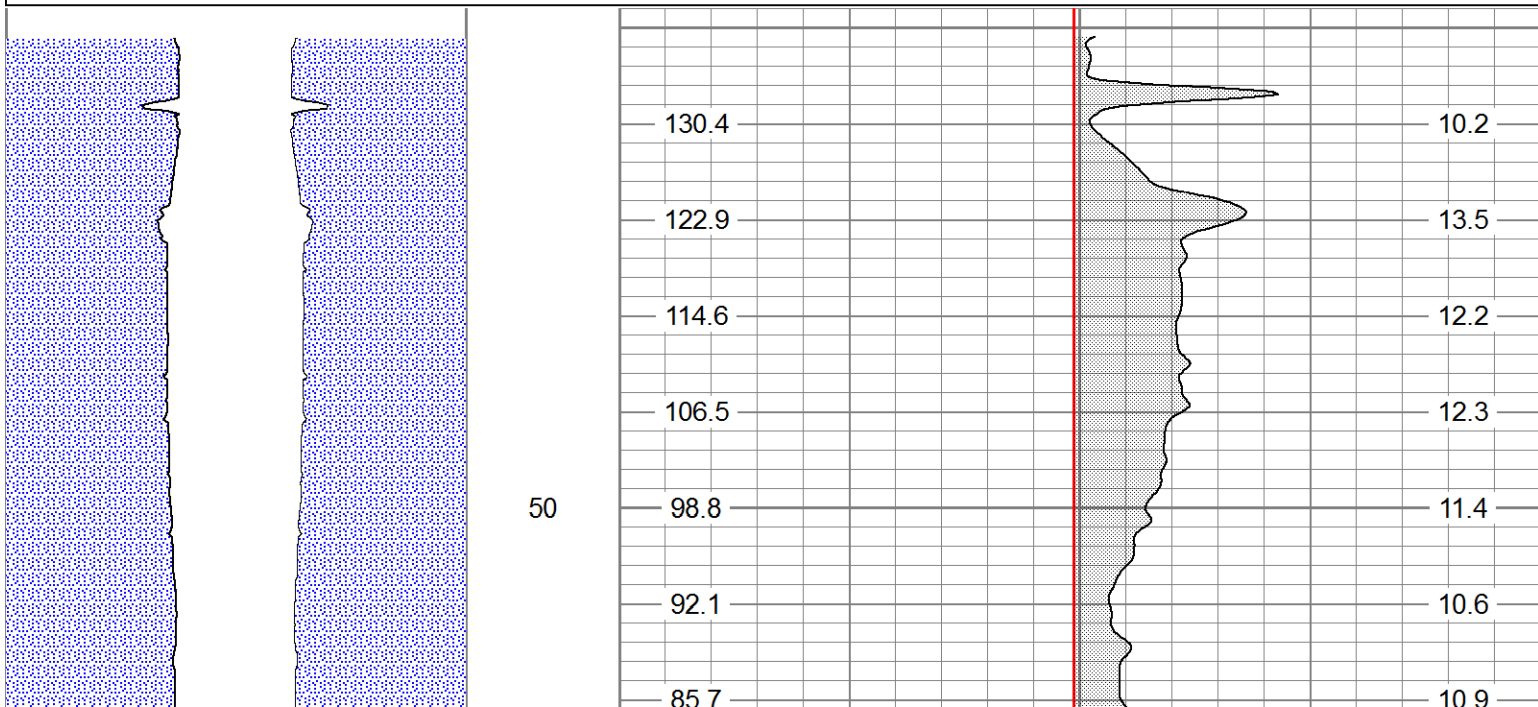
XY Caliper Calibration Report

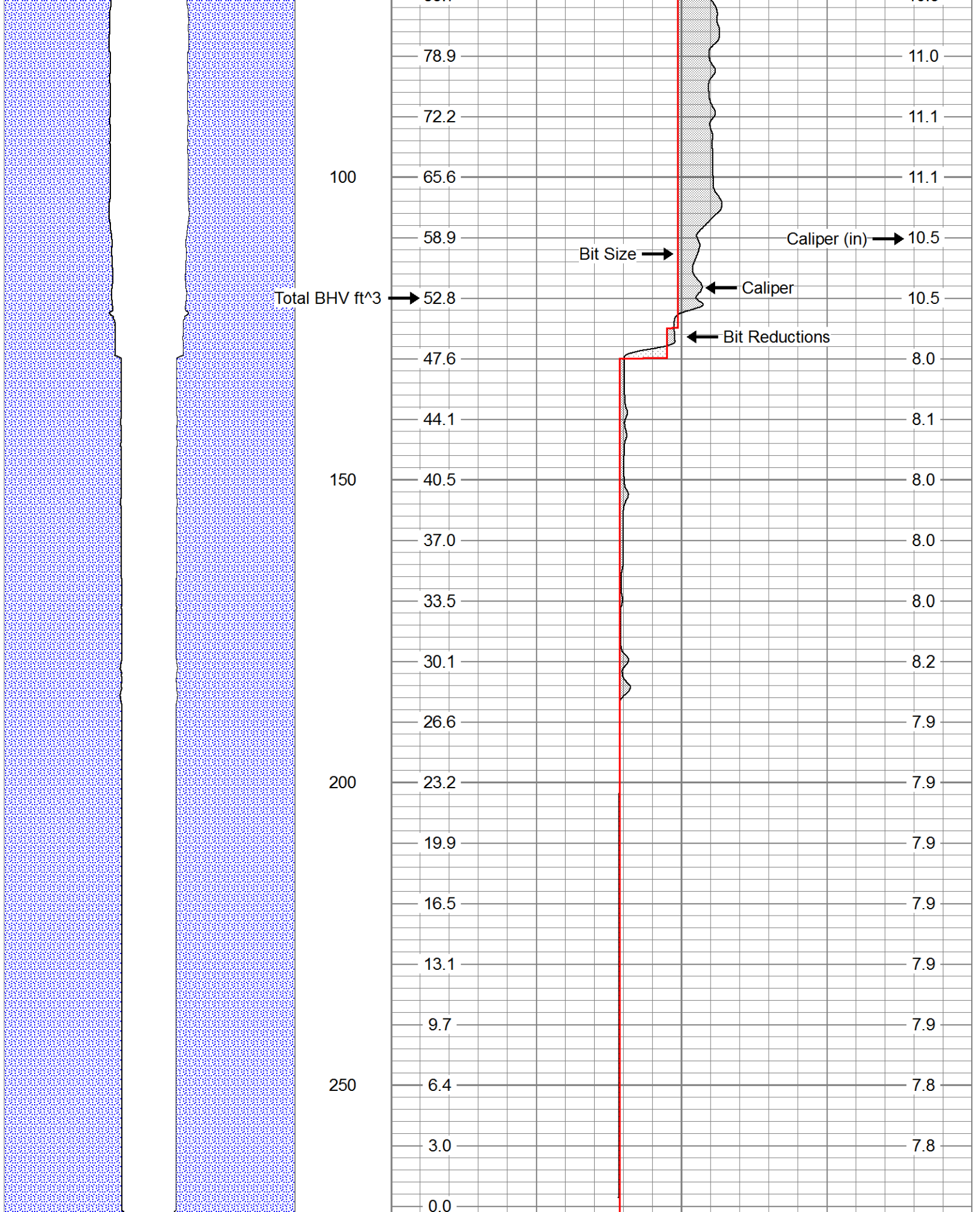
Serial Number/Model: PS-1_Short-Comprobe
Performed: Mon Sep 24 15:01:26 2012

| | Ring | | X Caliper | | Y Caliper | |
|----|------|----|-----------|-----|-----------|-----|
| 1: | 4 | in | 387.228 | cps | 387.22 | cps |
| 2: | 6 | in | 501.837 | cps | 501.837 | cps |
| 3: | 8 | in | 634.598 | cps | 634.598 | cps |
| 4: | 14 | in | 1015.8 | cps | 1015.8 | cps |
| 5: | 20 | in | 1402.99 | cps | 1402.99 | cps |
| 6: | | in | | cps | | cps |

Database File 16808.db
Dataset Pathname CAL/CAL.1
Presentation Format xyc_gph
Dataset Creation Wed Oct 03 16:13:31 2012
Charted by Depth in Feet scaled 1:240

| | | | |
|---|------------------------------------|---------------|--------------|
| CSG SCHEDULE Pipe(s) proportional to Hole Size | 0 | Caliper (in) | 20 |
| | 0 | Bit Size (in) | 20 |
| | total BHV ft ³ (ft3) | | Caliper (in) |





| | | | |
|-----------------------------------|---|---------------|--------------|
| CSG SCHEDULE | 0 | Caliper (in) | 20 |
| Pipe(s) proportional to Hole Size | 0 | Bit Size (in) | 20 |
| Total BHV ft ³ | | | Caliper (in) |

