

Job No. 16247	Company US GEOLOGICAL SURVEY
Well SDHF	
Field SAN DIEGO	
County SAN DIEGO	State CA
File No.	

Location:  
3917 FEDERAL BLVD  
GPS: N 32o 43.139' W 117o 06.587'

Sec. Twp. Rge. Other Services:  
GRILL3  
SNC  
CALIPER

Permanent Datum	G.L.	Elevation	
Log Measured From	G.L.	above perm. datum	
Drilling Measured From	G.L.		K.B. D.F. G.L.
Date	11-05-2011		
Run Number	ONE		
Depth Driller	1640'		
Depth Logger	1640'		
Bottom Logged Interval	1640'		
Top Log Interval	0'		
Casing Driller	N/A		
Casing Logger	N/A		
Bit Size	8.75" TO 480'	8.5" TO 990'	7.875" TO 1640'
Type Fluid in Hole	BENTONITE		
Density / Viscosity	N/A		
pH / Fluid Loss	N/A		
Source of Sample	PIT		
Rm @ Meas. Temp	4.8 @ 77F		
Rmf @ Meas. Temp	5.9 @ 77F		
Rmc @ Meas. Temp	N/A		
Source of Rmf / Rmc	MEASURE		
Rm @ BHT	N/A		
Time Circulation Stopped	2.5 HRS		
Time Logger on Bottom	1845		
Max. Recorded Temperature	N/A		
Equipment Number	PS-3		
Location	LA		
Recorded By	SCHUMACHER		
Witnessed By	A. BROWN		

<<< Fold Here >>>

All interpretations are opinions based on inferences from electrical or other measurements and we cannot and do not guarantee the accuracy or correctness of any interpretation, and we shall not, except in the case of gross or willful negligence on our part, be liable or responsible for any loss, costs, damages, or expenses incurred or sustained by anyone resulting from any interpretation made by any of our officers, agents or employees. These interpretations are also subject to our general terms and conditions set out in our current Price Schedule.

Comments

Calibration Report

Database File: 16247.db  
 Dataset Pathname: ELOG.1  
 Dataset Creation: Sat Nov 05 20:18:18 2011 by Calc Open-Cased 090629

Serial: D4  
Model: DTQ

Shop Calibration Performed: Fri Sep 02 15:34:18 2011  
Before Survey Verification Performed: Sun Sep 09 13:17:43 2007  
After Survey Verification Performed: Sun Sep 09 13:17:48 2007

### Shop Calibration

	Readings		References			Results	
	Zero	Cal	Zero	Cal		Gain	Offset
Short	9.321	100.380	10.200	102.200	Ohm-m	1.010	0.782
Long	8.948	97.855	10.200	102.200	Ohm-m	1.035	-9.100
IEE		counts			A		
VSN		counts			V		
VLN		counts			V		

### Before Survey Verification

	Readings		References			Results	
	Zero	Cal	Zero	Cal		Gain	Offset
Short	40.249	101.201	40.505	101.206	Ohm-m	0.996	0.422
Long	142.638	102.842	102.858	102.858	Ohm-m	1.024	-2.408
IEE		counts			A		
VSN		counts			V		
VLN		counts			V		

### After Survey Verification

	Readings		References			Results	
	Zero	Cal	Zero	Cal		Gain	Offset
Short	40.270	101.200	40.249	101.201	Ohm-m	1.000	-0.035
Long	142.491	102.843	102.842	102.842	Ohm-m	1.004	-0.383
IEE		counts			A		
VSN		counts			V		
VLN		counts			V		

### After Survey Verification compared to Before Survey Calibration

	Zero			Cal		
	Before	After		Before	After	
Short	40.505	40.249	Ohm-m	101.206	101.201	Ohm-m
Long	143.592	142.638	Ohm-m	102.858	102.842	Ohm-m

### Gamma Ray Calibration Report

Serial Number: D4  
Tool Model: ELOG  
Performed: Tue Jul 15 15:58:21 2008

Calibrator Value: 162.0 GAPI

Background Reading: 198.6 cps  
Calibrator Reading: 742.0 cps

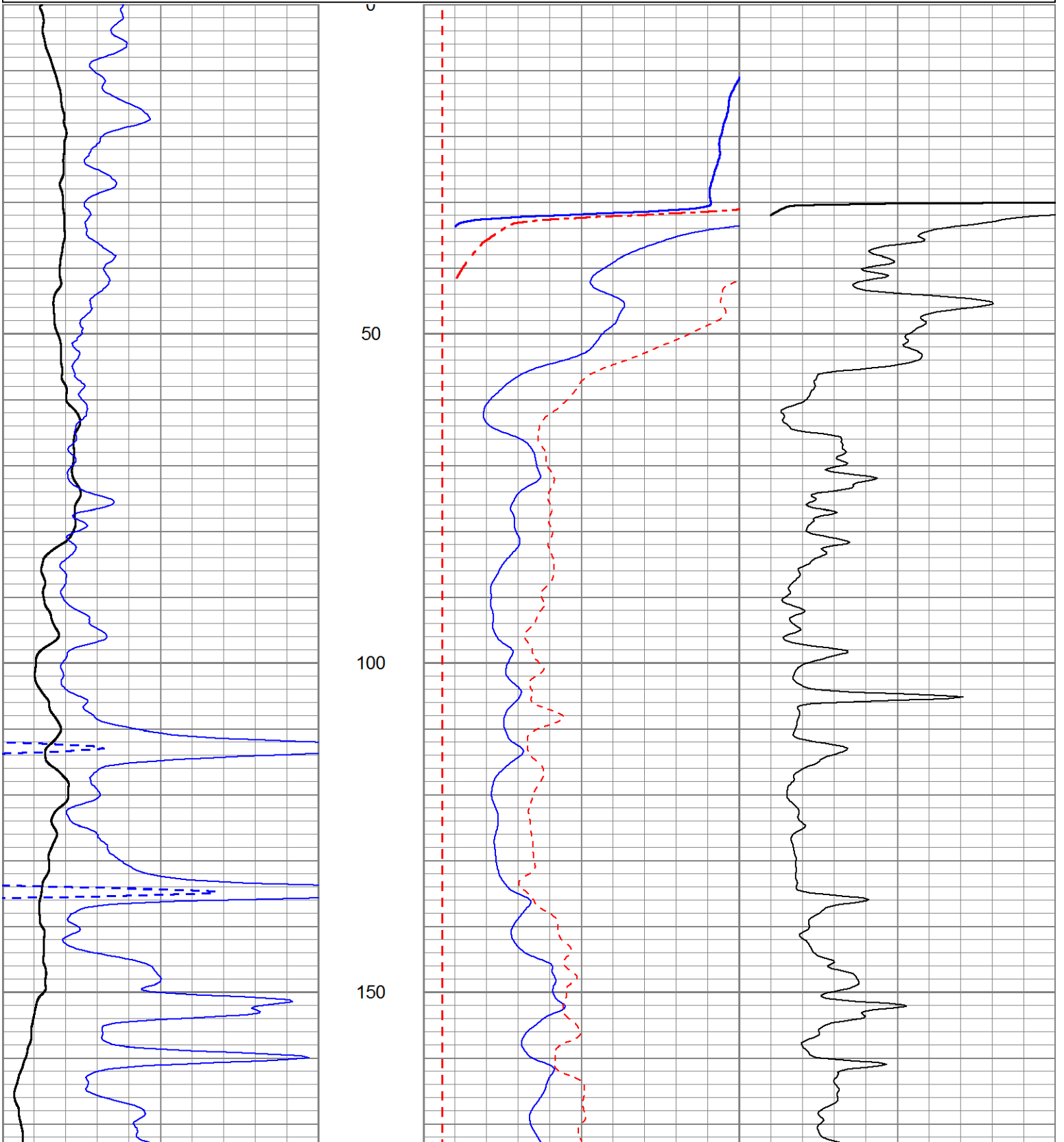
Sensitivity: 0.2982 GAPI/cps

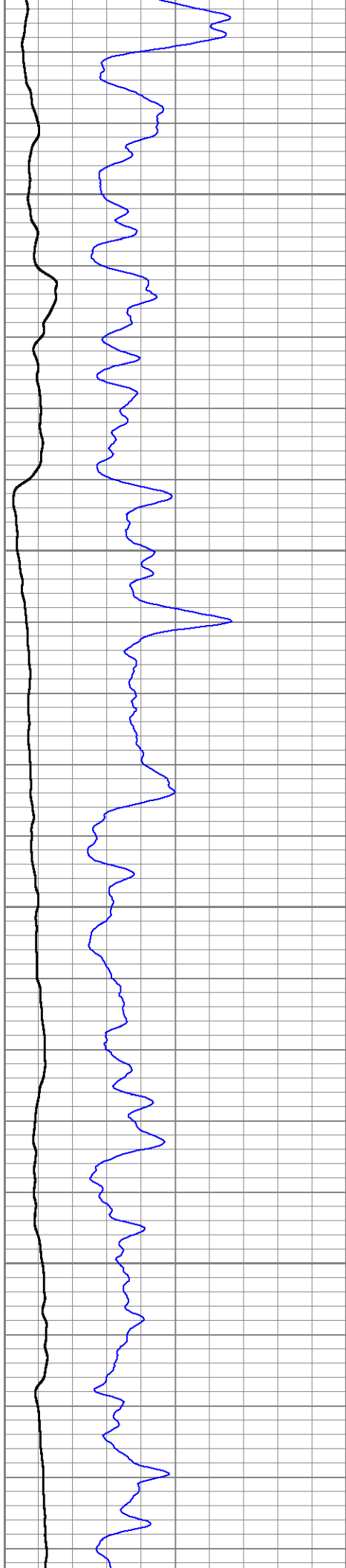
Database File: 16247.db  
 Dataset Pathname: ELOG.1  
 Presentation Format: elog  
 Dataset Creation: Sat Nov 05 20:18:18 2011 by Calc Open-Cased 090629  
 Charted by: Depth in Feet scaled 1:240

-160	SP (mV)	-40
0	Gamma-Ray (GAPI)	200
200	GR Back-up (GAPI)	400

0	RSN (Ohm-m)	100
0	RLN (Ohm-m)	100
0	RMF (Ohm-m)	100
100	RSN x 10 (Ohm-m)	1000
100	RLN x 10 (Ohm-m)	1000

0	RLL3 (Ohm-m)	100
100	RLL3 back-up (Ohm-m)	1000



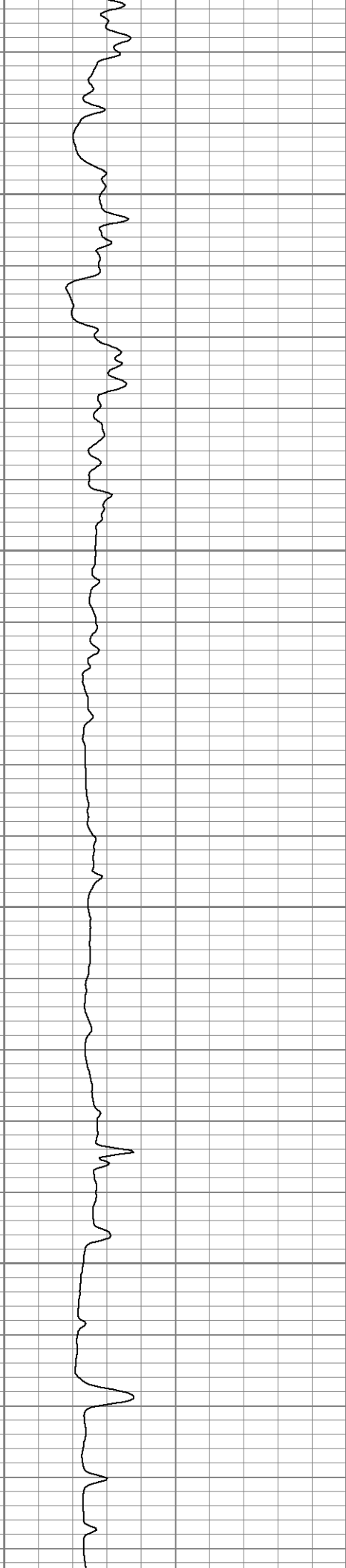
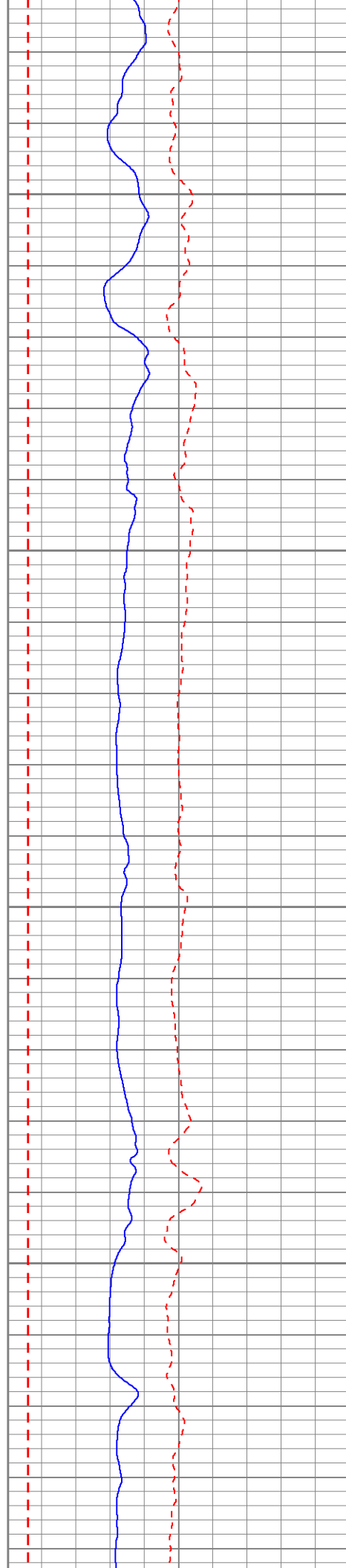


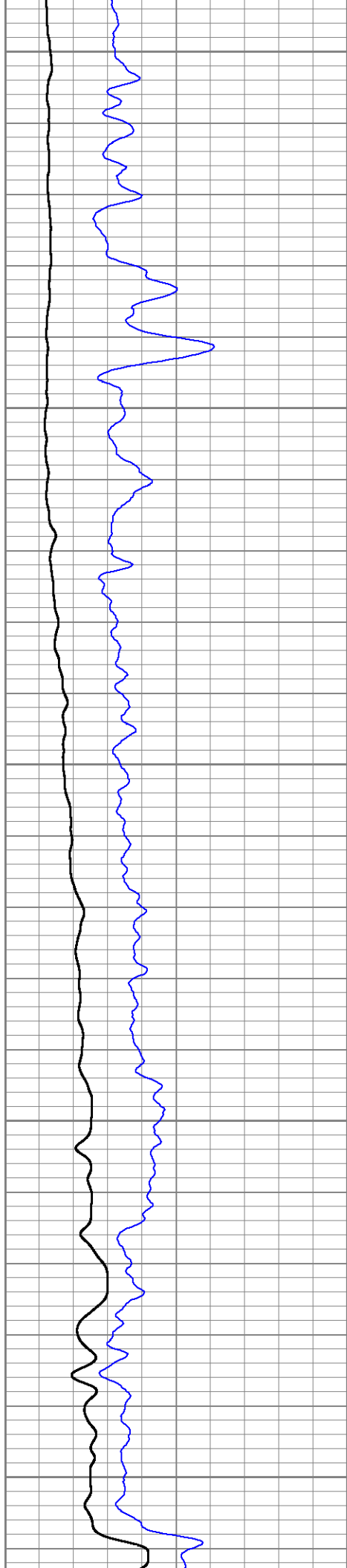
200

250

300

350





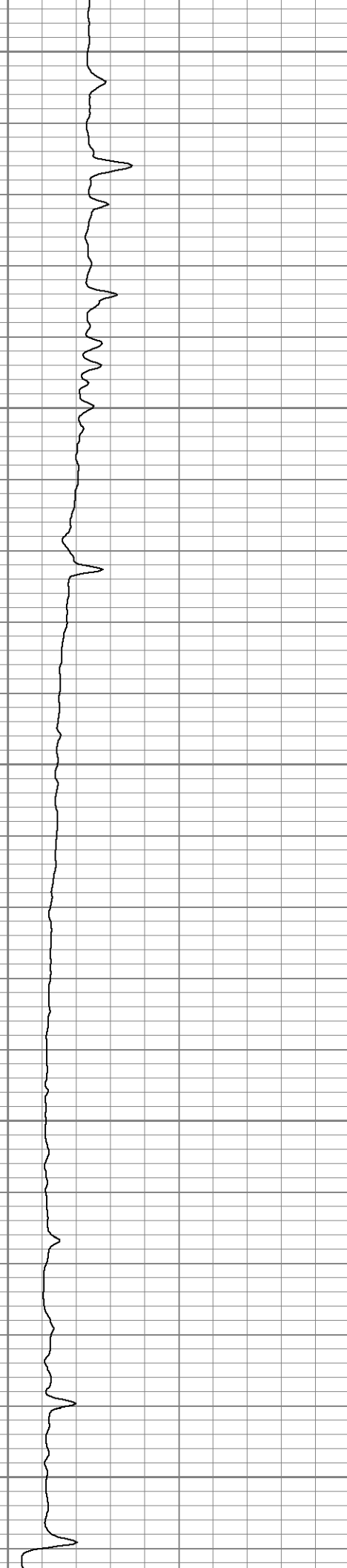
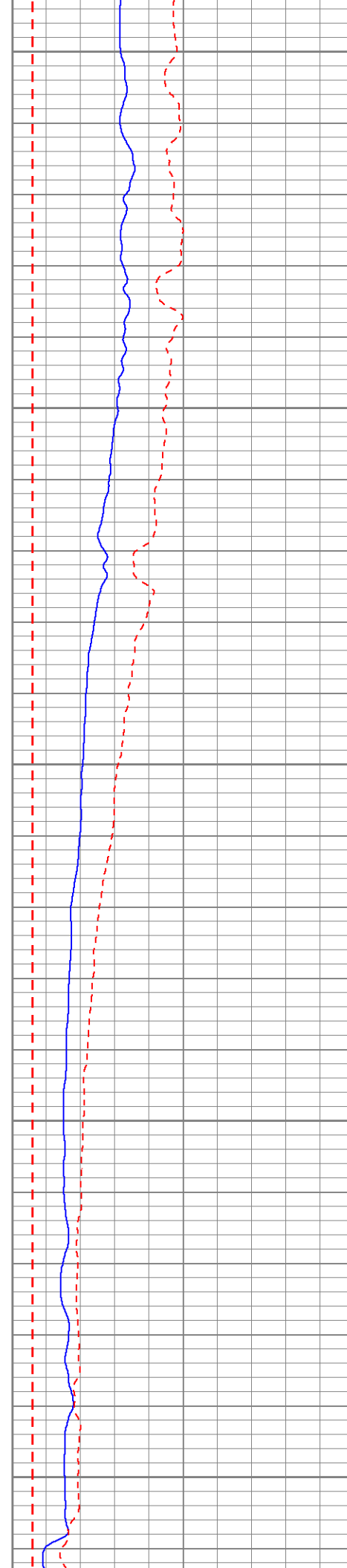
400

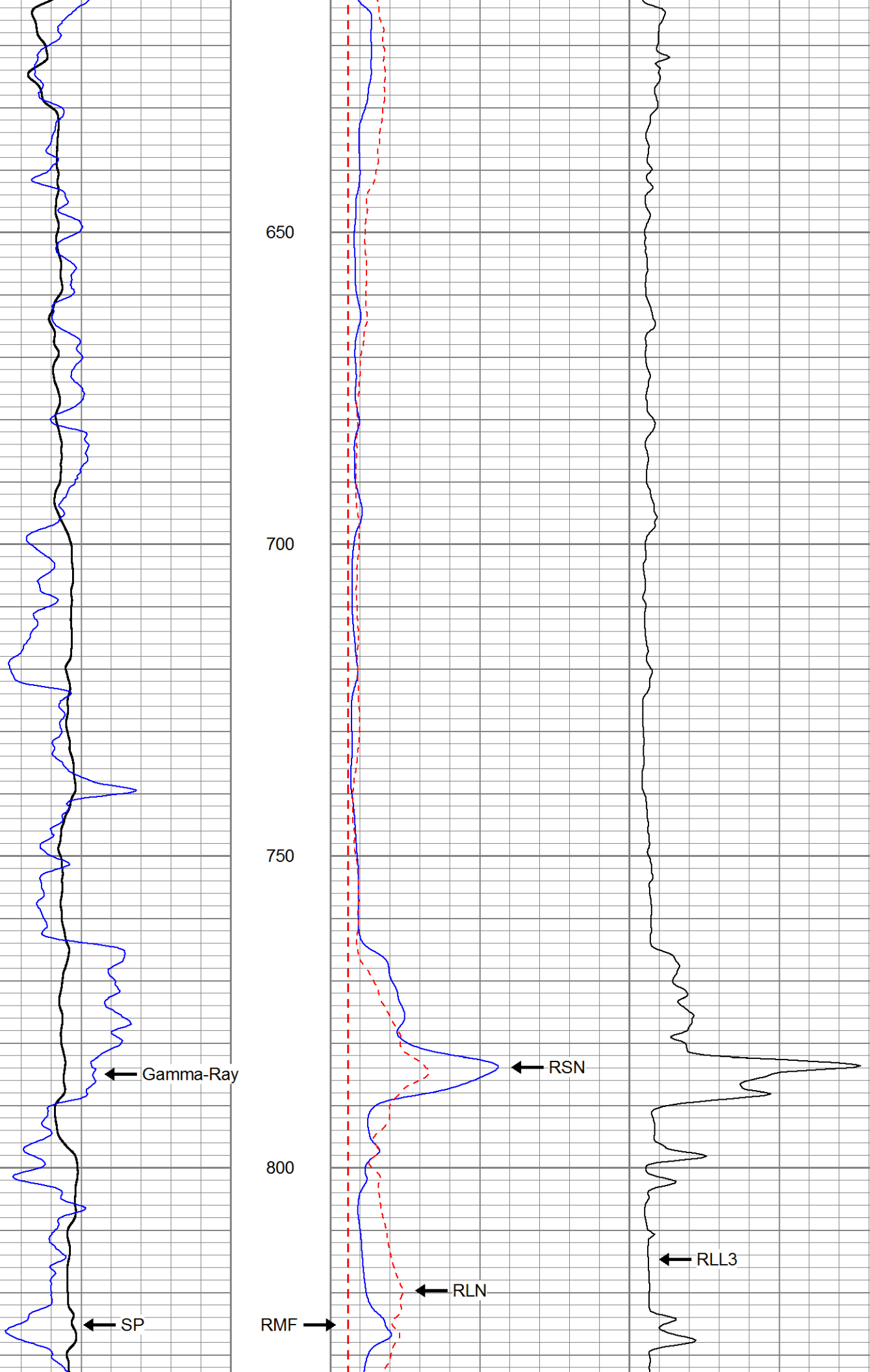
450

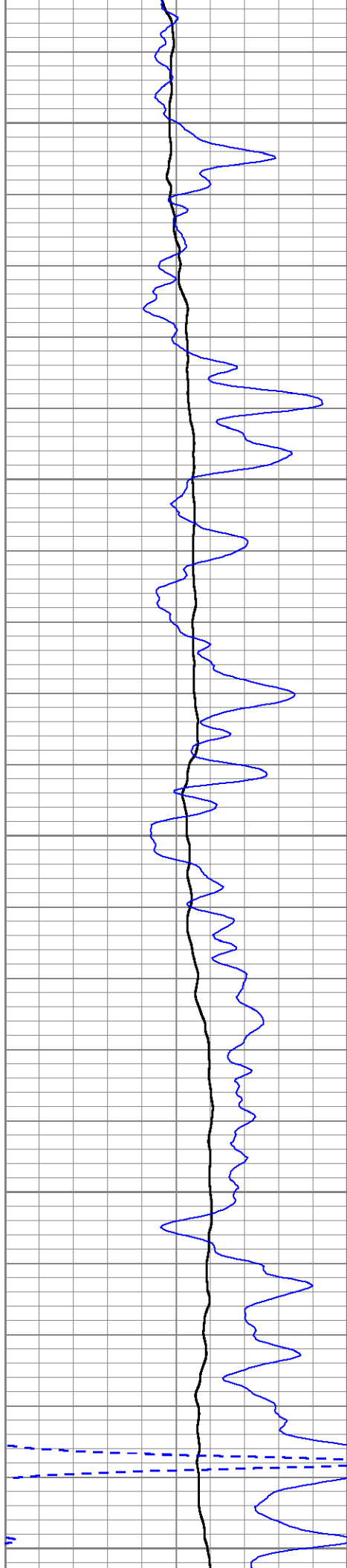
500

550

600







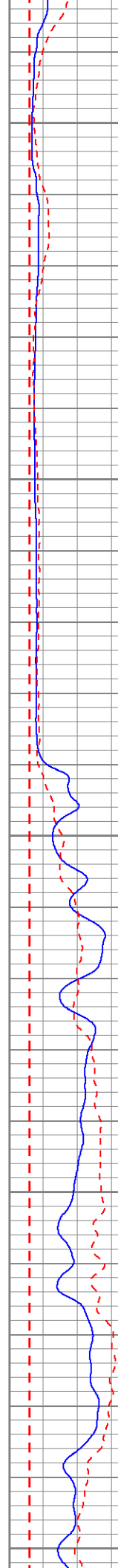
850

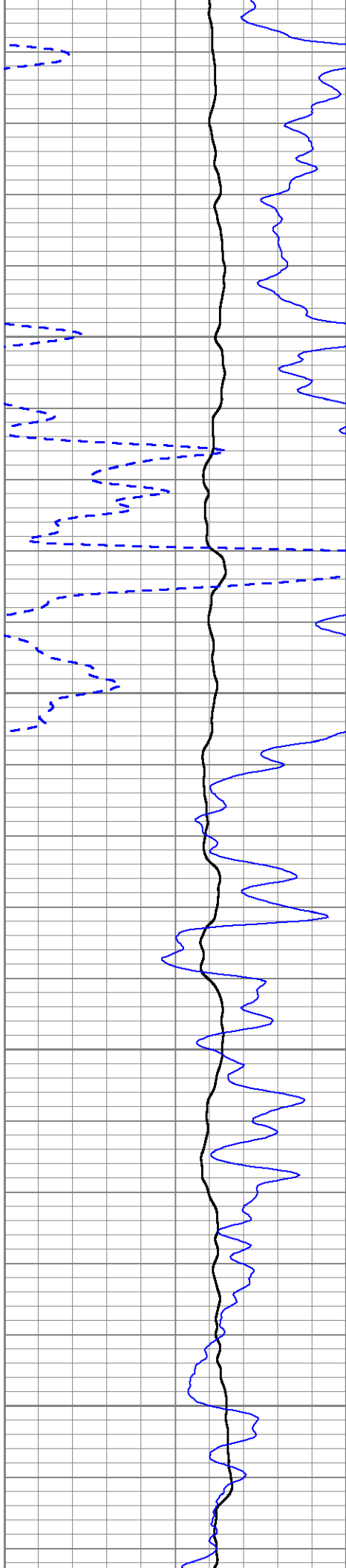
900

950

1000

1050



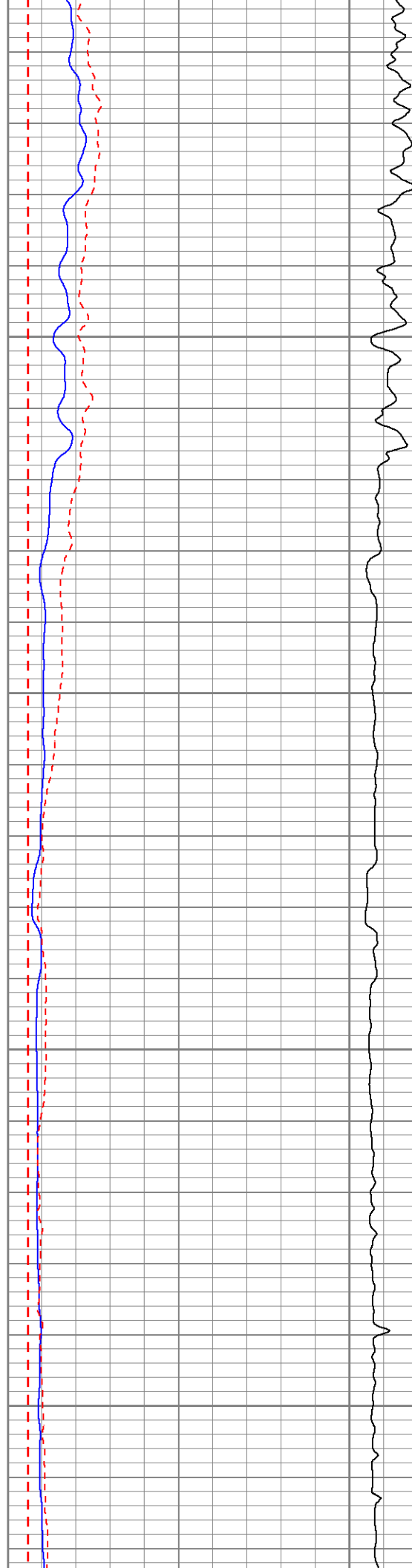


1100

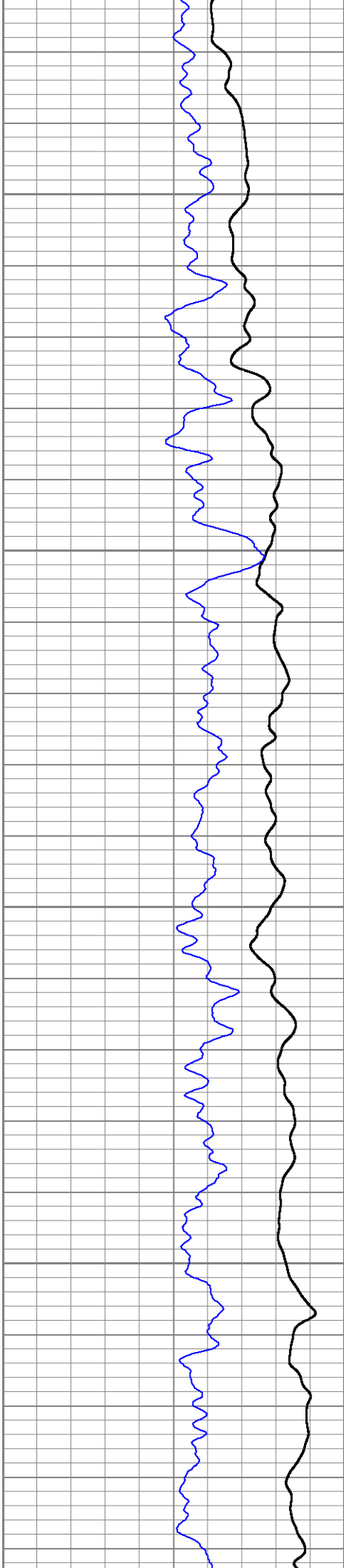
1150

1200

1250







1300

1350

1400

1450

