

Job No. 13681	Company U.S.G.S.
Well SDBP	
Field SAN DIEGO	
County SAN DIEGO	State CA
File No.	

Location: CITY YARD (26th ST)	Twp. Rge.	Other Services: E-LOG GRILL3 CALIPER
----------------------------------	--------------	---

Permanent Datum	G.L.	Elevation above perm. datum	Elevation K.B. D.F. G.L.
Log Measured From	G.L.		
Drilling Measured From	G.L.		
Date	1-30-08		
Run Number	ONE		
Depth Driller	1498'		
Depth Logger	1244'		
Bottom Logged Interval	1243'		
Top Log Interval	35'		
Casing Driller	N/A		
Casing Logger	N/A		
Bit Size	SEE COMMENTS		
Type Fluid in Hole	BENTONITE		
Density / Viscosity	N/A		
pH / Fluid Loss	N/A		
Source of Sample	PIT		
Rm @ Meas. Temp	5.1 @ 77F		
Rmf @ Meas. Temp	5.4 @ 77F		
Rmc @ Meas. Temp	N/A		
Source of Rmf / Rmc	MEAS		
Rm @ BHT	N/A		
Time Circulation Stopped	3:00 PM		
Time Logger on Bottom	6:20 PM		
Max. Recorded Temperature	N/A		
Equipment Number	PS-2		
Location	L.A.		
Recorded By	LAPORTE		
Witnessed By	TONY		

<<< Fold Here >>>

All interpretations are opinions based on inferences from electrical or other measurements and we cannot and do not guarantee the accuracy or correctness of any interpretation, and we shall not, except in the case of gross or willful negligence on our part, be liable or responsible for any loss, costs, damages, or expenses incurred or sustained by anyone resulting from any interpretation made by any of our officers, agents or employees. These interpretations are also subject to our general terms and conditions set out in our current Price Schedule.

Comments

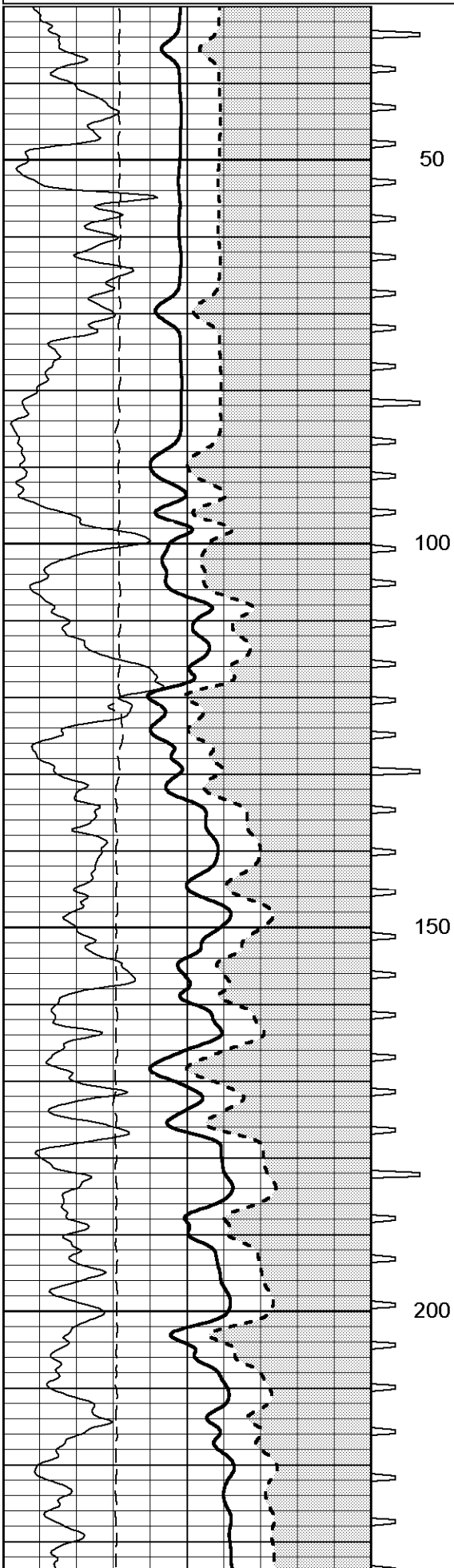
BIT SIZES:
 0-60'= 14.75"
 60-400'= 12.25"
 400-960'= 9.875"
 960-1052'= 8.5"
 1052-1498'= 7.875"

Database File: 13681.db
 Dataset Pathname: USGS/SanDiego/run1/SNC
 Presentation Format: SLT
 Dataset Creation: Wed Jan 30 20:50:48 2008 by Log 6.0
 Charted by: Depth in Feet scaled 1:240

350	DT (usec/ft)	50	ITT (msec)	500	Variable Density 5 ft	1600	500	Variable Density 5ft	1600
60	SPOR (mU)	0		0	RI 1.3 (Ohm-m)	50			

0	Line Speed (ft/min)	100
40	GR (GAPI)	240

REELS (CHINA W)

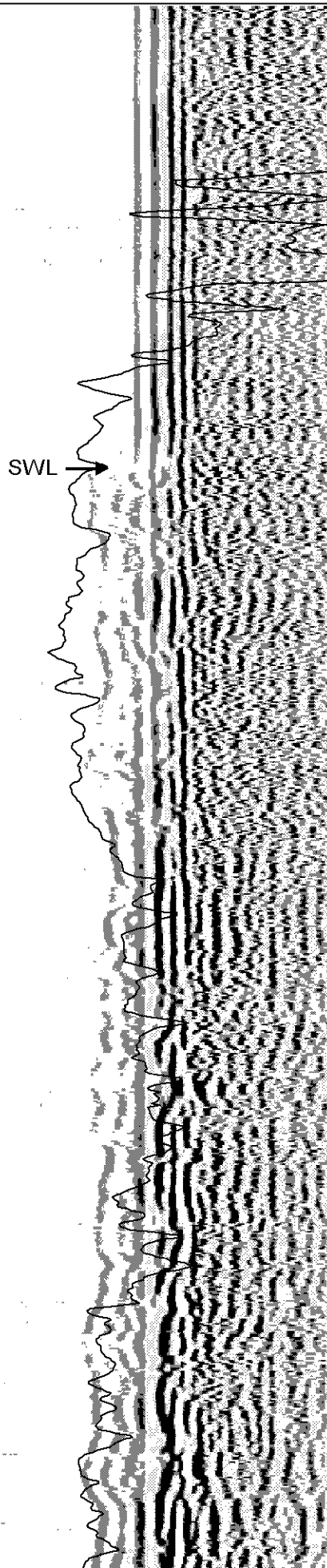


50

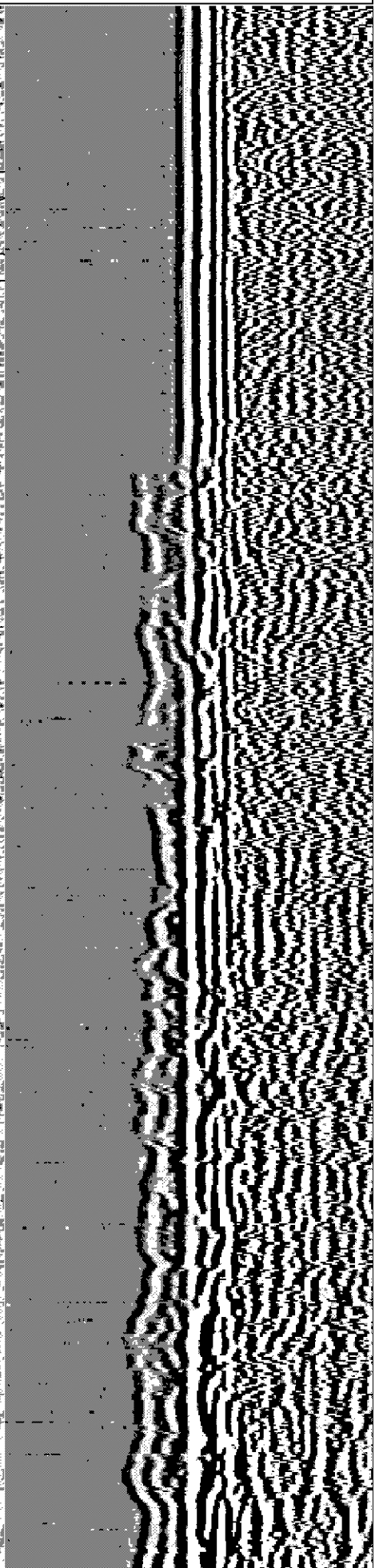
100

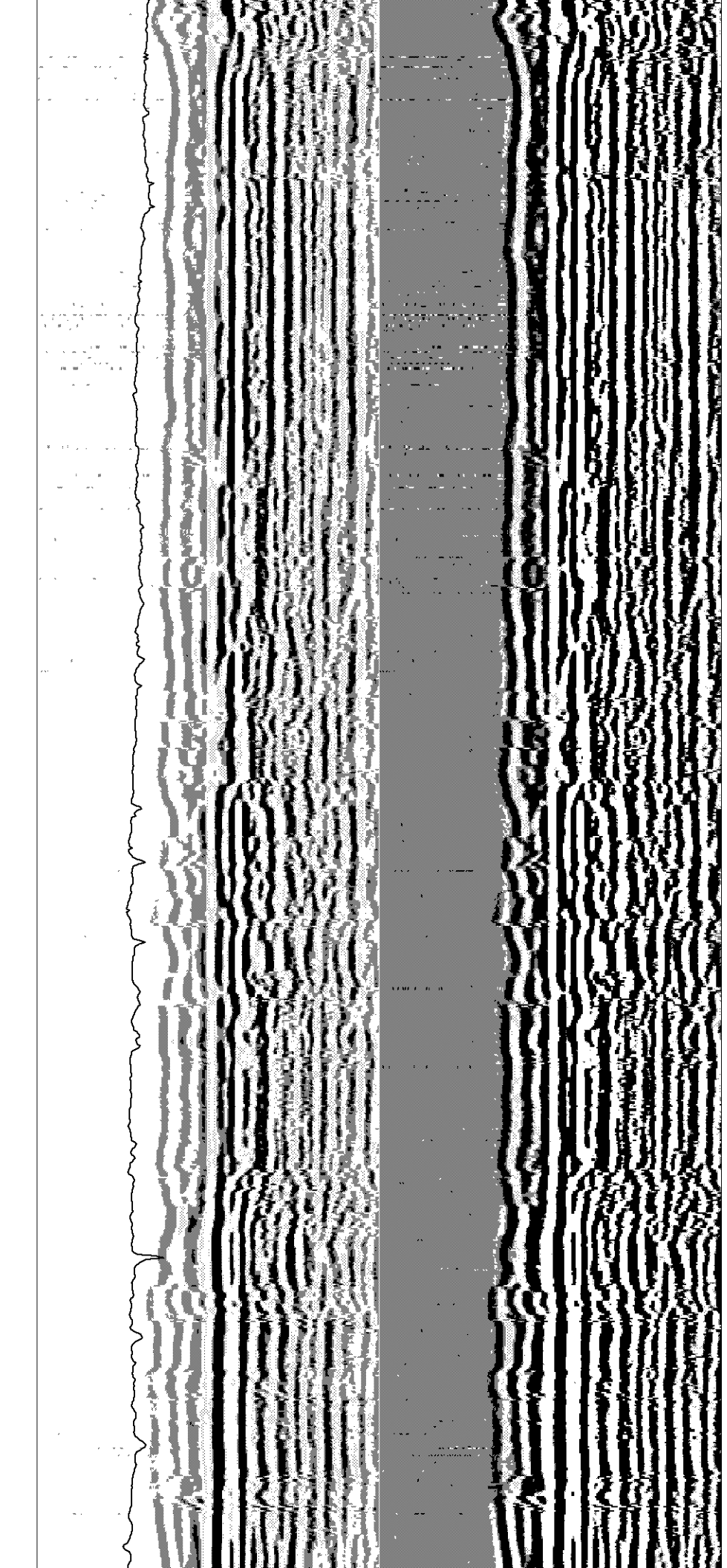
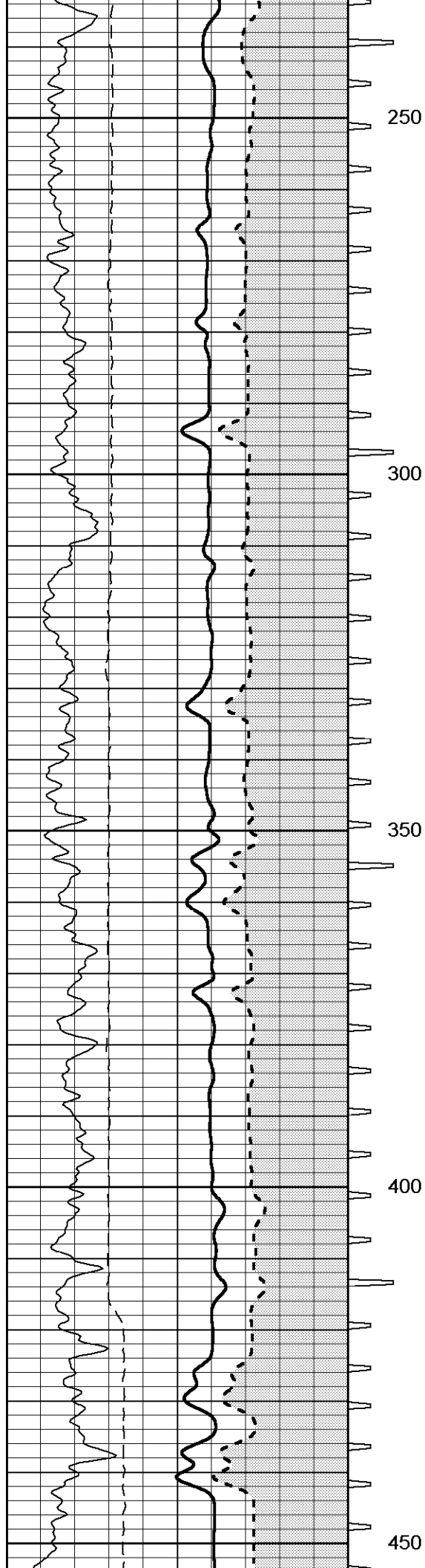
150

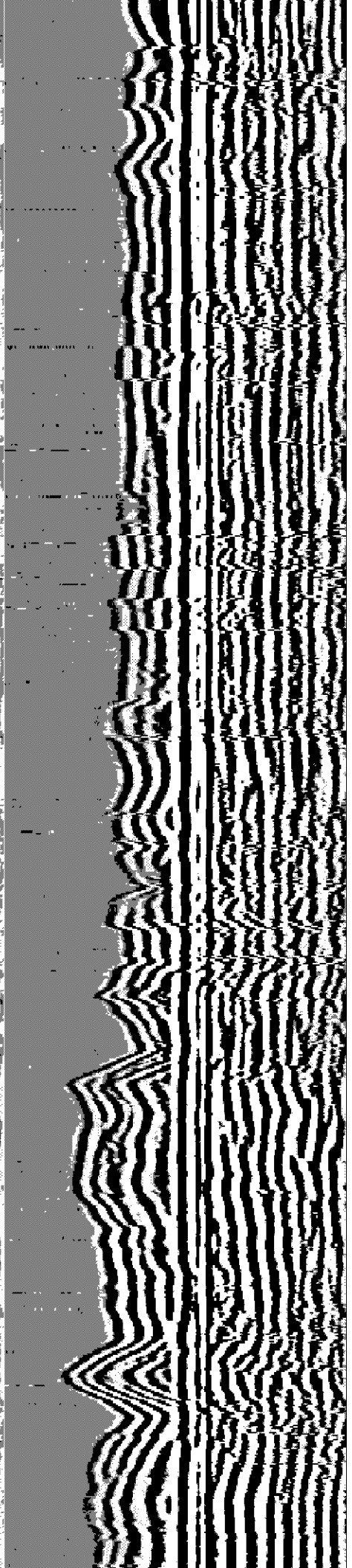
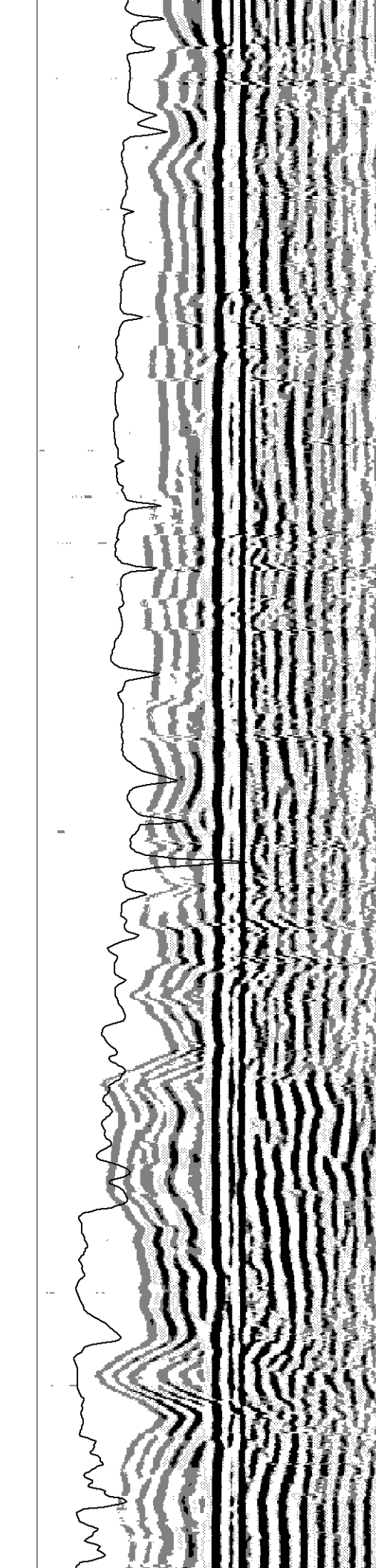
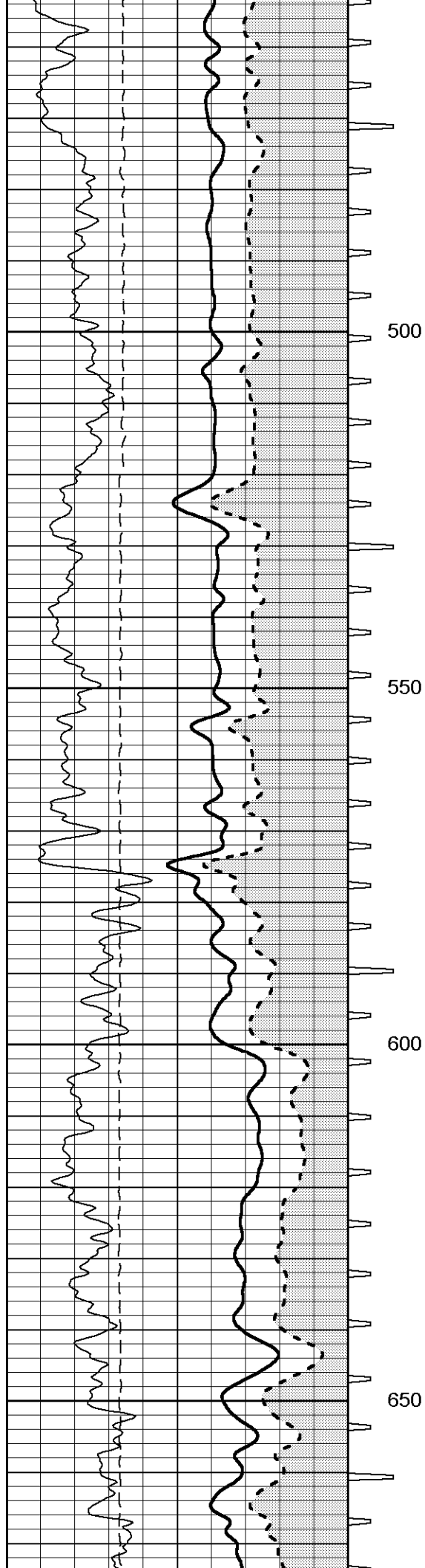
200

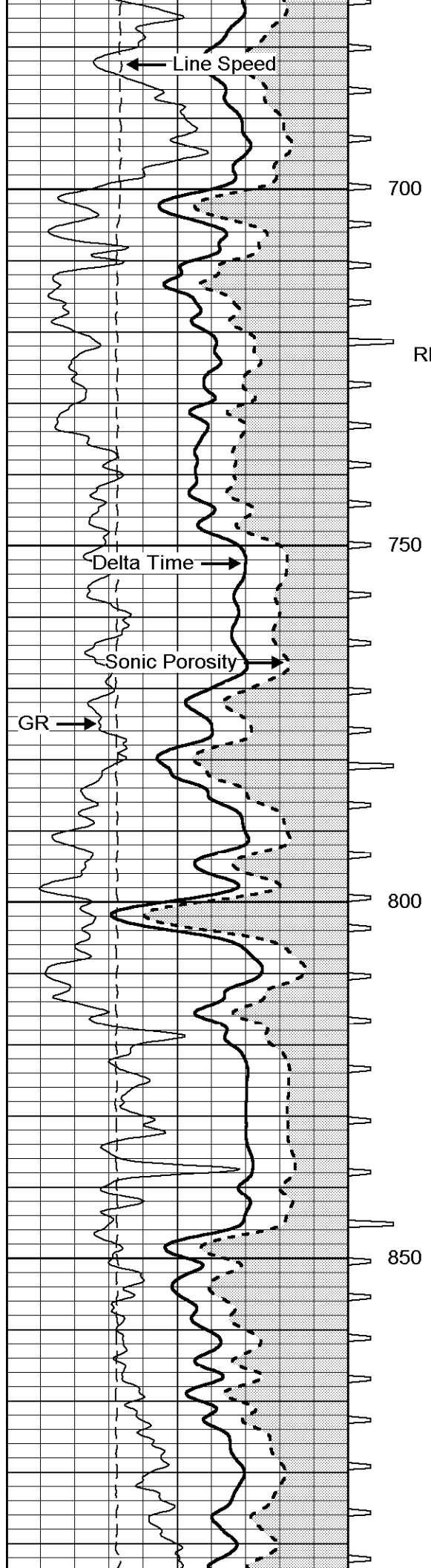


SWL









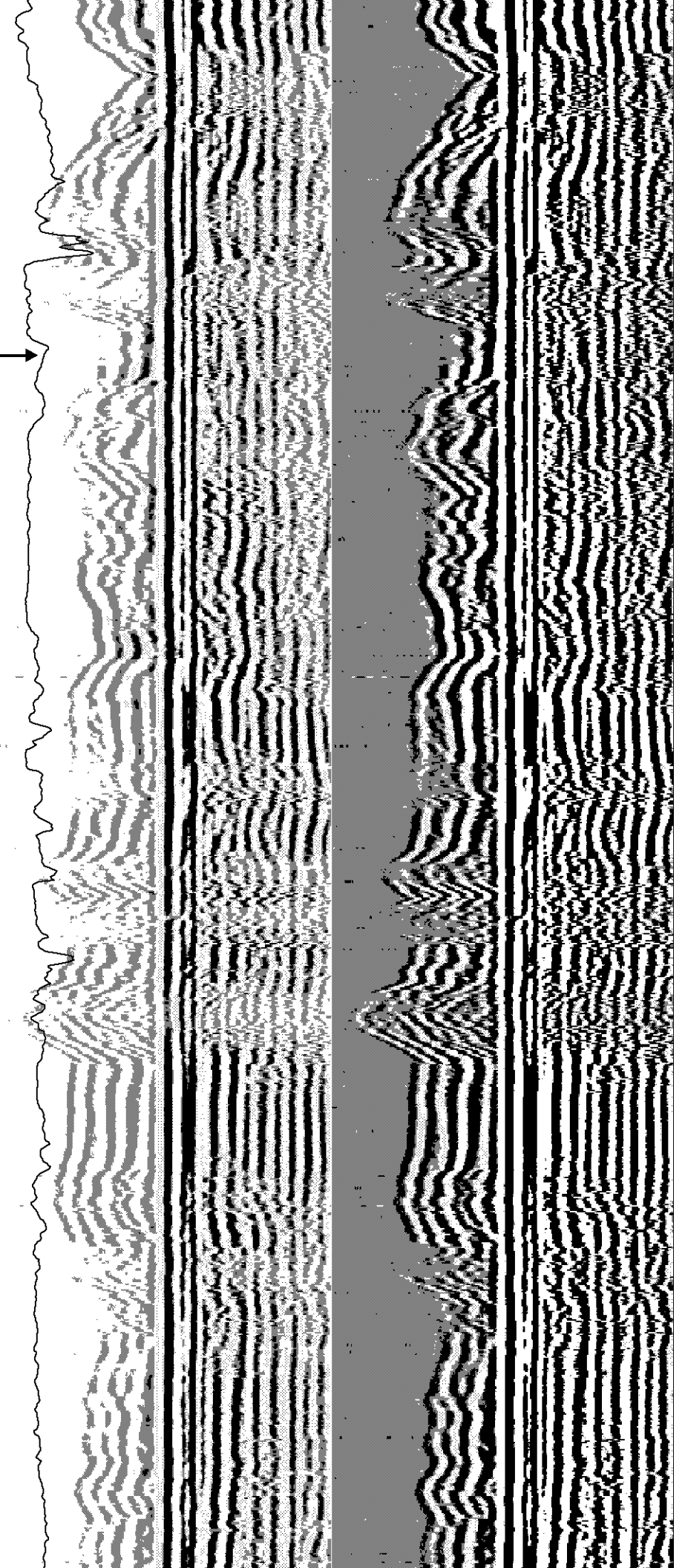
700

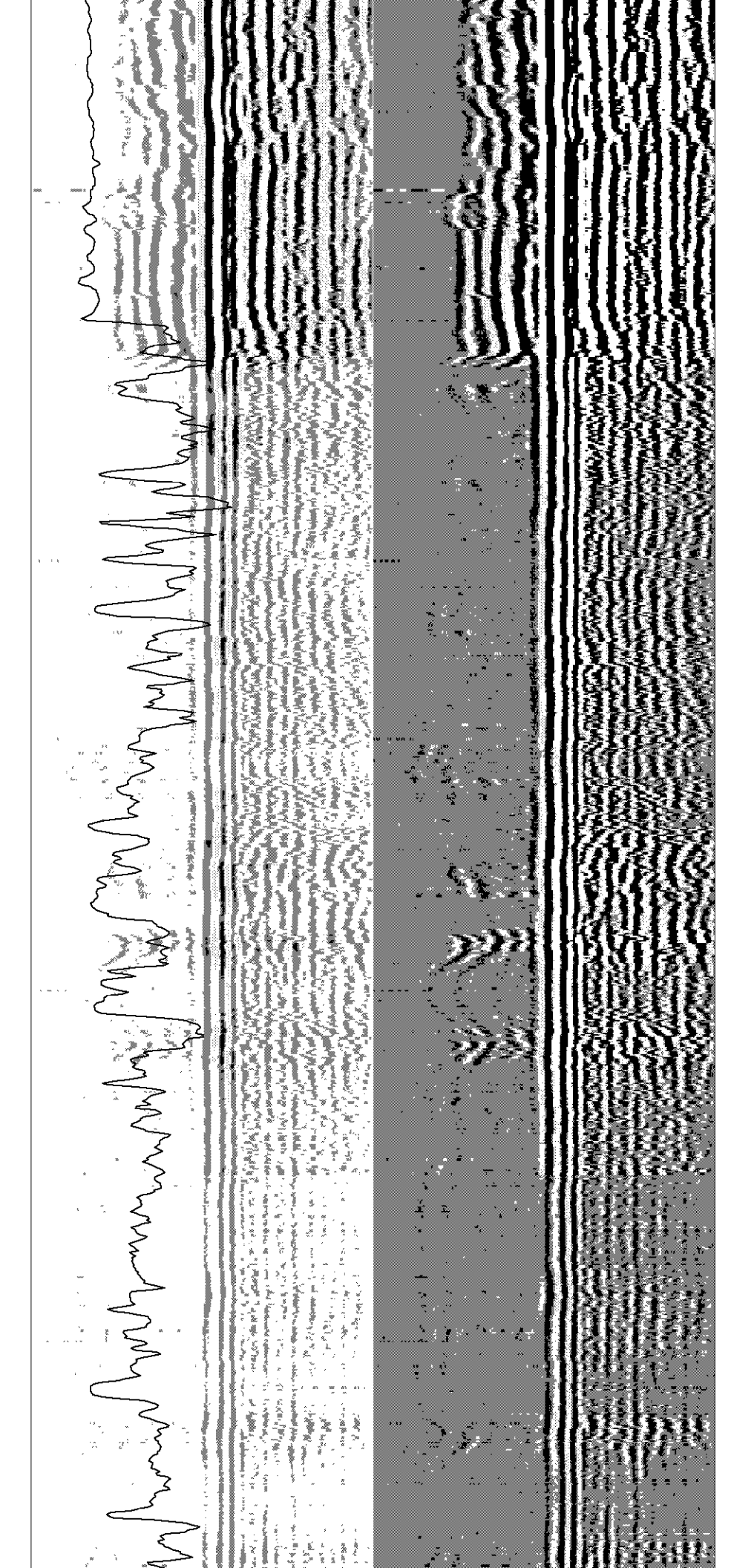
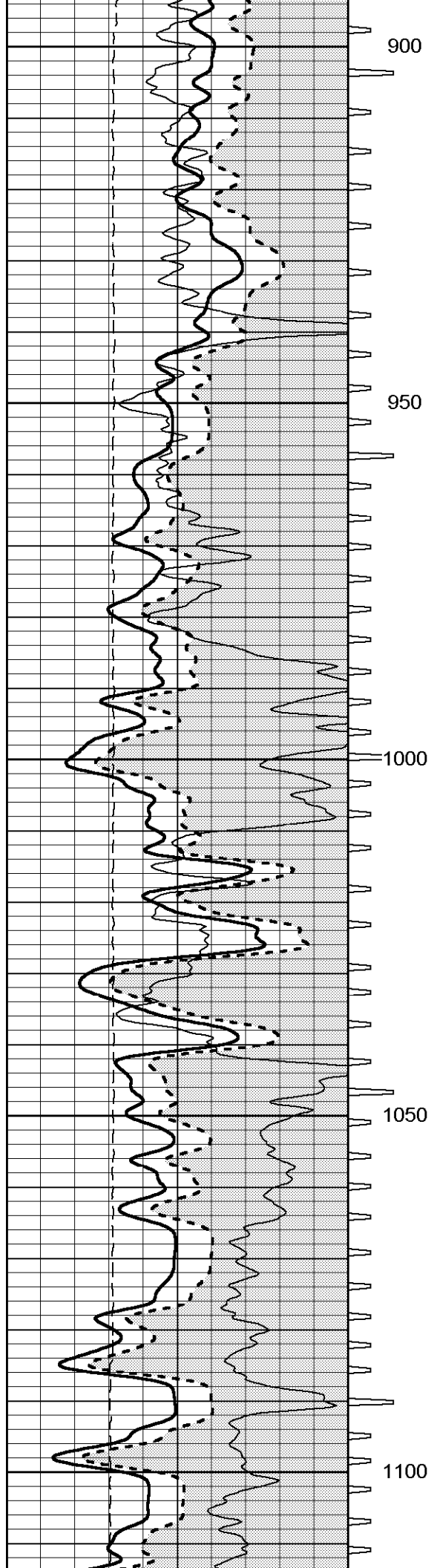
750

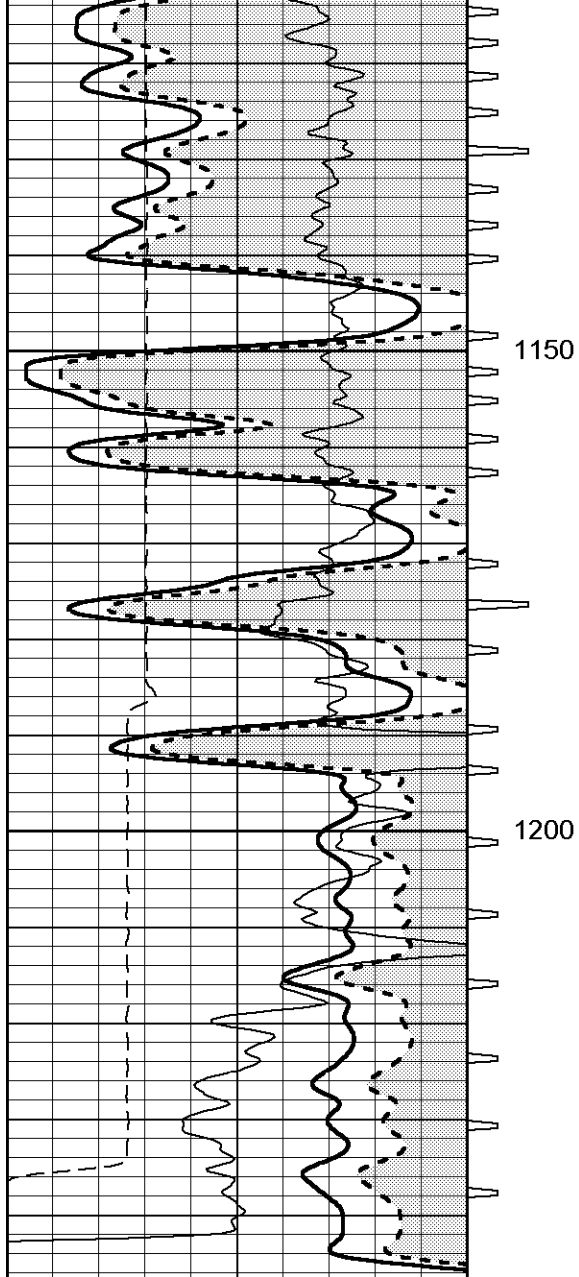
800

850

RLL3





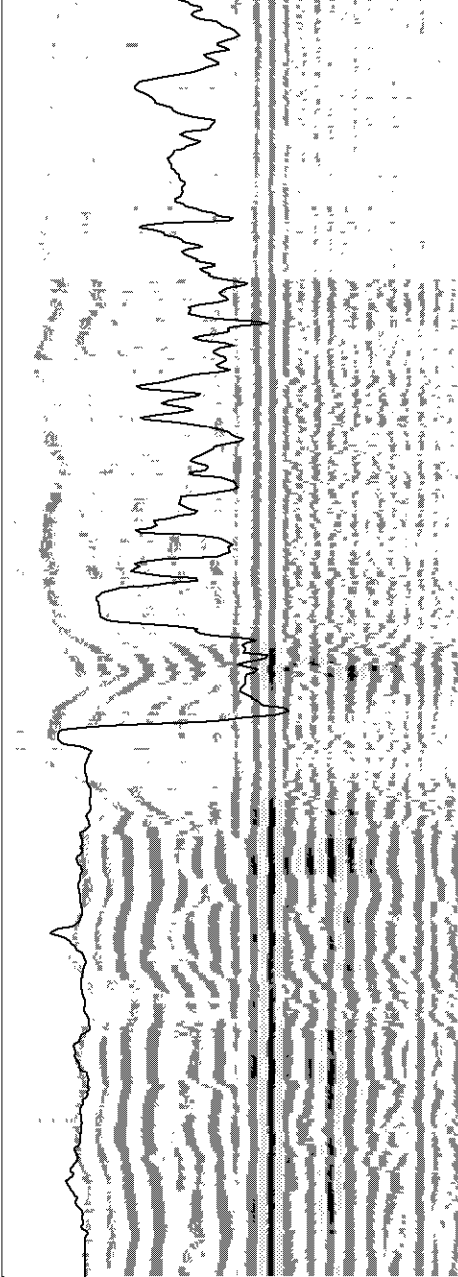


1150

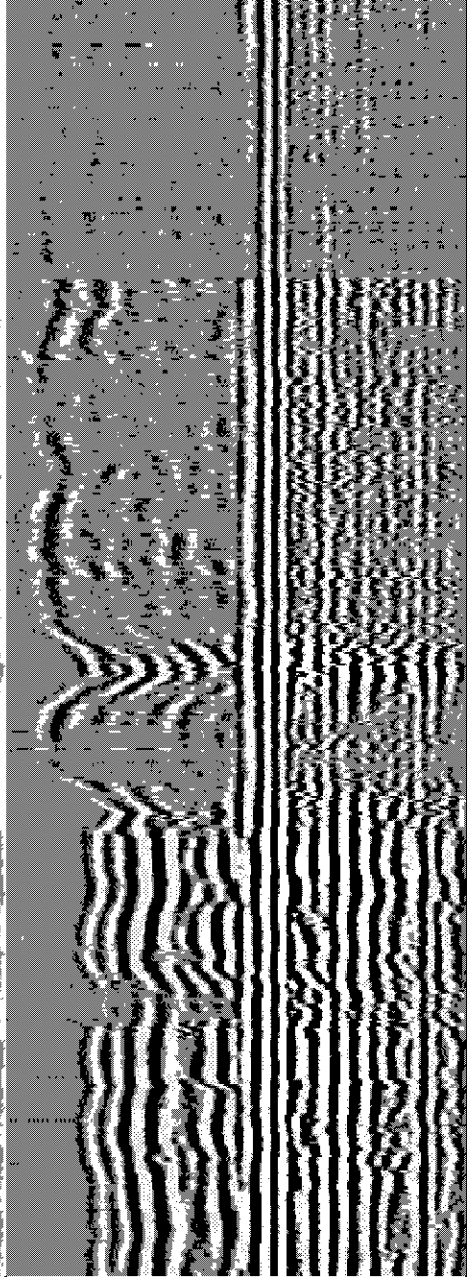
1200

350	DT (usec/ft)	50
60	SPOR (pu)	0
0	Line Speed (ft/min)	100
40	GR (GAPI)	240

ITT (msec)



500	Variable Density 5 ft	1600
0	RLL3 (Ohm-m)	50



500	Variable Density 5ft	1600
-----	----------------------	------