

Job No. 13681	Company U.S.G.S.
Well SDBP	
Field SAN DIEGO	
County SAN DIEGO	State CA
File No.	

Location:  
CITY YARD (26th ST)

Sec. \_\_\_\_\_ Twp. \_\_\_\_\_ Rge. \_\_\_\_\_

Other Services:  
GRILL3  
SONIC/MDL  
CALIPER

Permanent Datum	G.L.	Elevation above perm. datum	Elevation K.B. D.F. G.L.
Log Measured From	G.L.		
Drilling Measured From	G.L.		
Date	1-30-08		
Run Number	ONE		
Depth Driller	1498'		
Depth Logger	1244'		
Bottom Logged Interval	1243'		
Top Log Interval	35'		
Casing Driller	N/A		
Casing Logger	N/A		
Bit Size	SEE COMMENTS		
Type Fluid in Hole	BENTONITE		
Density / Viscosity	N/A		
pH / Fluid Loss	N/A		
Source of Sample	PIT		
Rm @ Meas. Temp	5.1 @ 77F		
Rmf @ Meas. Temp	5.4 @ 77F		
Rmc @ Meas. Temp	N/A		
Source of Rmf / Rmc	MEAS		
Rm @ BHT	N/A		
Time Circulation Stopped	3:00 PM		
Time Logger on Bottom	6:20 PM		
Max. Recorded Temperature	N/A		
Equipment Number	PS-2		
Location	L.A.		
Recorded By	LAPORTE		
Witnessed By	TONY		

<<< Fold Here >>>

All interpretations are opinions based on inferences from electrical or other measurements and we cannot and do not guarantee the accuracy or correctness of any interpretation, and we shall not, except in the case of gross or willful negligence on our part, be liable or responsible for any loss, costs, damages, or expenses incurred or sustained by anyone resulting from any interpretation made by any of our officers, agents or employees. These interpretations are also subject to our general terms and conditions set out in our current Price Schedule.

**Comments**

BIT SIZES:  
0-60'= 14.75"  
60-400'= 12.25"  
400-960'= 9.875"  
960-1052'= 8.5"  
1052-1498'= 7.875"

**ELOG Calibration Report**

Serial:	D1
Model:	DTQ
Shop Calibration Performed:	Tue Nov 13 14:51:32 2007
Before Survey Verification Performed:	Wed Aug 08 11:58:48 2007
After Survey Verification Performed:	Wed Aug 08 11:59:21 2007

Shop Calibration								
	Readings			References			Results	
	Zero	Cal		Zero	Cal		Gain	Offset
Short	9.295	100.881		10.200	102.200	Ohm-m	1.005	0.863
Long	10.540	100.223		10.200	102.200	Ohm-m	1.026	-17.567
IEE	129.037	4989.757	counts	0.141	5.461	A		
VSN	7.102	5538.449	counts	0.135	105.639	V		
VLN	130.222	1491.813	counts	2.484	28.455	V		

Before Survey Verification								
	Readings			References			Results	
	Zero	Cal		Zero	Cal		Gain	Offset
Short	2.141	99.805		4.899	98.795	Ohm-m	0.961	2.840
Long	275.305	106.928		106.443	106.443	Ohm-m	1.502	-54.132
IEE	169.722	5002.222	counts	0.186	5.474	A		
VSN	4.083	5609.056	counts	0.078	106.986	V		
VLN	131.241	1502.343	counts	2.503	28.655	V		

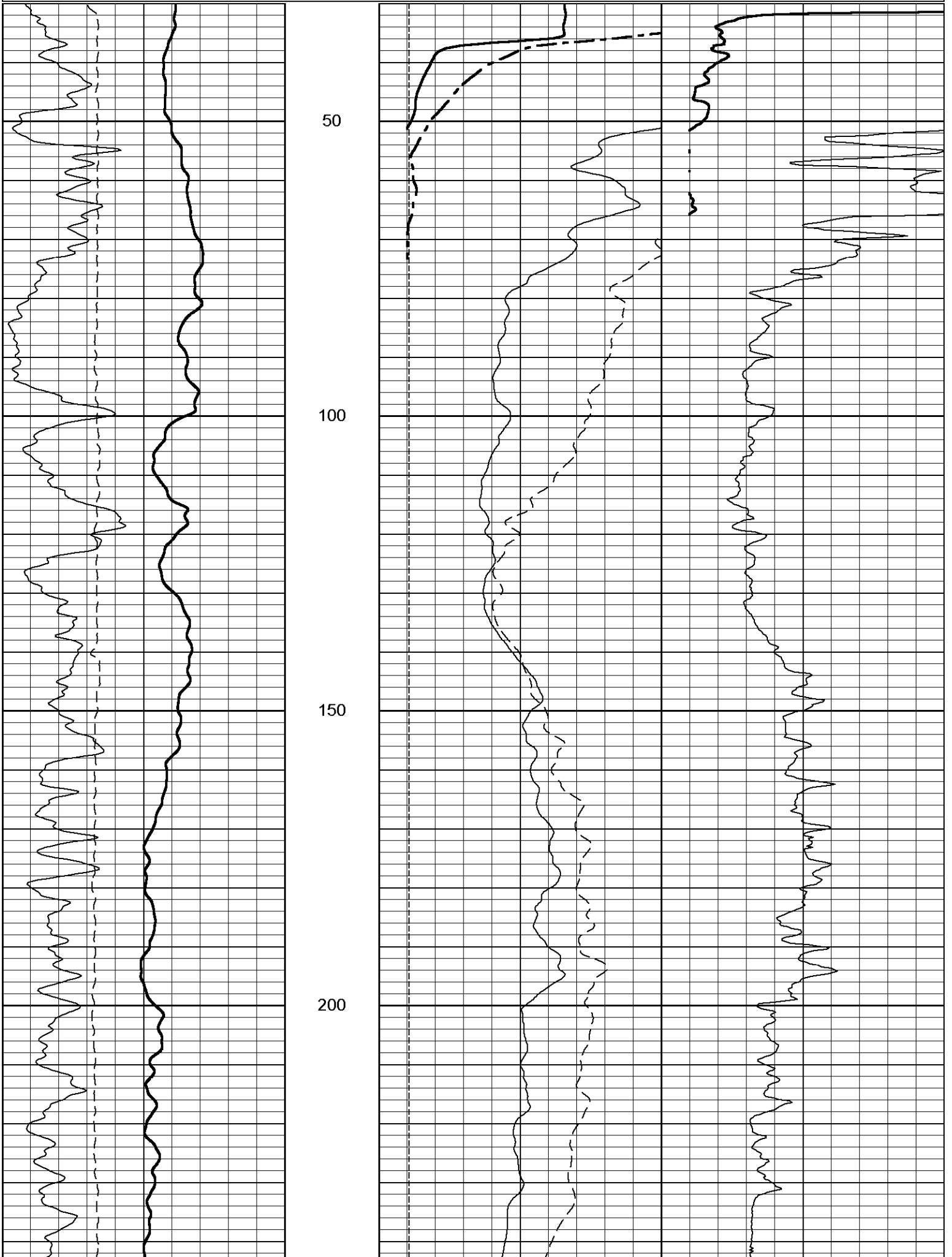
After Survey Verification								
	Readings			References			Results	
	Zero	Cal		Zero	Cal		Gain	Offset
Short	5.001	99.646		2.141	99.805	Ohm-m	1.032	-3.020
Long	331.859	109.647		106.928	106.928	Ohm-m	0.758	23.845
IEE	186.358	5012.295	counts	0.204	5.485	A		
VSN	10.472	5611.419	counts	0.200	107.031	V		
VLN	173.708	1543.657	counts	3.313	29.443	V		

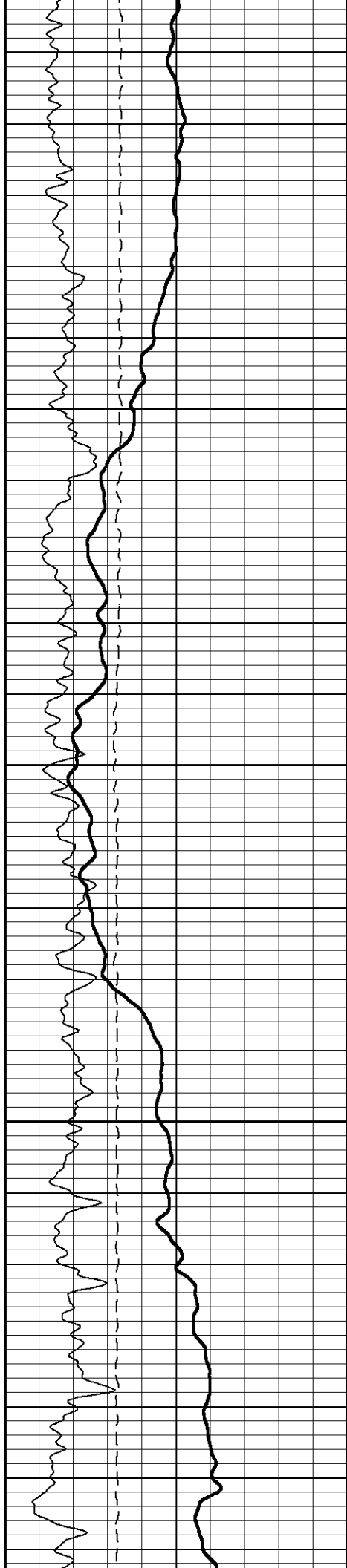
After Survey Verification compared to Before Survey Calibration								
	Zero			Cal				
	Before	After		Before	After			
Short	4.899	2.141	Ohm-m	98.795	99.805	Ohm-m		
Long	359.298	275.305	Ohm-m	106.443	106.928	Ohm-m		

Gamma Ray Calibration Report			
Serial Number:	D1		
Tool Model:	ELOG		
Performed:	Tue Nov 13 14:51:37 2007		
Calibrator Value:	162	GAPI	
Background Reading:	167.616	cps	
Calibrator Reading:	723.89	cps	
Sensitivity:	0.291222	GAPI/cps	

Database File: 13681.db  
 Dataset Pathname: USGS/SanDiego/run1/Elog  
 Presentation Format: ELOG2  
 Dataset Creation: Wed Jan 30 18:22:52 2008 by Log 6.0  
 Charted by: Depth in Feet scaled 1:240

-100	S.P. (mV)	0	0	RSN (Ohm-m)	50	0	RLL3 (Ohm-m)	50
40	Gamma Ray (GAPI)	240	0	RLN (Ohm-m)	50	50	RLL3 X10 (Ohm-m)	500
0	Line Speed (ft/min)	100	0	RMF (Ohm-m)	50			
			50	RSN X10 (Ohm-m)	500			





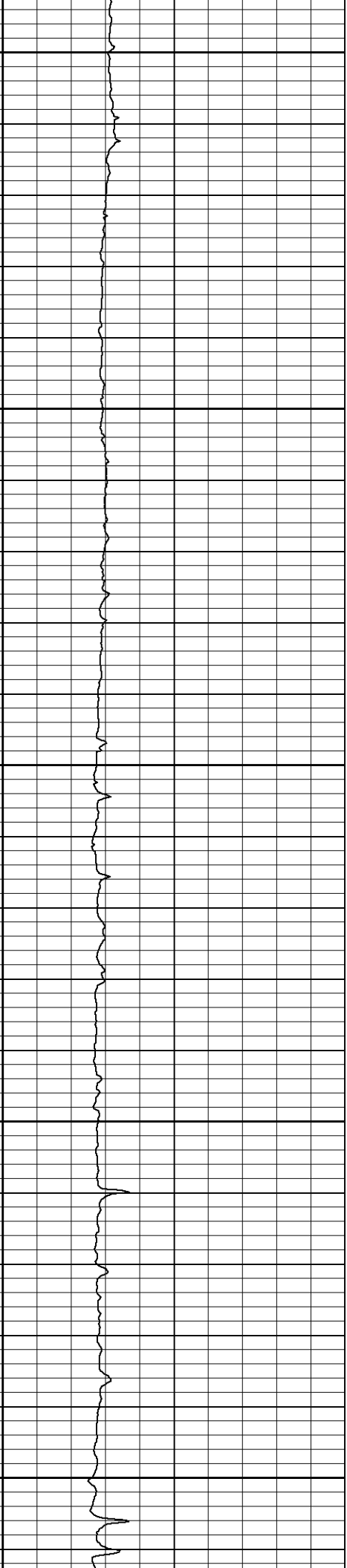
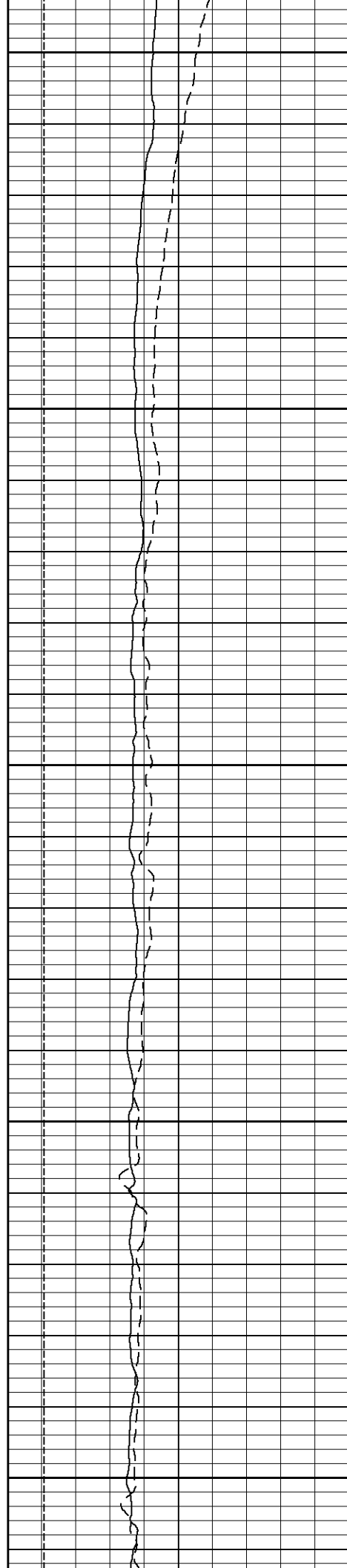
250

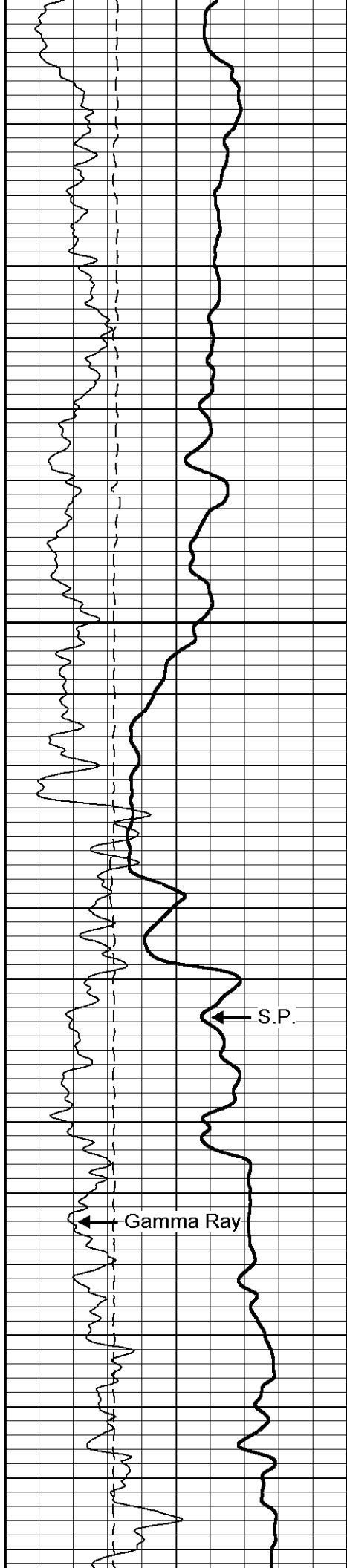
300

350

400

450





500

550

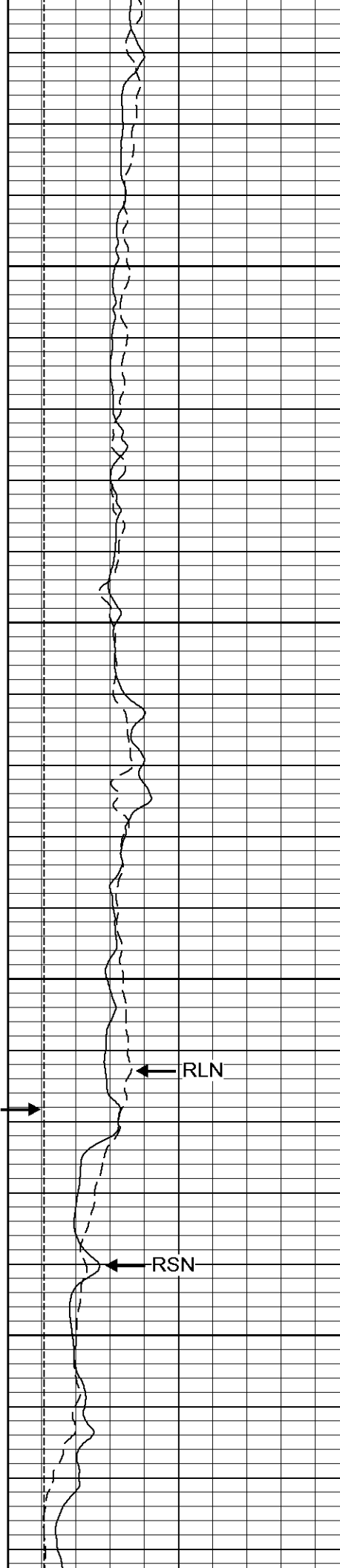
600

650

RMF

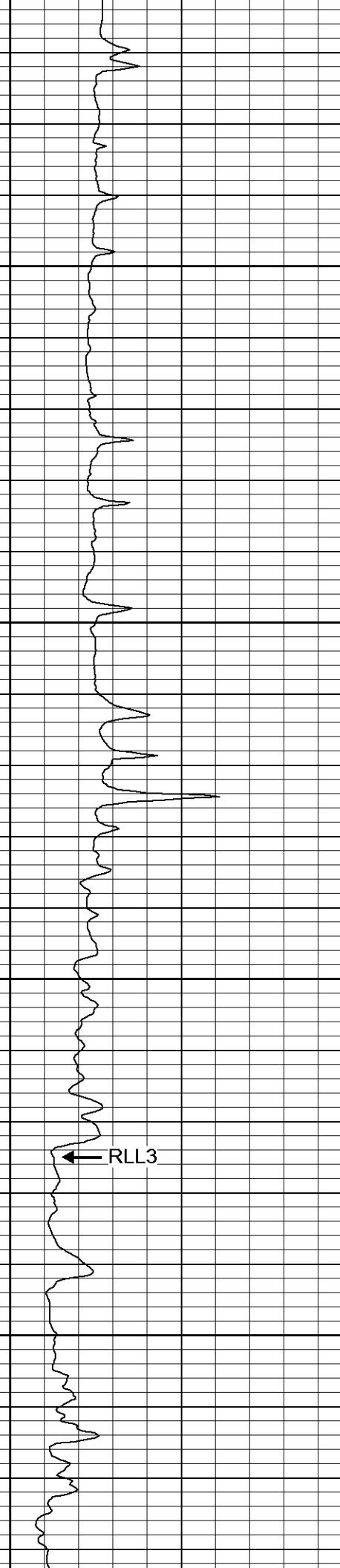
S.P.

Gamma Ray

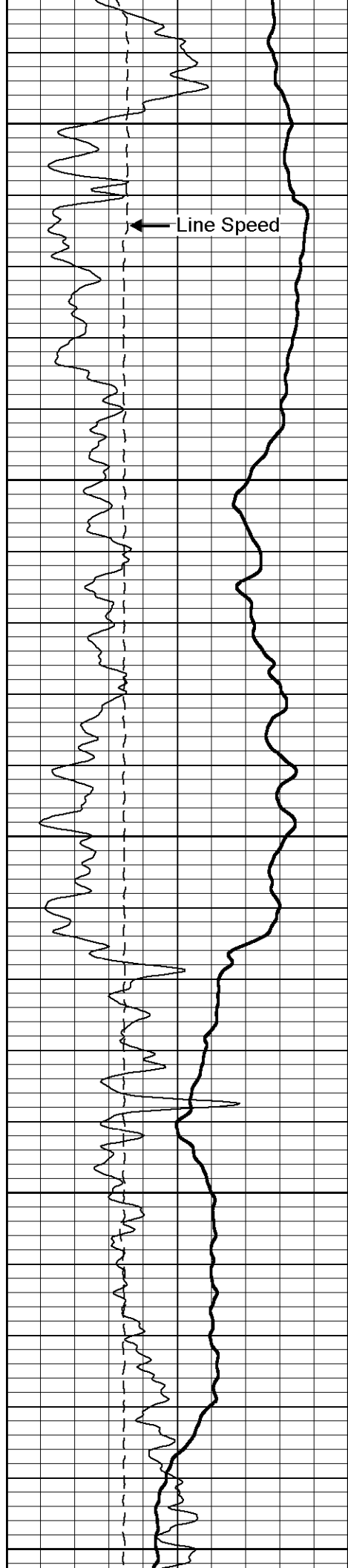


RLN

RSN



RLL3



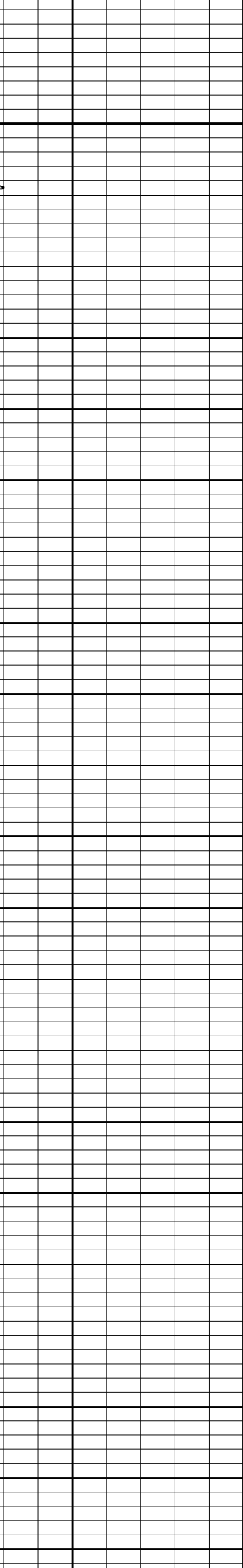
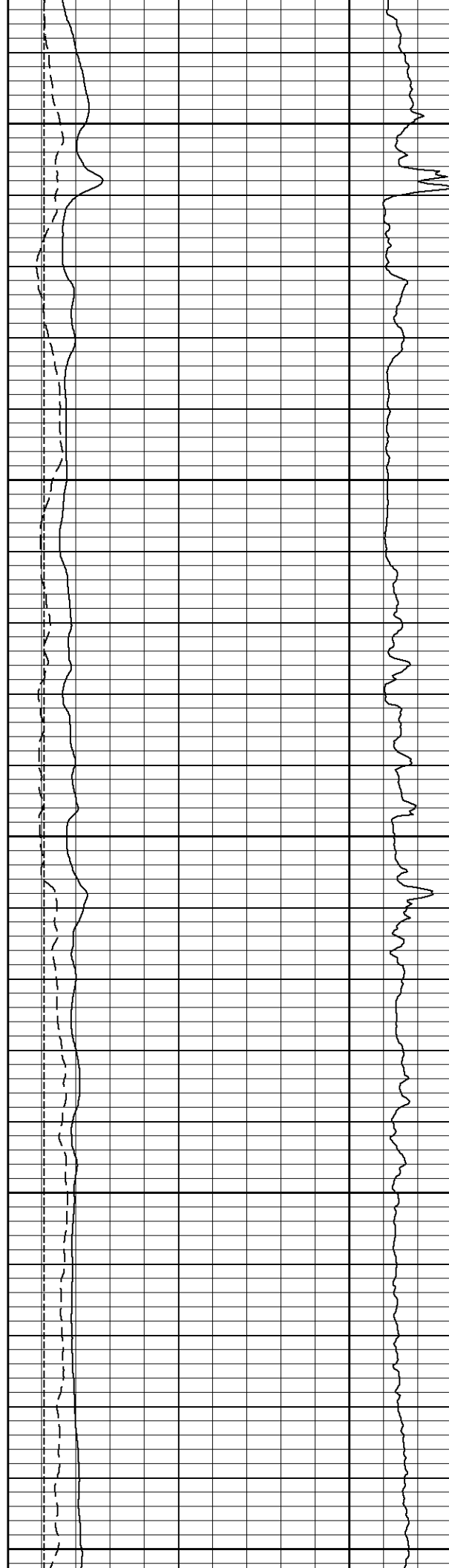
700

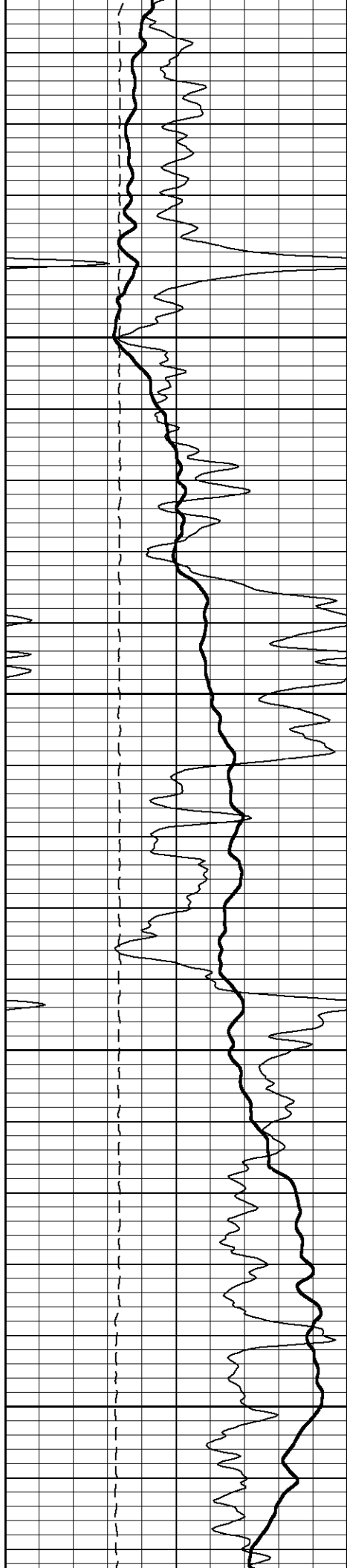
750

800

850

900



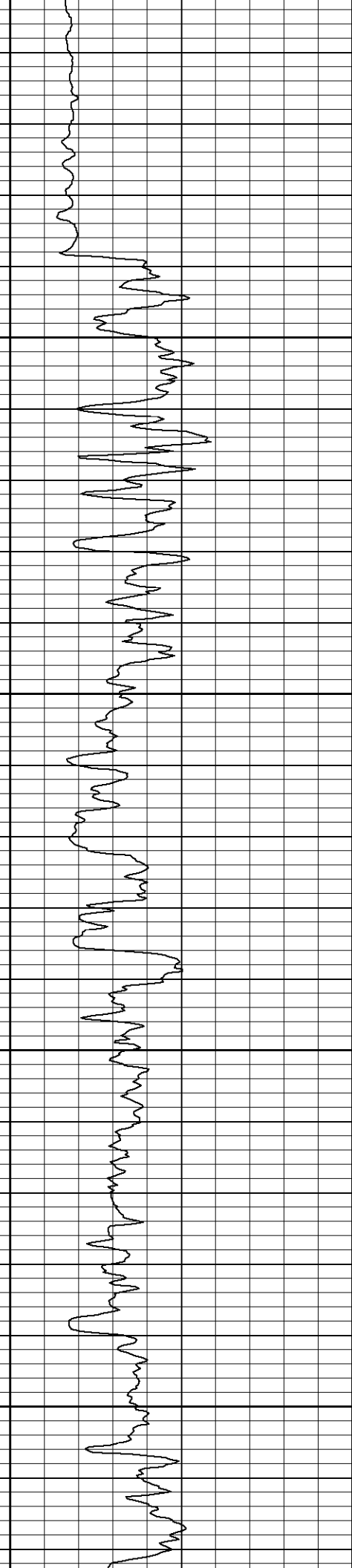
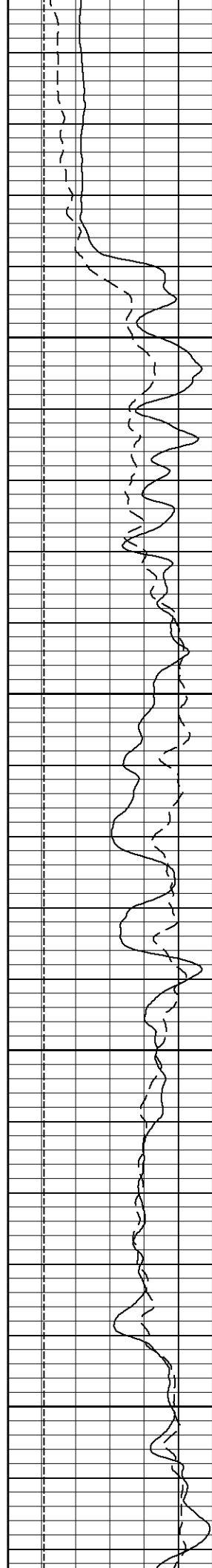


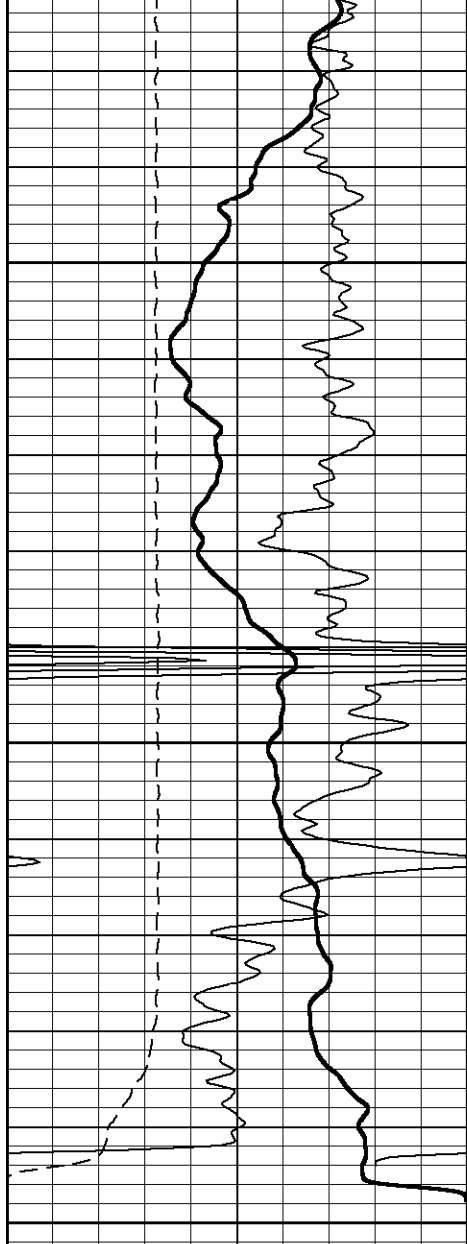
950

1000

1050

1100



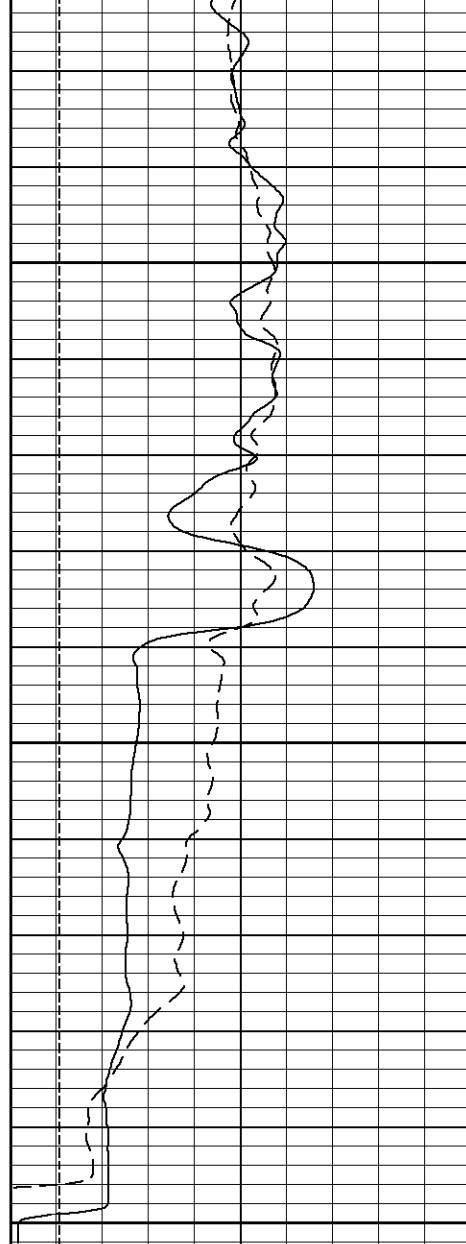


-100	S.P. (mV)	0
40	Gamma Ray (GAPI)	240
0	Line Speed (ft/min)	100

1150

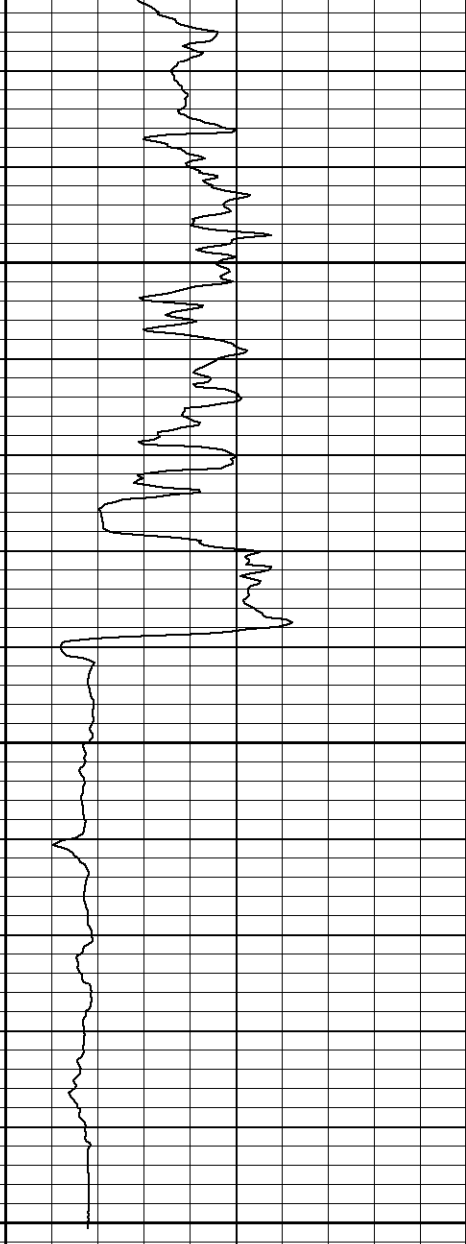
1200

1250



0	RSN (Ohm-m)	50
0	RLN (Ohm-m)	50
0	RMF (Ohm-m)	50

50	RSN X10 (Ohm-m)	500
50	RLN X10 (Ohm-m)	500



0	RLL3 (Ohm-m)	50
50	RLL3 X10 (Ohm-m)	500